

Greenleigh

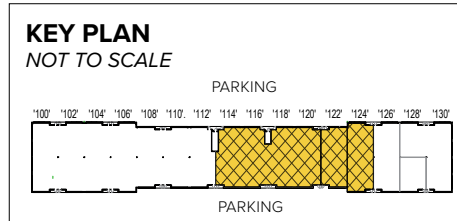
435 Williams Court | Middle River, MD 21220

Suites 114-124

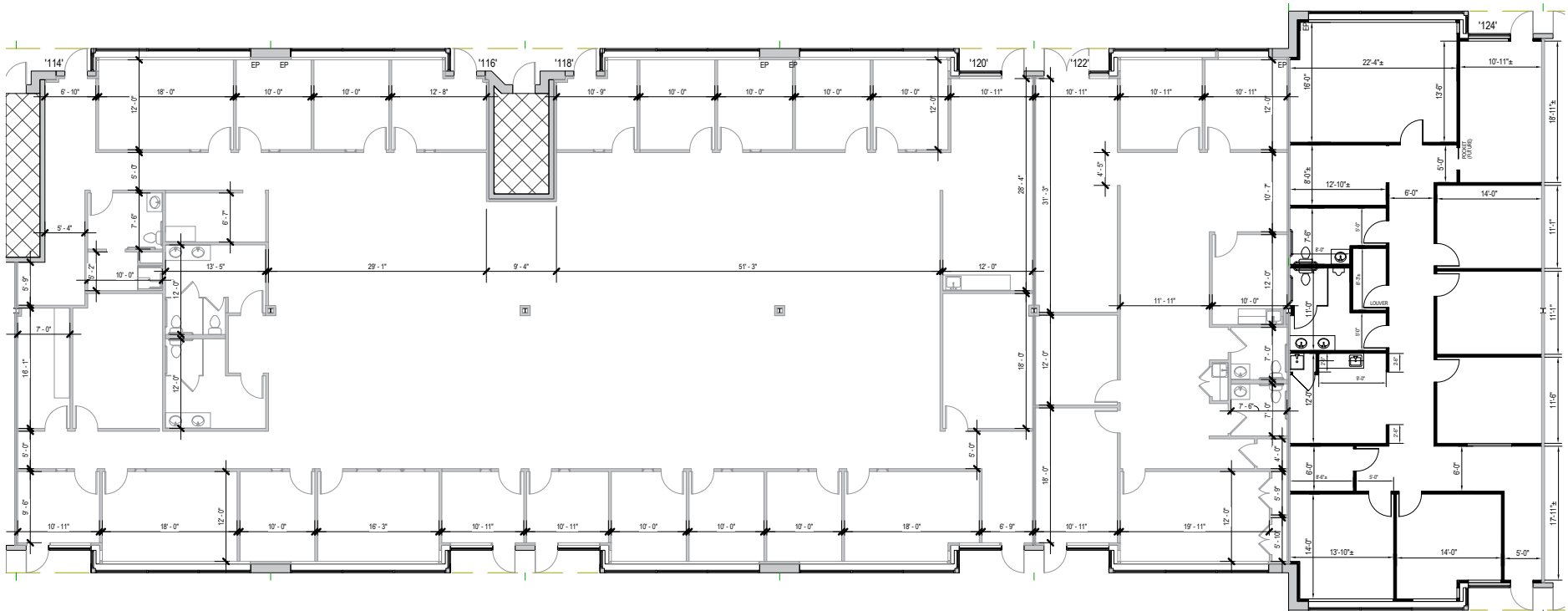


Total SF Available:
14,497 SF

*Exterior window offices with
open area in the middle*



Note: This space plan is subject to existing field conditions. This drawing is proprietary and the exclusive property of St. John Properties, Inc. Any duplications, distribution, or other unauthorized use is strictly prohibited.



PARKING



Single-Story Office

Direct-entry office space

In total Greenleigh will include 18 single-story office buildings, totaling more than 460,000 square feet of space. Tenant sizes range from 1,384 square feet to 40,800 square feet and offer businesses direct-entry 24/7 access. Green space amenities are abundant throughout the campus and include a putting green.



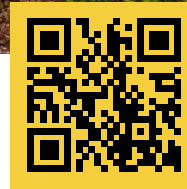
Green space amenity



Single-story office interior build-out

Single-Story Office Space

Single-Story Office Buildings		
405 Williams Court	31,280 SF	
415 Williams Court	25,045 SF	
425 Williams Court	31,280 SF	
435 Williams Court	40,800 SF	LEED SILVER
1 Stirling Street	27,540 SF	FUTURE
2 Stirling Street	20,400 SF	FUTURE
11 Stirling Street	27,540 SF	FUTURE
12 Stirling Street	20,400 SF	FUTURE
31 Stirling Street	20,400 SF	FUTURE
1 Irondale Street	22,780 SF	FUTURE
2 Irondale Street	21,760 SF	FUTURE
11 Irondale Street	20,400 SF	FUTURE
10 Irondale Street	36,040 SF	LEED GOLD
12 Irondale Street	36,040 SF	LEED GOLD
11501 Wakefield Street	16,320 SF	FUTURE
11511 Wakefield Street	16,320 SF	FUTURE
11560 Crossroads Circle	23,630 SF	LEED SILVER
11570 Crossroads Circle	25,160 SF	LEED SILVER
Single-Story Office Specifications		
LEED (select buildings)	Core & shell	
Suite Sizes	1,384 up to 40,800 SF	
Ceiling Height	10 ft. clear minimum	
Parking	5 spaces per 1,000 SF	
HVAC	Gas	
Zoning	ML-IM-M43	



Scan with your mobile device to take a virtual tour, download floor plans and more!

Contact Us

For additional leasing information or to schedule a tour, contact:

OFFICE/FLEX SPACE:

Bill Jautze

Assistant Vice President,
Leasing

bjautze@sjpi.com
410.369.1213

Matt Lenihan

Senior Vice President,
Leasing

mleihan@sjpi.com
410.369.1202

RETAIL SPACE:

Bill Holzman

Vice President, Retail Leasing

bholzman@sjpi.com
410.369.1240

Eric Llewellyn

Retail Leasing Representative

ellewellyn@sjpi.com
443.464.1308

Corporate Headquarters:

2560 Lord Baltimore Drive, Baltimore, MD 21244
410.788.0100 | SJPI.COM

About St. John Properties

St. John Properties, Inc. is one of the nation's largest and most successful privately held commercial real estate firms. Founded in 1971, the vertically-integrated company develops, owns and manages office, flex/ research and development, warehouse, retail and residential space nationwide.

Connect with us [@stjohnprop](https://twitter.com/stjohnprop)



This information contained in this publication has been obtained from sources believed to be reliable. St. John Properties makes no guarantee, warranty or representation about this information. Any projections, opinions, assumptions or estimates used here are for example only and do not represent the current or future performance of the property. Interested parties should conduct an independent investigation to determine whether the property suits their needs. REV 01/23