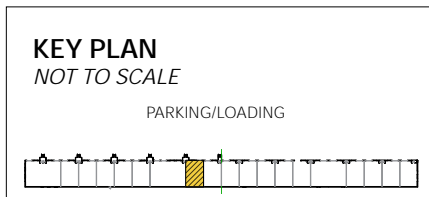


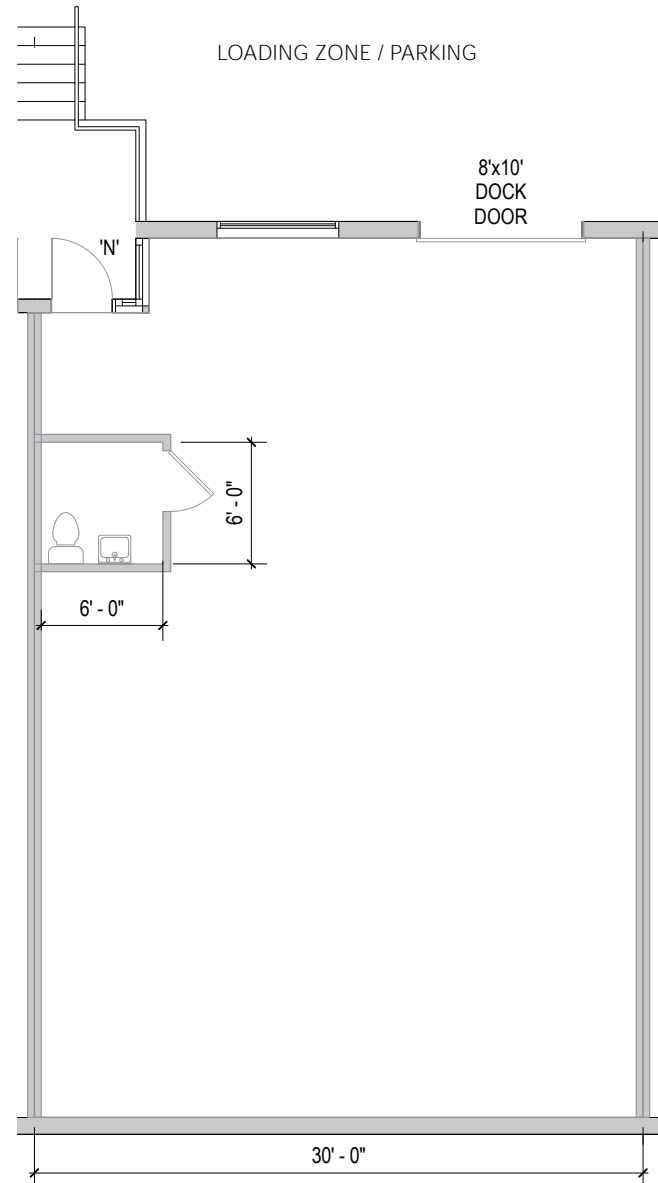


**Total SF Available:**  
1,350 SF

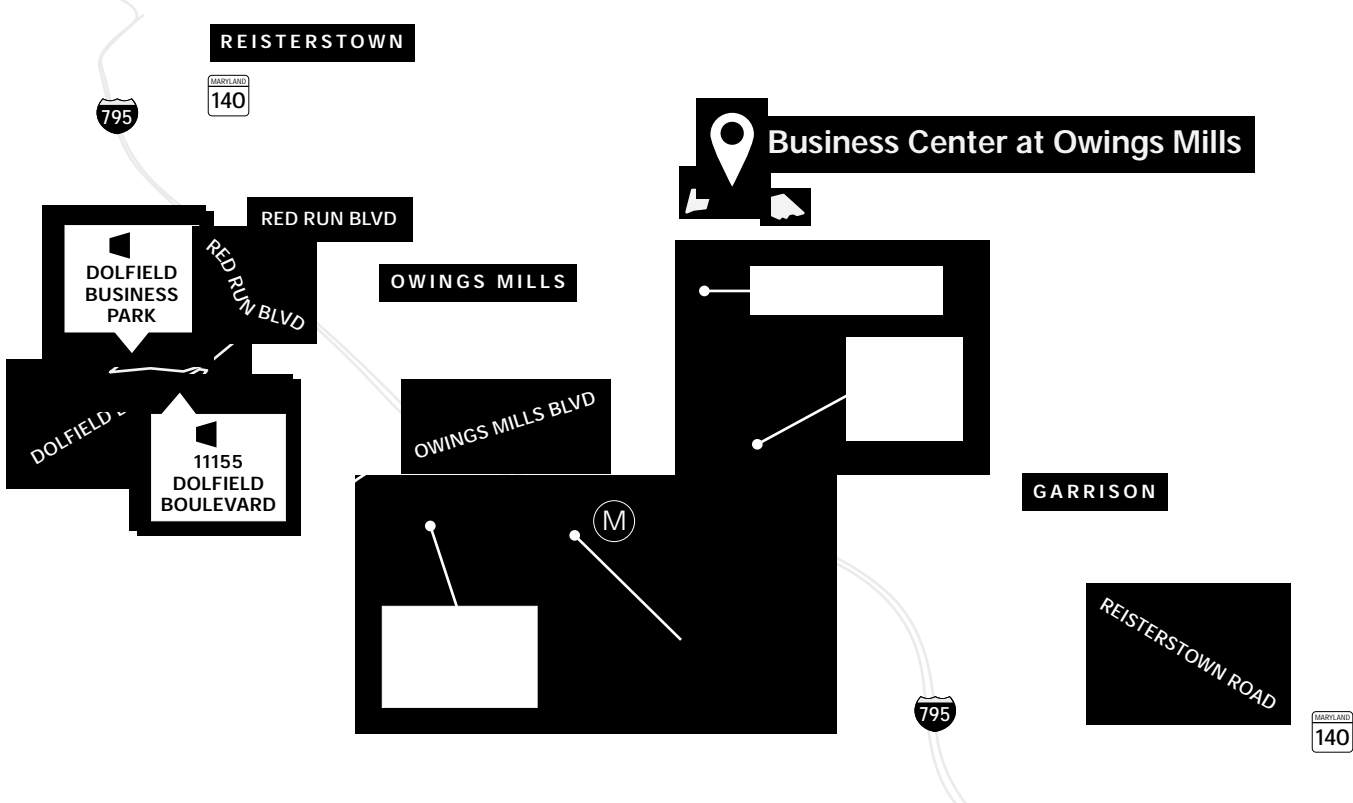
*100% small warehouse  
space with restroom, 8'x10'  
dock door*



***Note:** This space plan is subject to existing field conditions. This drawing is proprietary and the exclusive property of St. John Properties, Inc. Any duplications, distribution, or other unauthorized use is strictly prohibited.*







Imagery © 2021 Google, Imagery © 2021 Commonwealth of Virginia, Maxar Technologies, U.S. Geological Survey, USDA Farm Service Agency, Map data © 2021

**Distances to:**

Baltimore, MD (Downtown) .....	14 miles
Columbia, MD .....	18 miles
Hunt Valley, MD .....	9 miles
Interstate 70 .....	11 miles
Interstate 95 .....	15 miles
Interstate 695 (Baltimore Beltway) .....	5 miles
Mill Station/Metro Centre .....	4 miles



Scan with your mobile device to take a virtual tour, download floor plans and more!

# Contact Us

For additional leasing information or to schedule a tour, contact:

**Raphael Alterman**  
 Partner in Training  
 raltermans@sjpi.com  
 410.369.1236

**Matt Lenihan**  
 Vice President, Leasing  
 mlenihan@sjpi.com  
 410.369.1202

**Corporate Headquarters:**  
 2560 Lord Baltimore Drive  
 Baltimore, MD 21244

410.788.0100 | SJPI.COM

**About St. John Properties**

St. John Properties, Inc. is a full-service real estate company headquartered in Baltimore, Maryland. The company owns, manages and has developed more than 22 million square feet of commercial real estate, including office, ex/R&D, warehouse, retail and residential space.

Connect with us @stjohnprop



*This information contained in this publication has been obtained from sources believed to be reliable. St. John Properties makes no guarantee, warranty or representation about this information. Any projections, opinions, assumptions or estimates used here are for example only and do not represent the current or future performance of the property. Interested parties should conduct an independent investigation to determine whether the property suits their needs.*  
 REV 01/22