



410.788.0100 | SJPI.COM

### The GATE

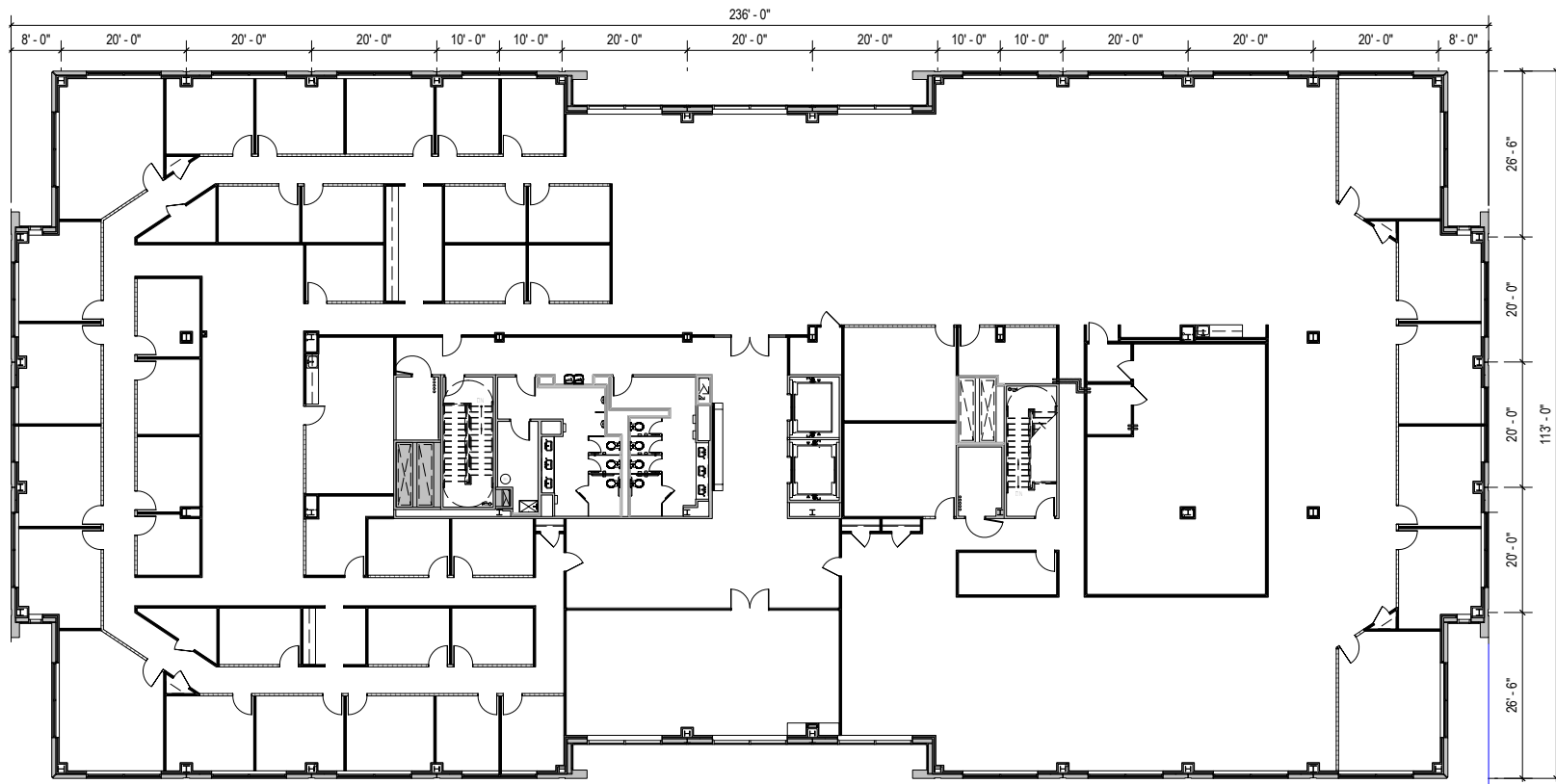
6190 Guardian Gateway | Aberdeen Proving Ground, MD 21005  
Suite 300 | Third Floor



**Total SF Available:**  
26,472 – 75,474 SF

*Full floor and/or full building opportunity*

*Note: This space plan is subject to existing field conditions. This drawing is proprietary and the exclusive property of St. John Properties, Inc. Any duplications, distribution, or other unauthorized use is strictly prohibited.*





- ▶ Seven three-story, Class 'A' office buildings
- ▶ Abundant free surface parking
- ▶ Sleek and modern Class 'A' lobbies
- ▶ Glass and brick exteriors constructed to Anti-Terrorism-Force-Protection (ATFP) Standards
- ▶ Virtually column-free construction floor-plates



**Three-Story Office Building**

6190 Guardian Gateway	75,000 SF	LEED SILVER
6200 Guardian Gateway	75,000 SF	LEED SILVER
6210 Guardian Gateway	75,000 SF	LEED SILVER
6260 Guardian Gateway	74,321 SF	LEED SILVER
6280 Guardian Gateway	74,334 SF	LEED SILVER
Three-Story Office	FUTURE	
Three-Story Office	FUTURE	

**Multi-Story Office Specifications**

LEED	Core & shell
Suite Sizes	1,252 up to 75,000 SF
Ceiling Height	10 ft. clear minimum
Offices	Built to suit
Parking	5 spaces per 1,000 SF
Exterior	ATFP
Elevator	Yes





**Scan with your mobile device to take a virtual tour, download floor plans and more!**

# Contact Us

For additional leasing information or to schedule a tour, contact:

**Matt Lenihan**  
*Senior Vice President, Leasing*  
 mlenihan@sjpi.com | 410.369.1202

**Corporate Headquarters:**  
 2560 Lord Baltimore Drive  
 Baltimore, MD 21244

**410.788.0100 | SJPI.COM**



**About St. John Properties**  
 St. John Properties, Inc. is a full-service commercial real estate firm headquartered in Baltimore, Maryland. The company has developed, constructed, and owns more than 22 million square feet of commercial real estate, including office, flex/R&D, warehouse, retail and residential space.

Connect with us @stjohnprop



*This information contained in this publication has been obtained from sources believed to be reliable. St. John Properties makes no guarantee, warranty or representation about this information. Any projections, opinions, assumptions or estimates used here are for example only and do not represent the current or future performance of the property. Interested parties should conduct an independent investigation to determine whether the property suits their needs. REV 05/22*