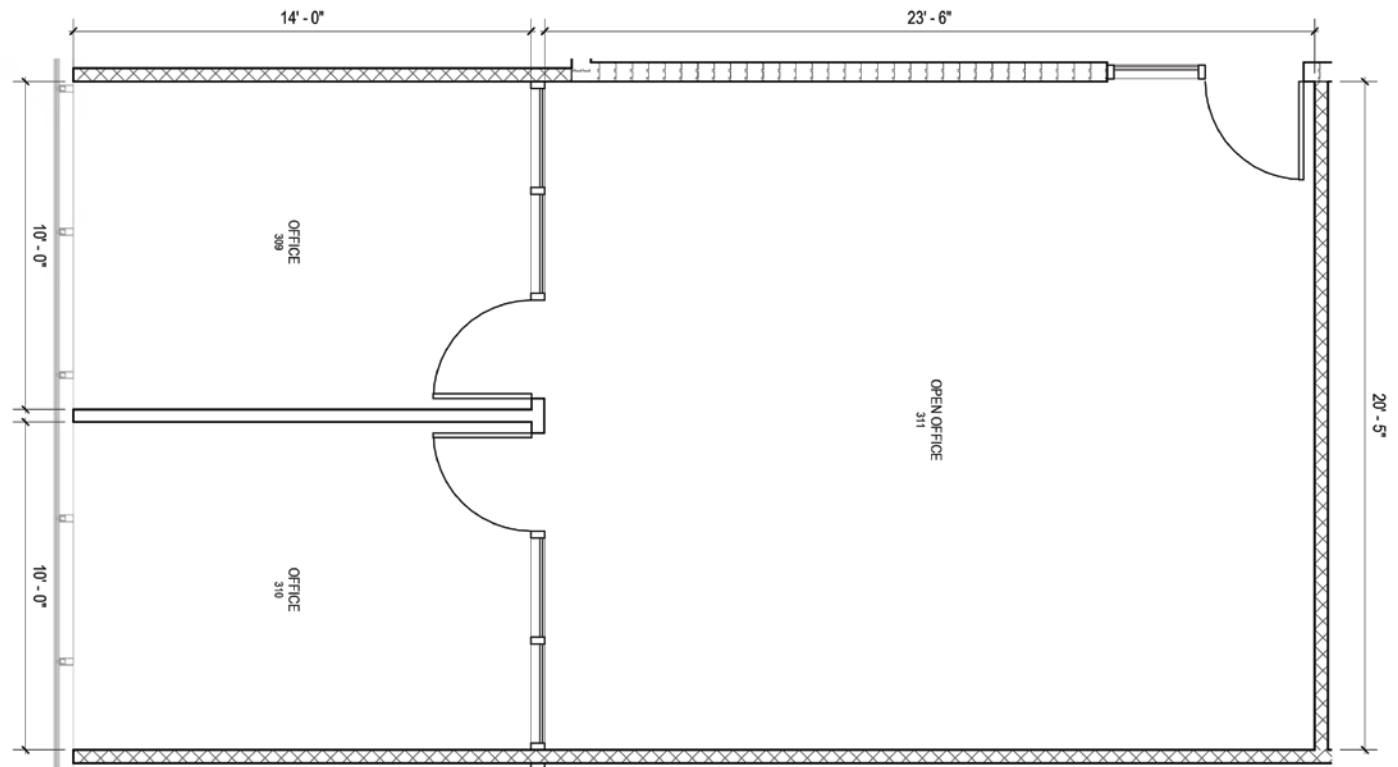
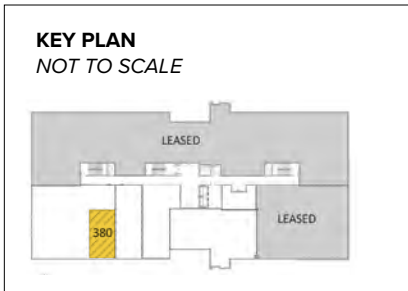


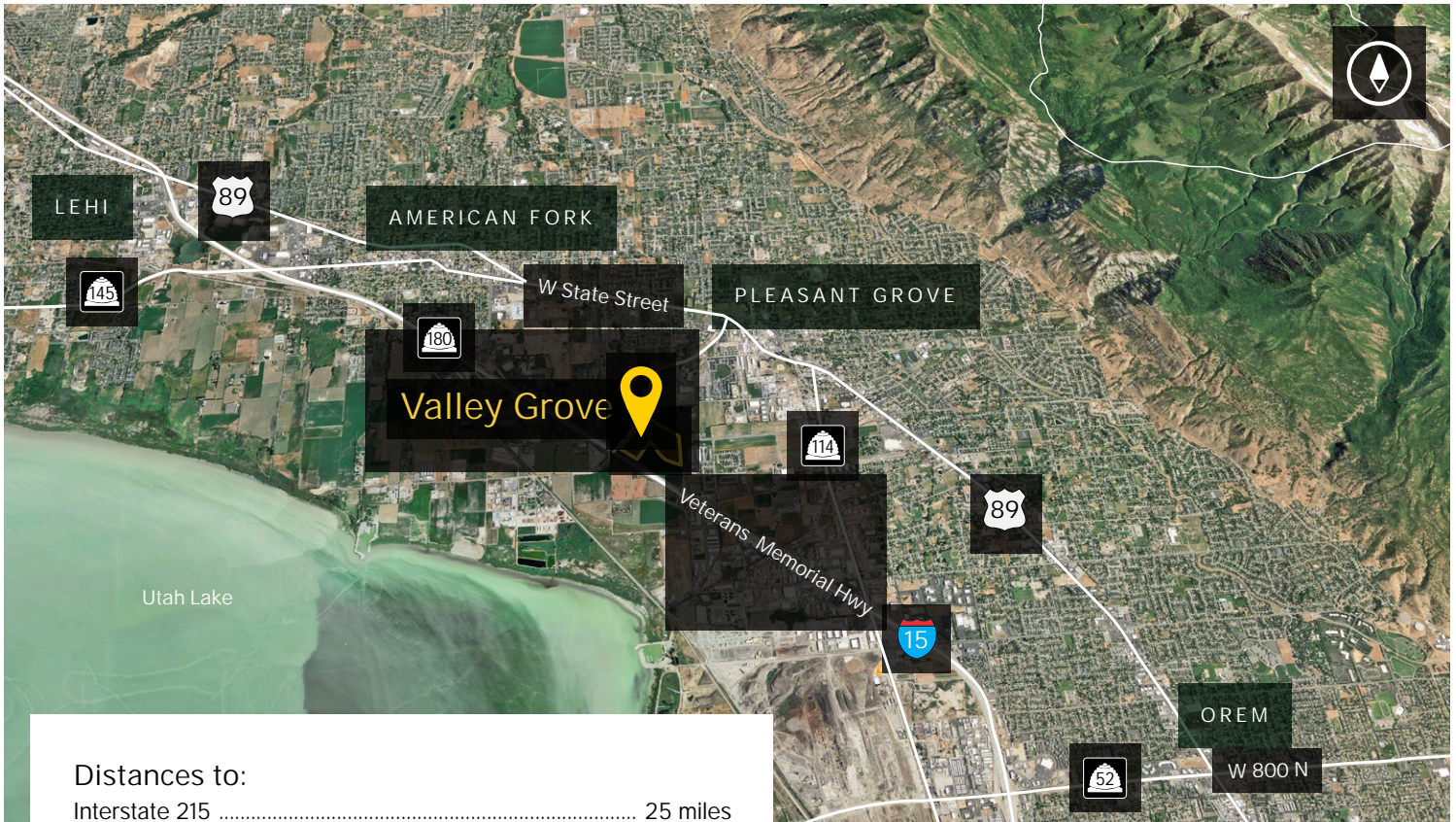


**Total SF Available:**  
960 SF



**Note:** This space plan is subject to existing field conditions. This drawing is proprietary and the exclusive property of St. John Properties, Inc. Any duplications, distribution, or other unauthorized use is strictly prohibited.





Distances to:

Interstate 215 .....	25 miles
Provo, UT .....	12 miles
Salt Lake City, UT .....	34.5 miles
Salt Lake City International Airport .....	38 miles



Scan with your mobile device to take a virtual tour, download floor plans and more!

# Contact Us

For additional leasing information or to schedule a tour, contact:

Scott Giord  
*Leasing Representative*  
 sgiord@sjpiutah.com  
 801.899.7991

Daniel Thomas  
*Regional Partner, Utah*  
 dthomas@sjpiutah.com  
 801.899.7991

Utah Office:  
 1064 S. North County Boulevard | Suite 190  
 Pleasant Grove, Utah 84062

801.899.7991 | THEVALLEYGROVE.COM



**About St. John Properties**  
 St. John Properties Utah owns and is developing more than 1.7 million square feet of commercial space across four business communities in Salt Lake, Weber, and Utah Counties.

St. John Properties, Inc. is a full-service real estate company headquartered in Baltimore, Maryland. The company owns, manages and has developed more than 22 million square feet of commercial real estate across eight states.

Connect with us @stjohnprop



*This information contained in this publication has been obtained from sources believed to be reliable. St. John Properties makes no guarantee, warranty or representation about this information. Any projections, opinions, assumptions or estimates used here are for example only and do not represent the current or future performance of the property. Interested parties should conduct an independent investigation to determine whether the property suits their needs. REV 02/22*