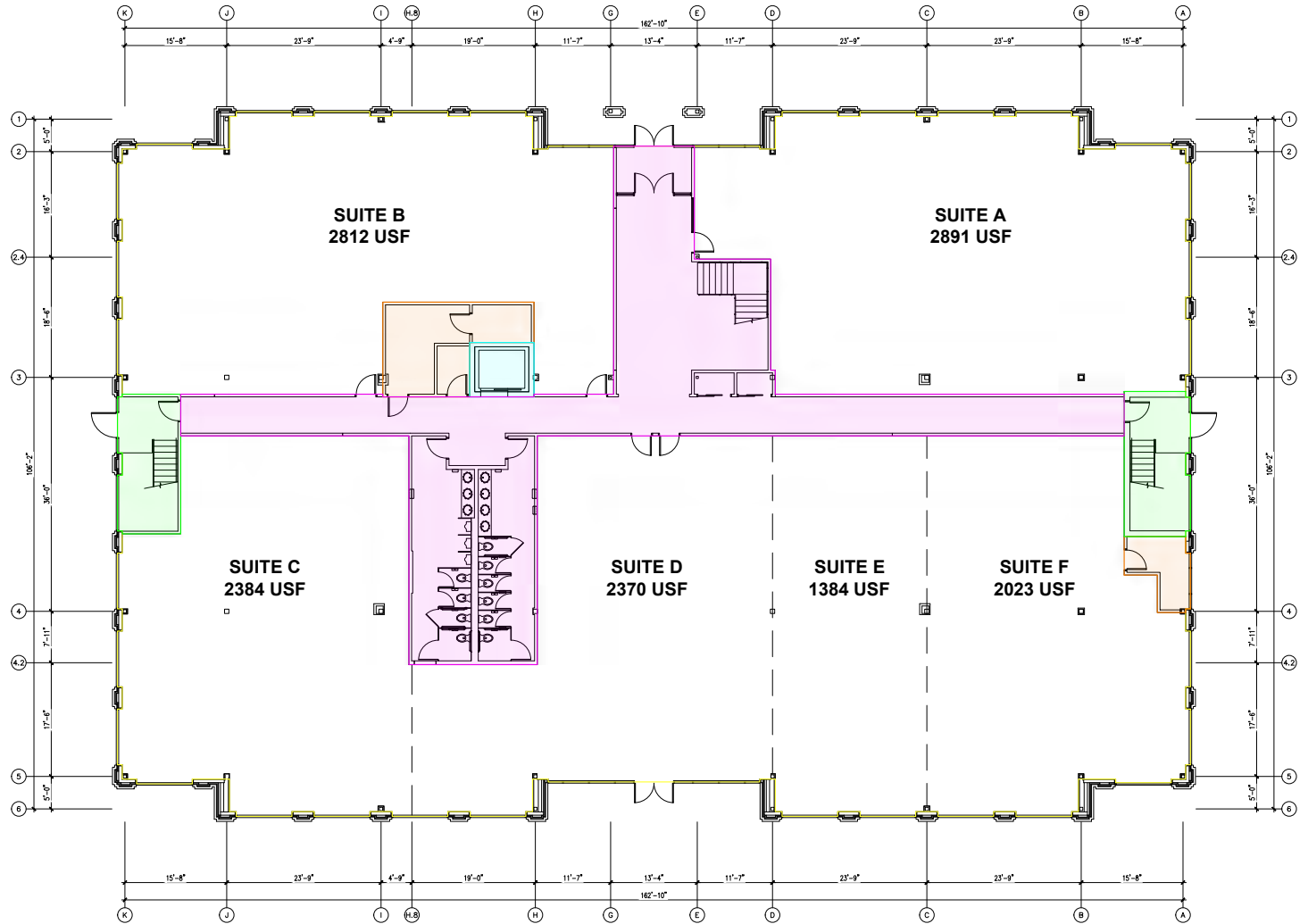




Total SF Available:
1,384 up to 13,864 SF

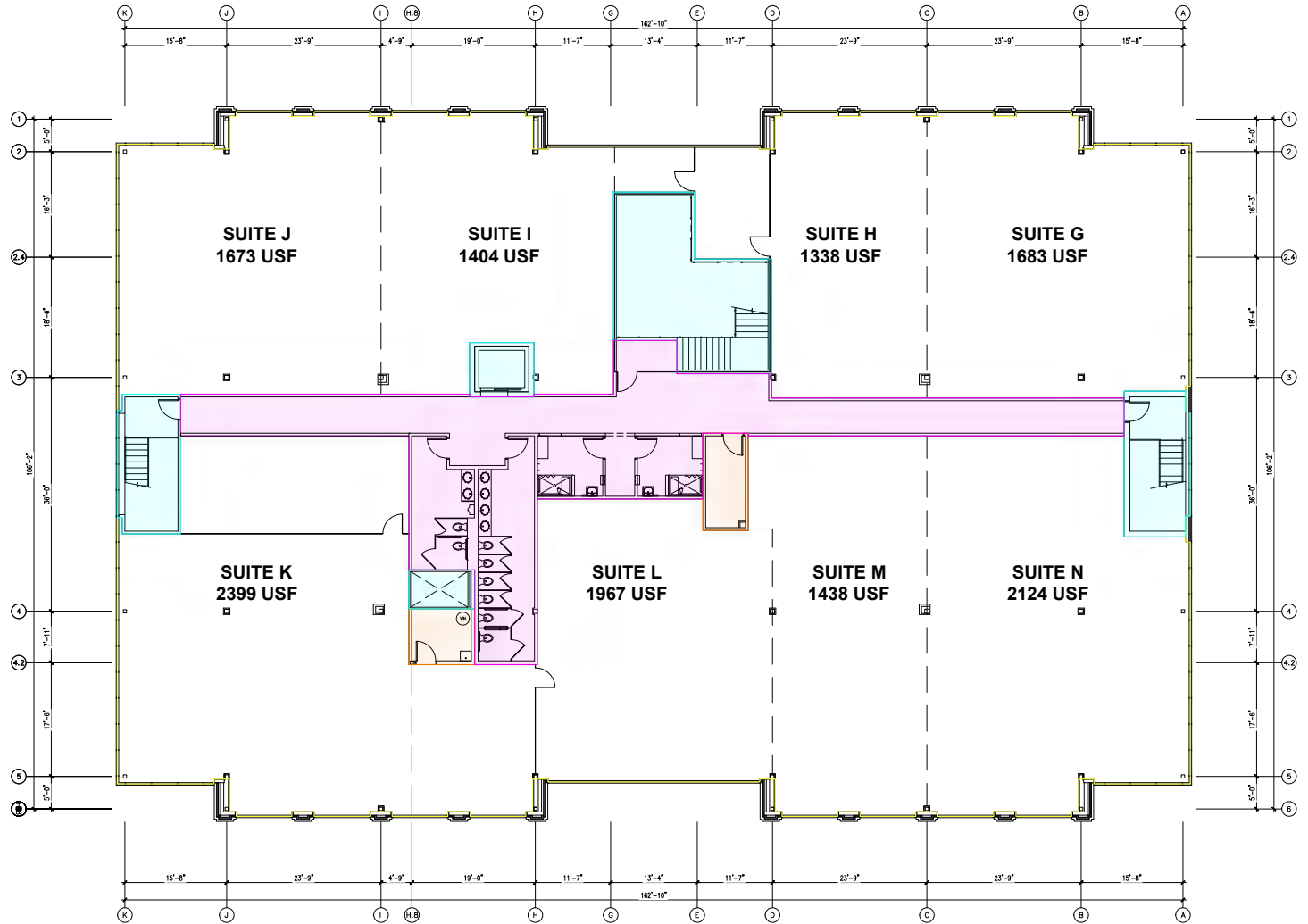
Note: This space plan is subject to existing field conditions. This drawing is proprietary and the exclusive property of St. John Properties, Inc. Any duplications, distribution, or other unauthorized use is strictly prohibited.





Total SF Available:
1,338 up to 14,026 SF

Note: This space plan is subject to existing field conditions. This drawing is proprietary and the exclusive property of St. John Properties, Inc. Any duplications, distribution, or other unauthorized use is strictly prohibited.





Interior Renovations Now Underway

Mequon Research Center III

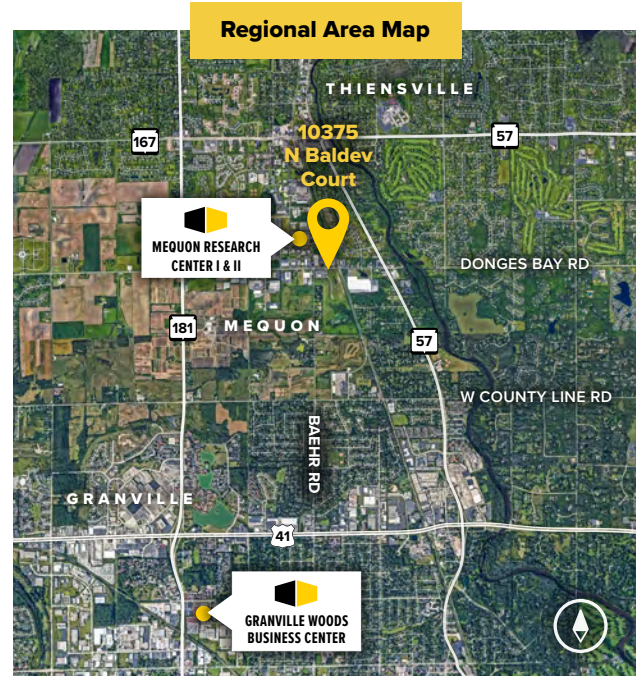
10375 N Baldev Court
Mequon, WI 53092

About the Property

- ▶ Two-story atrium lobby
- ▶ Monument signage
- ▶ Raised IT room flooring
- ▶ On-site UPS system
- ▶ Expansive glass lines

Class 'B' Office Building

10375 N Baldev Court	35,654 SF
Building Specifications	
Suite Sizes	Up to 35,654 SF
Ceiling Height	9.6 ft. clear minimum
Parking	5.8 spaces per 1,000 SF
Zoning	B-5





MONUMENT SIGN

10375
N Baldev Court
35,654 SF

N BAHR ROAD

N BALDEV COURT

W DONGES BAY ROAD

Google Imagery ©2021 Commonwealth of Virginia, Maxar Technologies, U.S. Geological Survey, USDA, Farm Service Agency, Map data ©2022

For more information on Mequon Research Center III, visit: sjpi.com/mequon3



Contact Us

For additional leasing information or to schedule a tour, contact:

Greg Fax
Regional Partner, Wisconsin
gfx@sjpi.com | 262.524.0100

Wisconsin Regional Office:
2000 Pewaukee Road | Suite A
Waukesha, WI 53188

262.524.0100 | SJPI.COM/WISCONSIN



This information contained in this publication has been obtained from sources believed to be reliable. St. John Properties makes no guarantee, warranty or representation about this information. Any projections, opinions, assumptions or estimates used here are for example only and do not represent the current or future performance of the property. Interested parties should conduct an independent investigation to determine whether the property suits their needs. REV 06/22

About St. John Properties

St. John Properties Wisconsin owns and is developing more than 1.7 million square feet of commercial space across 17 business communities in Wisconsin.

St. John Properties, Inc. is a full-service real estate company headquartered in Baltimore, Maryland. The company owns, manages and has developed more than 22 million square feet of commercial real estate nationwide.

Connect with us @[stjohnprop](https://twitter.com/stjohnprop)

