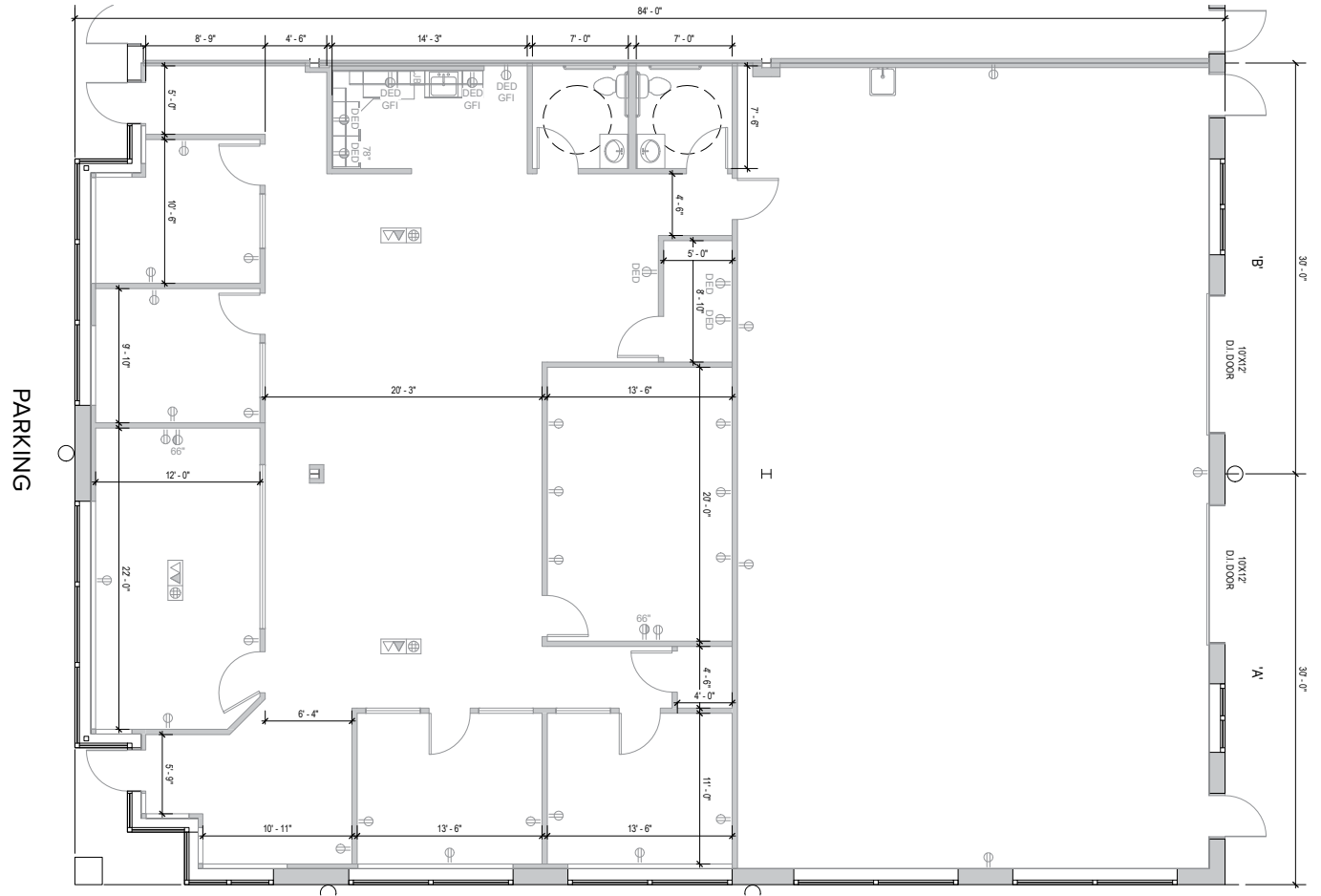
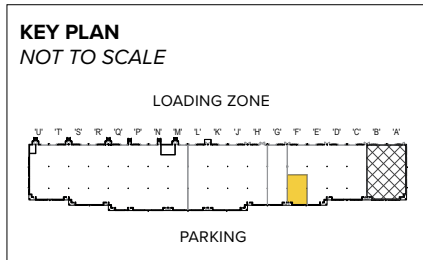




Total SF Available:
5,088 SF

End unit with 2,688 sq. ft. of office with conference, training room, open areas, private offices, conditioned warehouse space with 10'x12' drive-in doors (2)



Note: This space plan is subject to existing field conditions. This drawing is proprietary and the exclusive property of St. John Properties, Inc. Any duplications, distribution, or other unauthorized use is strictly prohibited.



Rivertech Court at Discovery District

Set in the 150-acre Discovery District at the University of Maryland, Rivertech Court's three flex/R&D buildings are comprised of over 159,000 square feet of space. Each building offers dock and drive-in loading capabilities, 16 foot clear minimum ceiling heights, free parking and data connectivity to ISP providers via fiber backbone.

For more information on Rivertech Court at the Discovery District, visit: sjpi.com/rivertechcourt



Erco Memorial Park

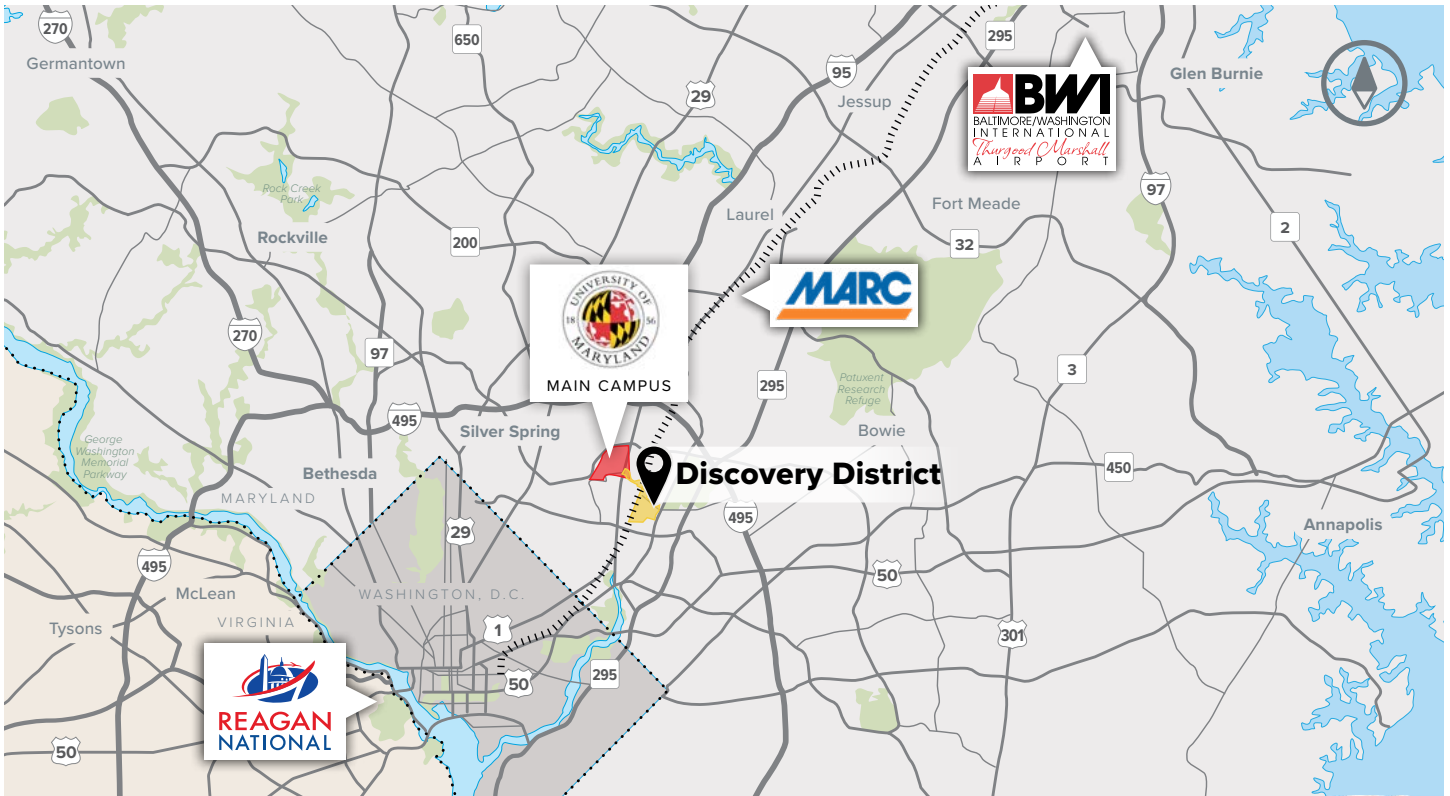
Flex/R&D Buildings

5600 Rivertech Court	52,680 SF	LEED GOLD
5650 Rivertech Court	57,120 SF	LEED GOLD
5751 Rivertech Court	50,107 SF	LEED GOLD

Flex/R&D Specifications

LEED	Gold Core & shell
Suite Sizes	2,520 up to 57,120 SF
Ceiling Height	16 ft. clear minimum
Offices	Build to suit
Parking	4 spaces per 1,000 SF
Exterior Walls	Brick on block
Roof	TPO
Loading	Dock or drive-in





Distances to:

College Park Airport	1 mile
Baltimore, MD (Downtown)	35 miles
BWI Airport	24 miles
UMD College Park Main Campus	1 mile
Interstate 95	7.5 miles
Interstate 495 (Capital Beltway)	3.5 miles
Interstate 695 (Baltimore Beltway)	25 miles
MD 295	4 miles
Metro/MARC	1 mile
Washington, D.C. (Downtown)	11 miles



Scan with your mobile device to take a virtual tour, download floor plans and more!

Contact Us

For additional leasing information or to schedule a tour, contact:

Claire Cobert

Leasing Representative

ccobert@sjpi.com | 410.369.1274

Corporate Headquarters:

2560 Lord Baltimore Drive | Baltimore, MD 21244

410.788.0100 | SJPI.COM

About St. John Properties

St. John Properties, Inc. is a full-service real estate company headquartered in Baltimore, Maryland. The company owns, manages and has developed more than 22 million square feet of commercial real estate, including office, flex/R&D, warehouse, retail and residential space.

Connect with us @stjohnprop



This information contained in this publication has been obtained from sources believed to be reliable. St. John Properties makes no guarantee, warranty or representation about this information. Any projections, opinions, assumptions or estimates used here are for example only and do not represent the current or future performance of the property. Interested parties should conduct an independent investigation to determine whether the property suits their needs. REV 11/22