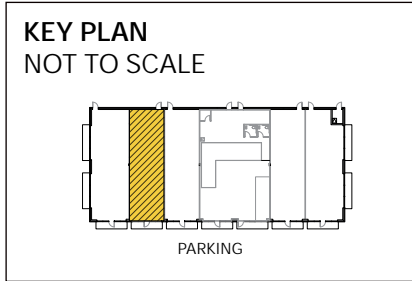


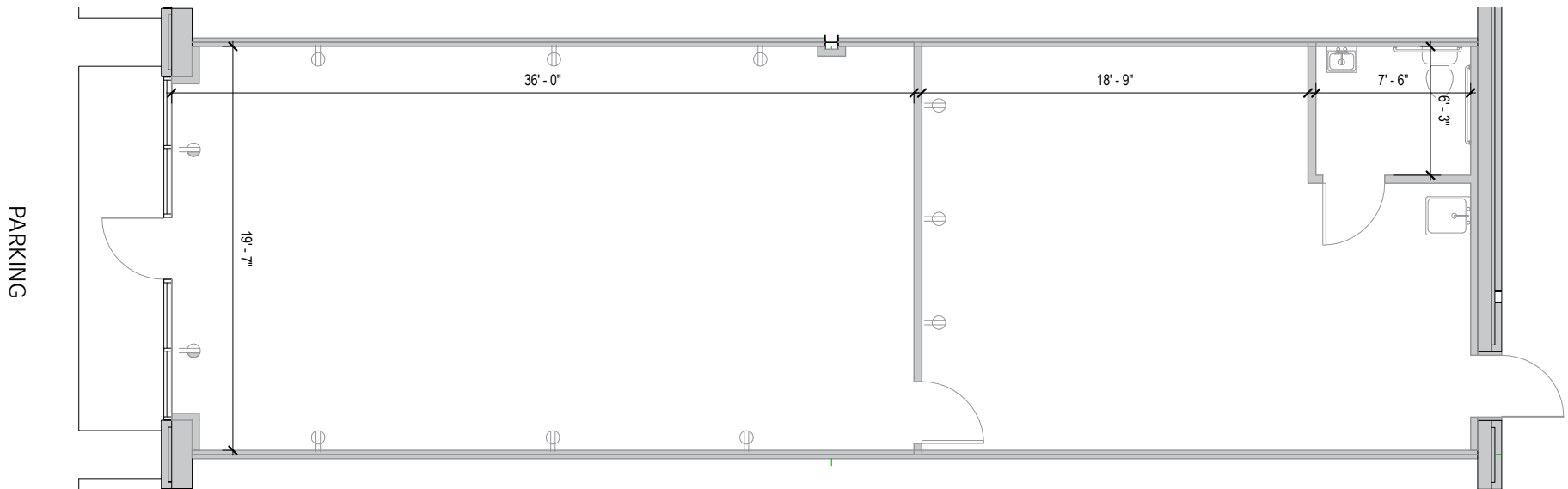
WINDSOR OFFICE PARK
2835 Rolling Road | Windsor Mill, MD 21244
Suite 102

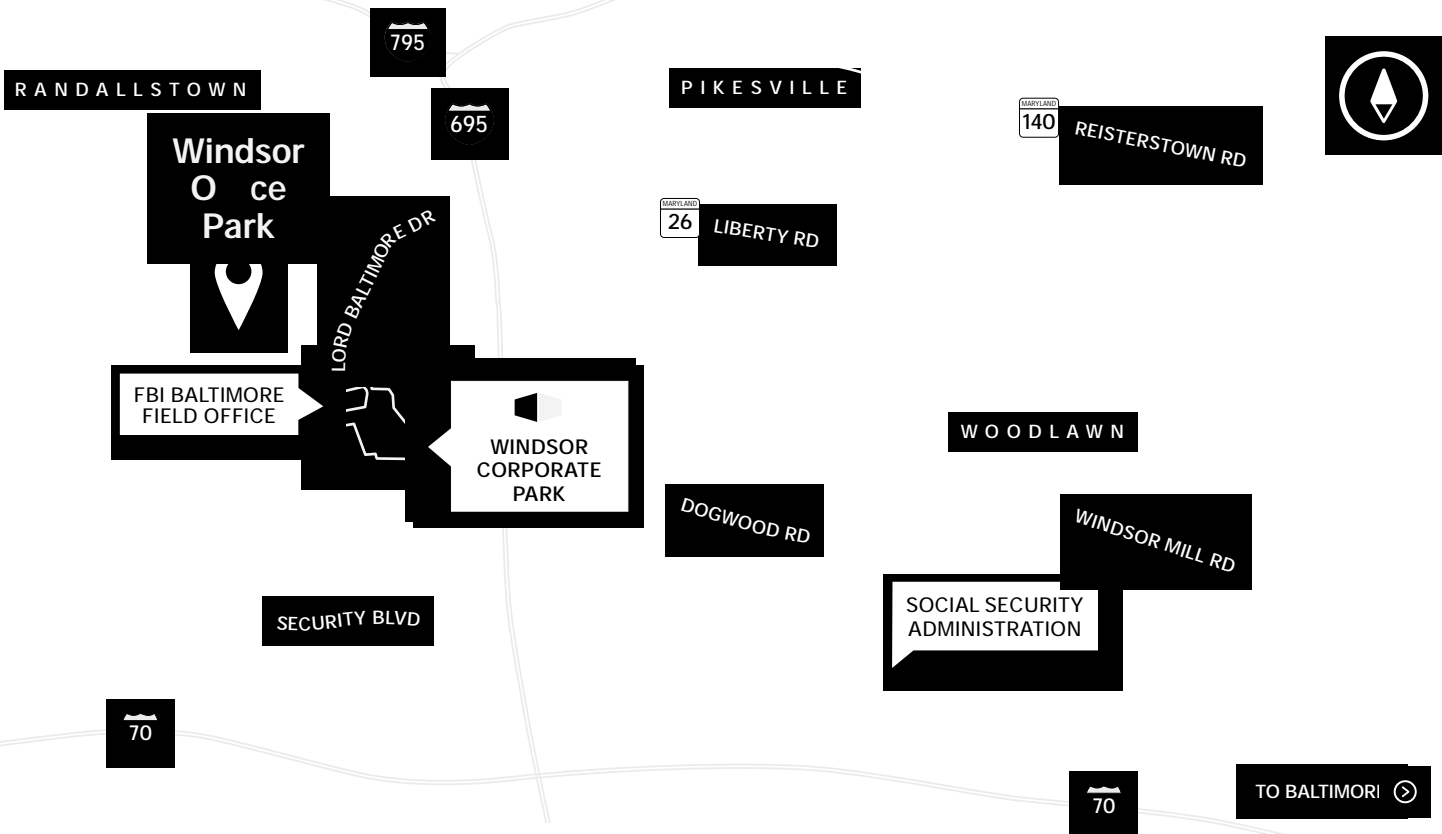


TOTAL SF AVAILABLE:
1,311 SF

Former cell phone store

Note: This space plan is subject to existing field conditions. This drawing is proprietary and the exclusive property of St. John Properties, Inc. Any duplications, distribution, or other unauthorized use is strictly prohibited.





Distances to:

Baltimore, MD (Downtown)	9 miles
BWI Airport	11 miles
Columbia, MD	10 miles
Interstate 70	4 miles
Interstate 83	9 miles
Interstate 95	7 miles
Interstate 695 (Baltimore Beltway)	2 miles
Interstate 95	3 miles
Owings Mills, MD	5 miles
Towson, MD	8 miles



Scan with your mobile device to take a virtual tour, download floor plans and more!

Contact Us

For additional leasing information or to schedule a tour, contact:

Claire Cobert
 Leasing Representative
 ccobert@sjpi.com
 410.369.1274

Matt Lenihan
 Vice President, Leasing
 mlenihan@sjpi.com
 410.369.1202

Corporate Headquarters:
 2560 Lord Baltimore Drive | Baltimore, MD 21244
 410.788.0100 | SJPI.COM

About St. John Properties

St. John Properties, Inc. is a full-service real estate company headquartered in Baltimore, Maryland. The company owns, manages and has developed more than 22 million square feet of commercial real estate, including office, ex/R&D, warehouse, retail and residential space.

Connect with us @stjohnprop



This information contained in this publication has been obtained from sources believed to be reliable. St. John Properties makes no guarantee, warranty or representation about this information. Any projections, opinions, assumptions or estimates used here are for example only and do not represent the current or future performance of the property. Interested parties should conduct an independent investigation to determine whether the property suits their needs. REV 01/22