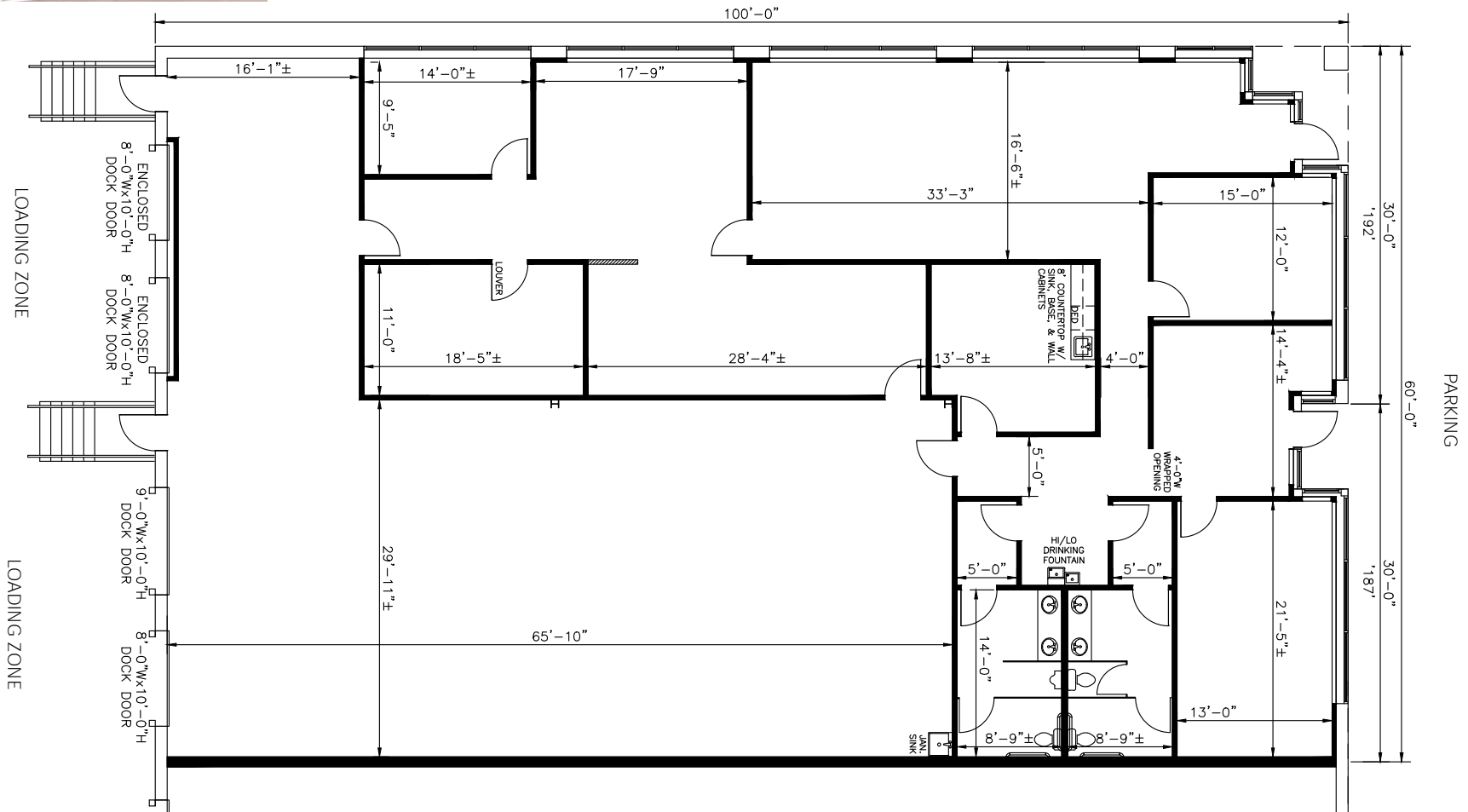


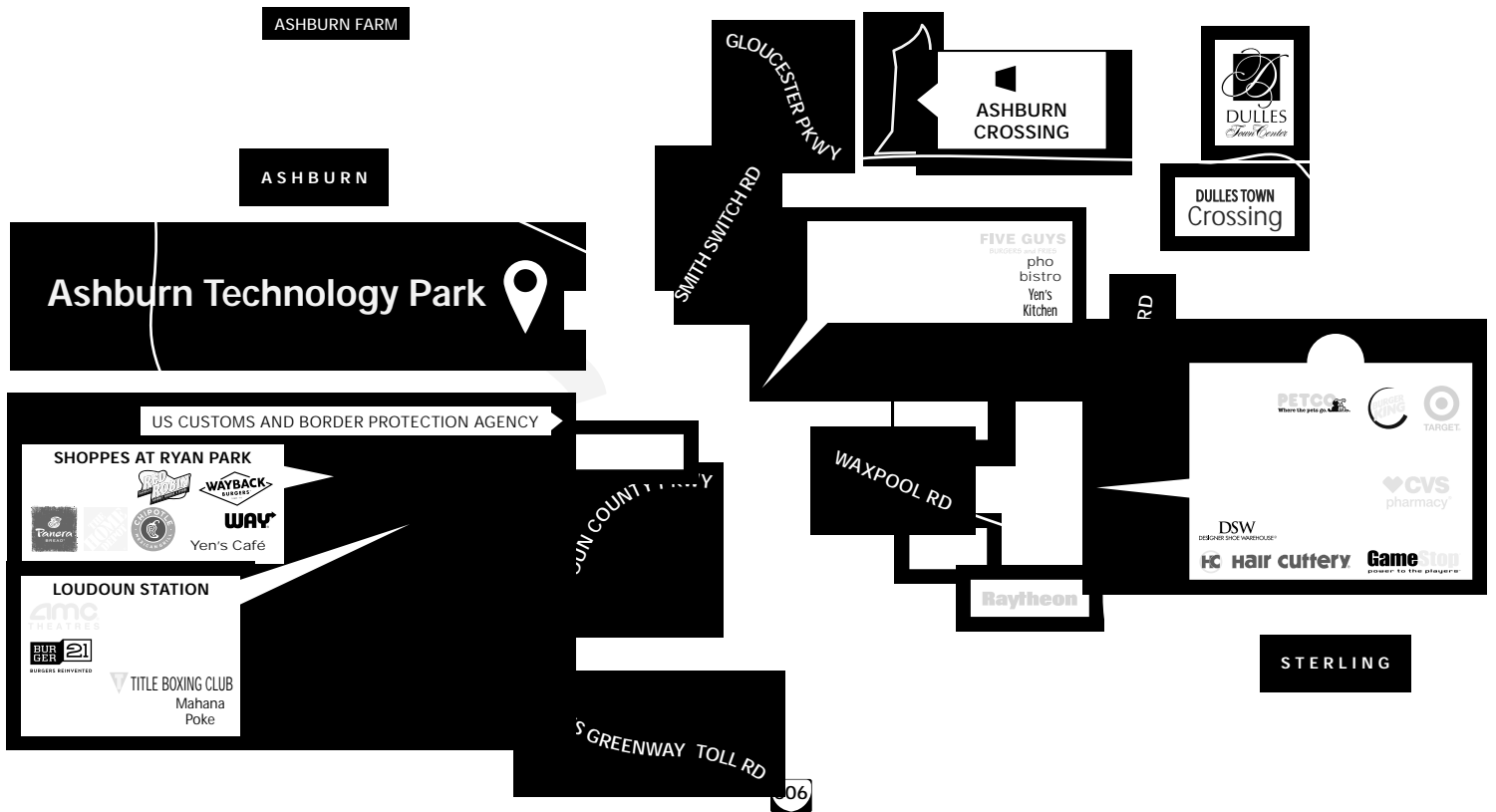


Total SF Available:
6,000 SF

3,444 sq. ft. office, 2556 sq. ft. warehouse
with 2 dock doors



Note: This space plan is subject to existing field conditions. This drawing is proprietary and the exclusive property of St. John Properties, Inc. Any duplications, distribution, or other unauthorized use is strictly prohibited.



Distances to:

- Dulles International Airport 5 miles
- Loudoun Metro Station 1 mile
- Leesburg, VA 6 miles
- Reston, VA 9 miles
- Tysons Corner 13 miles
- VA Route 7 1 mile
- VA Route 28 0.5 miles
- VA Route 267 (Dulles Greenway) 3 miles
- Washington, D.C. 25 miles

Contact Us

For additional leasing information or to schedule a tour, contact:

Danny Foit
Leasing Representative
 dfoit@sjpi.com
 703.858.9215

Matt Holbrook
Regional Partner, Virginia & Central Maryland
 mholbrook@sjpi.com
 703.858.9215

Virginia Regional Office:
 21750 Red Rum Drive | Suite 182 | Ashburn, Virginia 20147
703.858.9215 | SJPI.COM/VIRGINIA



Scan with your mobile device to take a virtual tour, download our plans and more!

About St. John Properties

St. John Properties Virginia and Central Maryland regional office has developed and owns more than 4.1 million square feet of commercial space in Frederick County, Maryland as well as Loudoun and Prince William Counties in Virginia.

St. John Properties, Inc. is a full-service real estate company that owns, manages and has developed more than 22 million square feet of commercial real estate, including office, R&D, warehouse, retail and residential space across eight states.

Connect with us @stjohnprop



This information contained in this publication has been obtained from sources believed to be reliable. St. John Properties makes no guarantee, warranty or representation about this information. Any projections, opinions, assumptions or estimates used here are for example only and do not represent the current or future performance of the property. Interested parties should conduct an independent investigation to determine whether the property suits their needs. REV 09/22