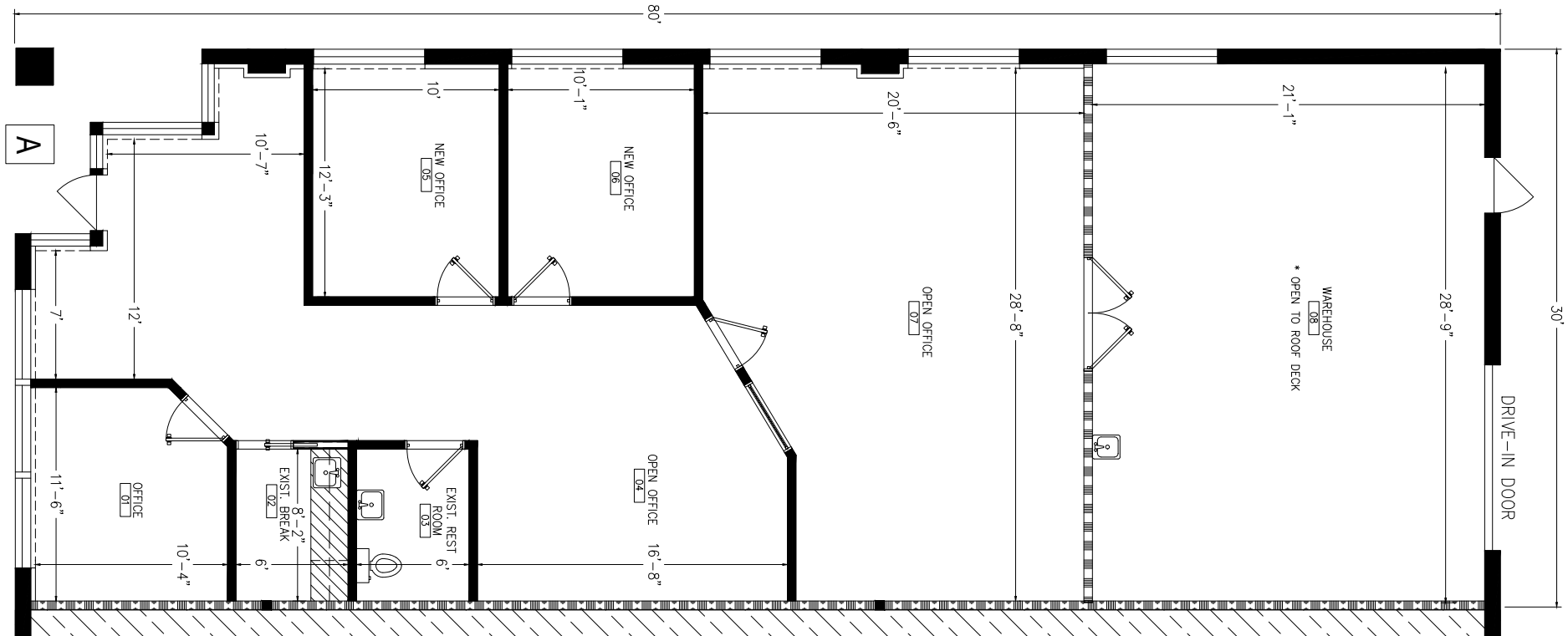
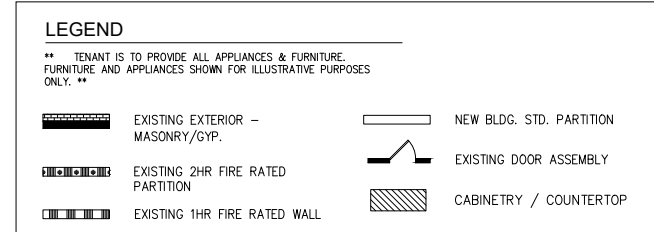
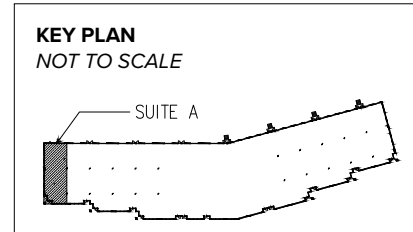


**Total SF Available:**  
2,400 SF

1,750 SF office, 650 SF  
warehouse with drive-in loading



**Note:** This space plan is subject to existing field conditions. This drawing is proprietary and the exclusive property of St. John Properties, Inc. Any duplications, distribution, or other unauthorized use is strictly prohibited.

**Note:** Tenant additionally responsible for separately metered utilities, trash and janitorial services.

## About Corporate Center

With more than 619,400 square feet of flex/office/warehouse space, Corporate Center provides the flexibility to accommodate almost any business use, including office, medical, R&D, lab, retail, showroom, service, distribution, and light industrial. This location offers easy access to major Denver thoroughfares, including Interstate 70, State Highway 470, 6th Avenue (Highway 6) and Colfax Avenue (Highway 40).

150 Capital Drive brings an additional 110,460 square feet of flex office/warehouse space to Corporate Center.



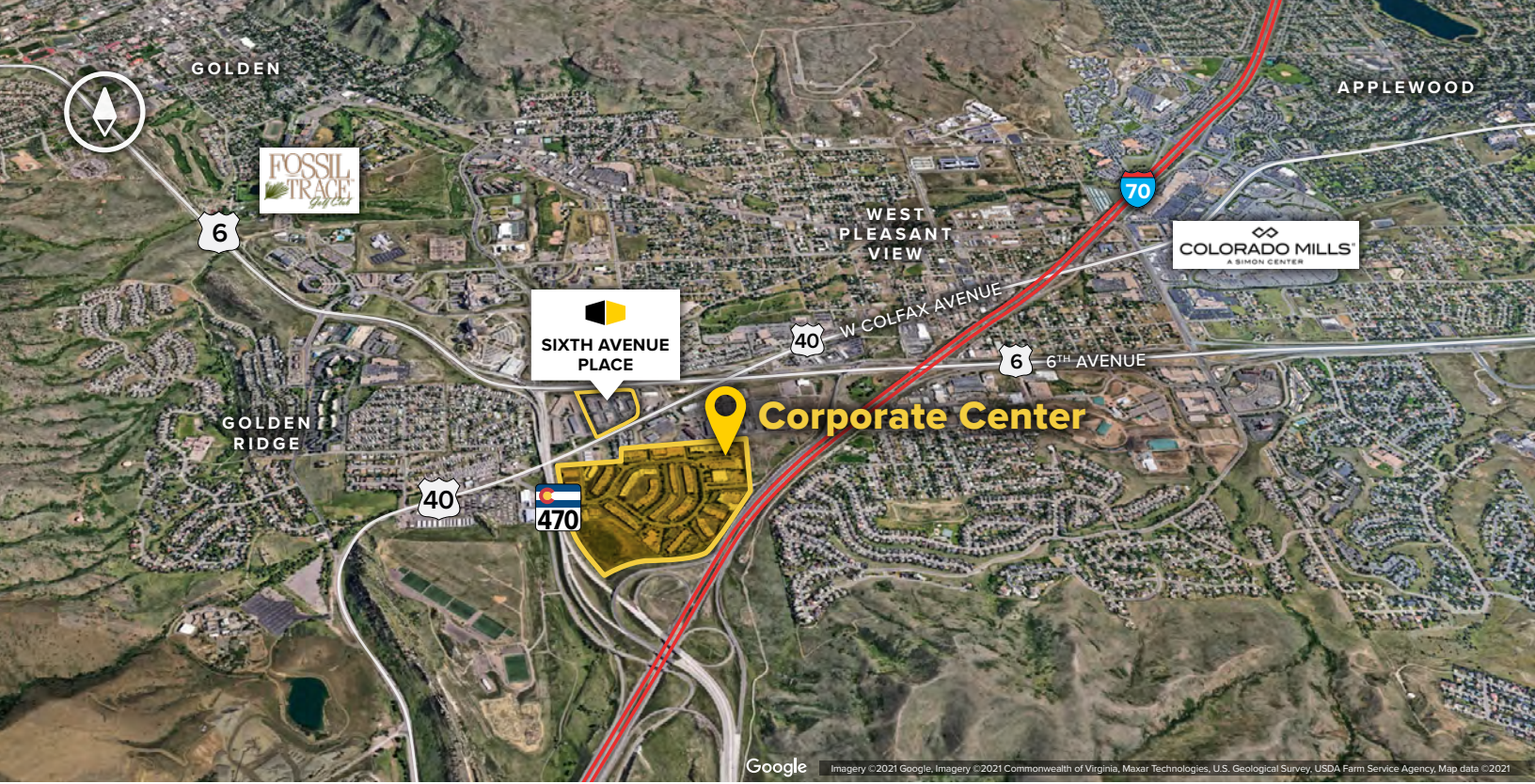
### Flex/R&D Buildings

130 Capital Drive	12,000 SF
150 Capital Drive	110,520 SF
221 Corporate Circle	47,199 SF
301 Commercial Road	39,300 SF
331 Corporate Circle	28,800 SF
400 Corporate Circle	66,700 SF
420 Corporate Circle	28,200 SF
500 Corporate Circle	44,400 SF
600 Corporate Circle	42,700 SF
611 Corporate Circle	28,560 SF
621 Corporate Circle	30,321 SF
700 Corporate Circle	31,680 SF
720 Corporate Circle	55,750 SF
741 Corporate Circle	53,400 SF

### Flex/R&D Specifications

Suite Sizes	1,500 up to 110,520 SF
Ceiling Height	14–16 ft. clear minimum
Offices	Built to suit
Parking	4 spaces per 1,000 SF
Heat	Gas
Roof	EPDM/TPO
Exterior Walls	Brick on block
Loading	Dock or drive-in
Zoning	PUD

For more information on Corporate Center, visit: [sjpi.com/corporatecenter](http://sjpi.com/corporatecenter)



**Distances to:**

Boulder, CO .....	25 miles
Denver, CO (Downtown) .....	15 miles
Denver International Airport .....	35 miles
Denver Tech Center .....	20 miles
Federal Center .....	5 miles
Evergreen/Bergen Park .....	18 miles
Genessee, CO .....	7 miles
Vail, CO .....	85 miles



**Scan with your mobile device to take a virtual tour, download floor plans and more!**

# Contact Us

For additional leasing information or to schedule a tour, contact:

**Brandon Jenkins**  
 Regional Partner, Colorado  
 bjenkins@sjpi.com  
 303.278.7676

**Colorado Regional Office:**  
 500 Corporate Circle | Suite G  
 Golden, CO 80401

**303.278.7676 | SJPI.COM/COLORADO**

**About St. John Properties**

St. John Properties Colorado owns and has developed more than 1.5 million square feet of commercial space across four business communities in the Denver metro area. Headquartered in Baltimore, Maryland, St. John Properties has developed, constructed and owns more than 22 million square feet of office, flex/R&D, warehouse, retail and residential space.

Connect with us @stjohnprop



*This information contained in this publication has been obtained from sources believed to be reliable. St. John Properties makes no guarantee, warranty or representation about this information. Any projections, opinions, assumptions or estimates used here are for example only and do not represent the current or future performance of the property. Interested parties should conduct an independent investigation to determine whether the property suits their needs. REV 06/22*