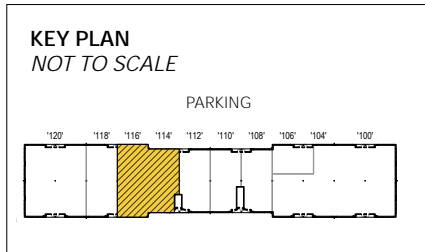


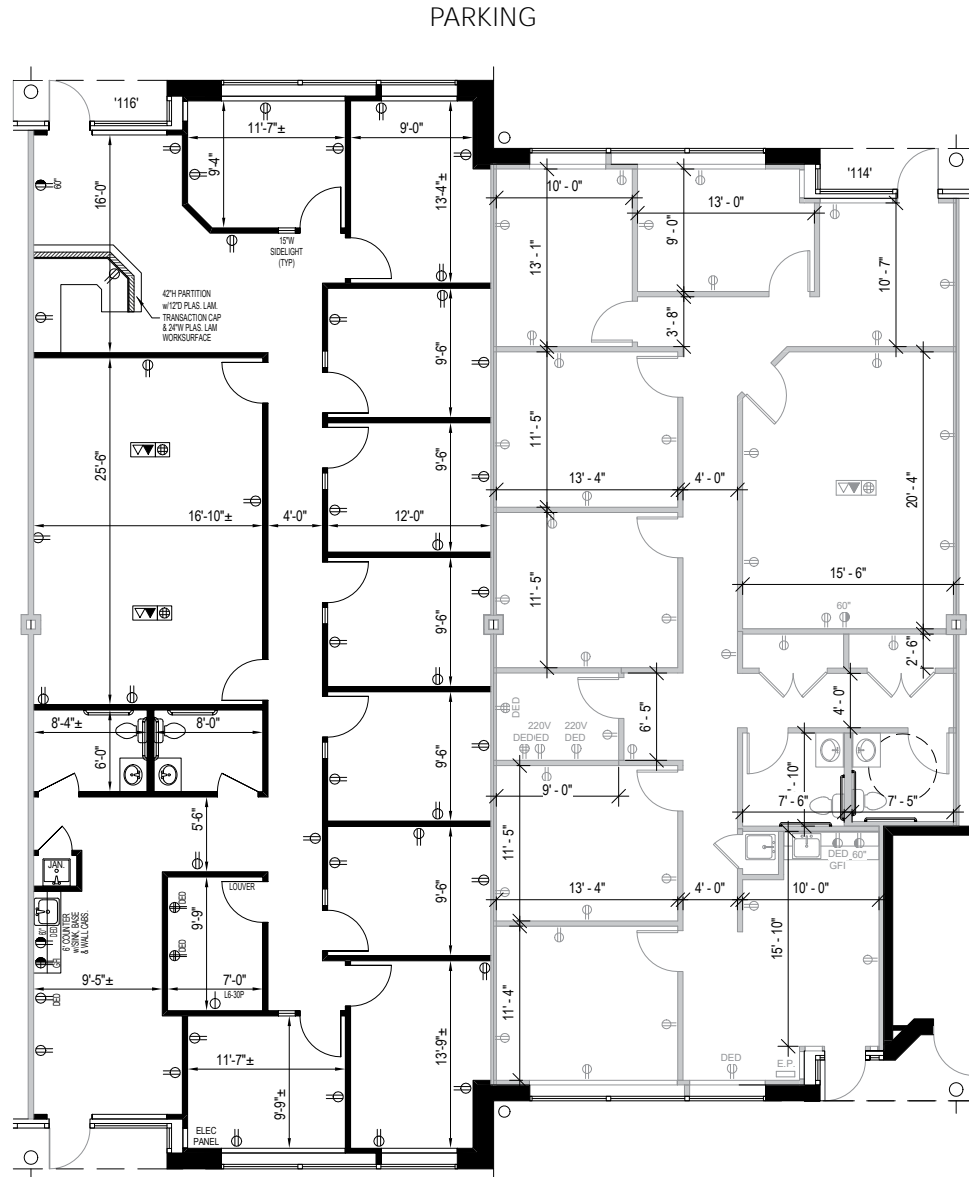


Total SF Available:
5,066 SF

*Heavily built out with offices and
(2) large conference rooms*



Note: This space plan is subject to existing field conditions. This drawing is proprietary and the exclusive property of St. John Properties, Inc. Any duplications, distribution, or other unauthorized use is strictly prohibited.





Scan with your mobile device to take a virtual tour, download floor plans and more!

Contact Us

For additional leasing information or to schedule a tour, contact:

Matt Lenihan
 Vice President, Leasing
 mlenihan@sjpi.com | 410.369.1202

Corporate Headquarters:
 2560 Lord Baltimore Drive
 Baltimore, MD 21244

410.788.0100 | SJPI.COM



About St. John Properties

St. John Properties, Inc. is a full-service commercial real estate firm headquartered in Baltimore, Maryland. The company has developed, constructed, and owns more than 22 million square feet of commercial real estate, including office, ex/R&D, warehouse, retail and residential space.

Connect with us @stjohnprop

