



Waukesha Airport Business Center

1900–2000 Pewaukee Road
Waukesha, WI 53188

About the Property

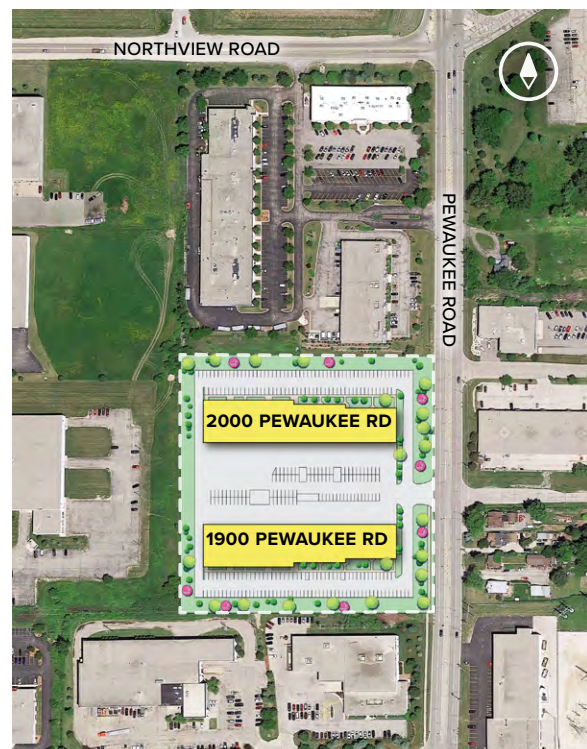
Waukesha Airport Business Center is comprised of two office-warehouse buildings totaling 82,800 sq. ft. Located on the I-94 Corridor in Waukesha County, the business center is one minute from Waukesha County Airport, Waukesha County offices, and the I-94 and Highway 164 Interchange.

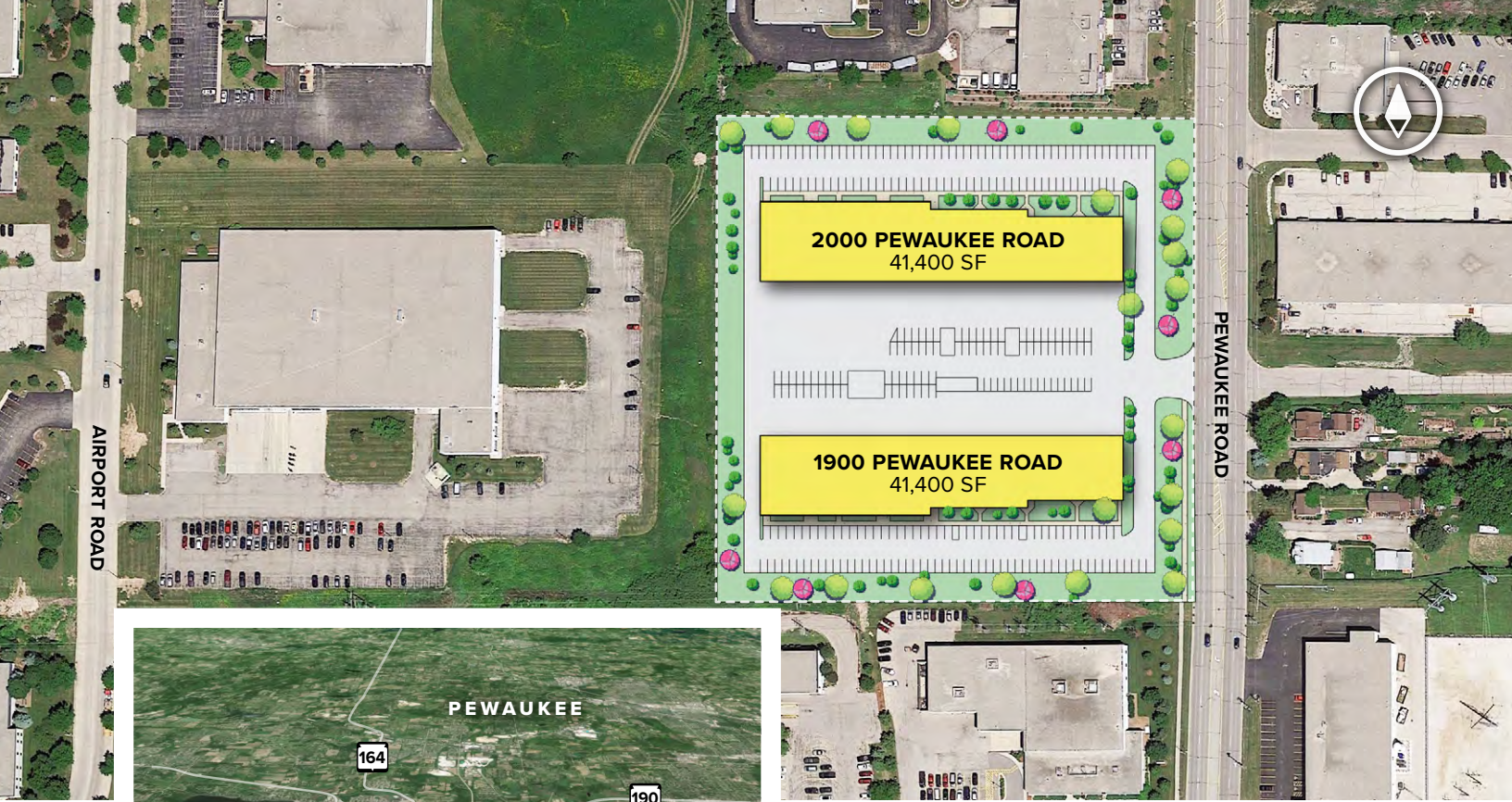
Flex/R&D/Office Buildings

1900 Pewaukee Road	41,400 SF
2000 Pewaukee Road	41,400 SF

Flex/R&D/Office Specifications

Suite Sizes	Up to 41,400 SF
Ceiling Height	16 ft. clear minimum
Parking	212 spaces
Heat	Natural Gas
Roof	EPDM rubber
Exterior Walls	Brick on Block
Zoning	M-3





For more information on Waukesha Airport Business Center, visit: sjpi.com/waukesha

Contact Us

For additional leasing information or to schedule a tour, contact:

Greg Fax

Regional Partner, Wisconsin

gfax@sjpi.com | 262.524.0100

Wisconsin Regional Office:

2000 Pewaukee Road | Suite A
Waukesha, WI 53188

262.524.0100

SJPI.COM/WISCONSIN

About St. John Properties

St. John Properties Wisconsin owns and is developing more than 1.7 million square feet of commercial space across 16 business communities in Wisconsin.

St. John Properties, Inc. is a full-service real estate company headquartered in Baltimore, Maryland. The company owns, manages and has developed more than 22 million square feet of commercial real estate nationwide.

Connect with us [@stjohnprop](https://www.instagram.com/stjohnprop)



MD • CO • LA • NV • PA • UT • VA • WI



This information contained in this publication has been obtained from sources believed to be reliable. St. John Properties makes no guarantee, warranty or representation about this information. Any projections, opinions, assumptions or estimates used here are for example only and do not represent the current or future performance of the property. Interested parties should conduct an independent investigation to determine whether the property suits their needs. REV 05/22