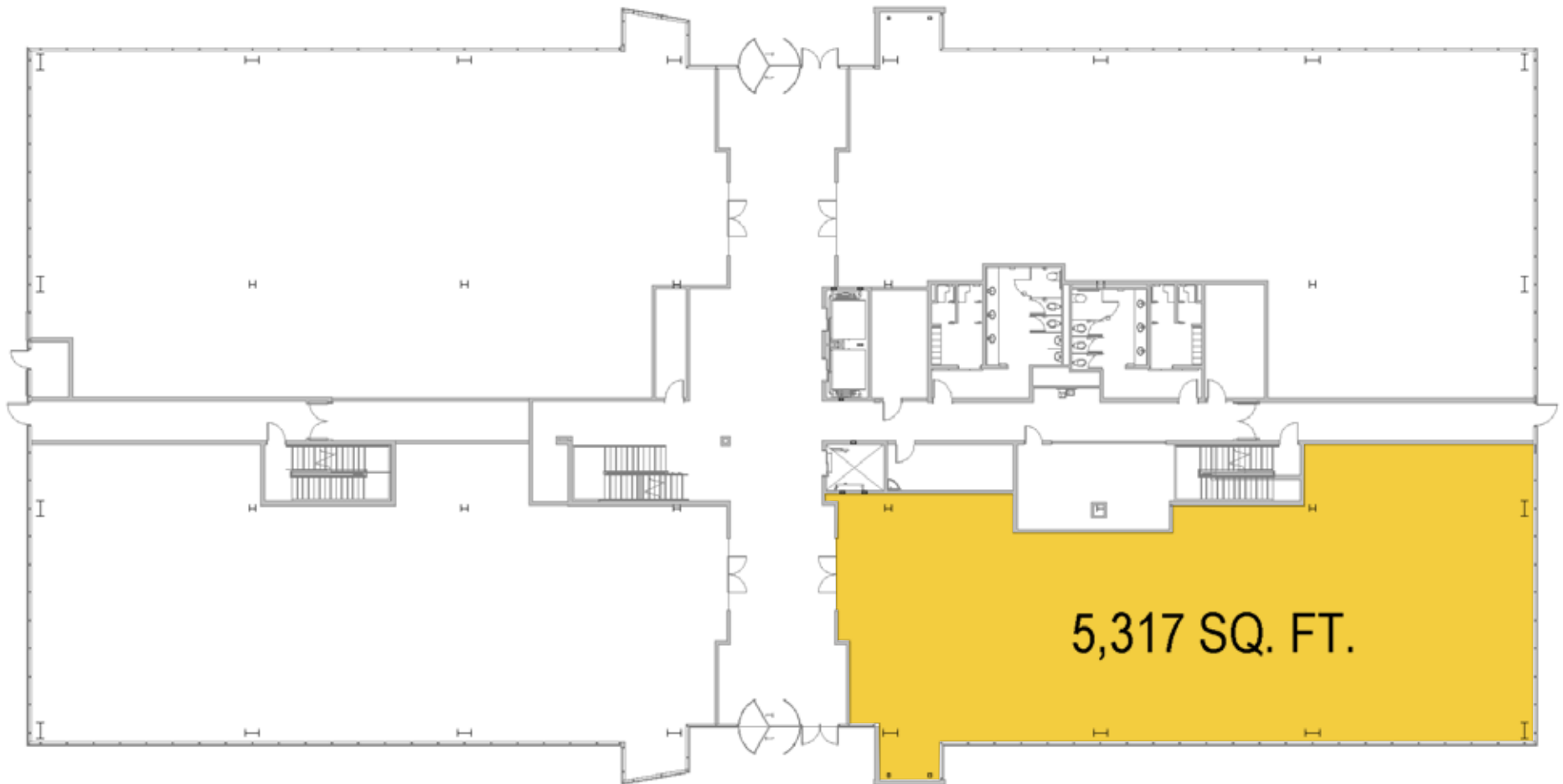


**Total SF Available:**  
5,317 SF





Mountain views & floor-to-ceiling glass

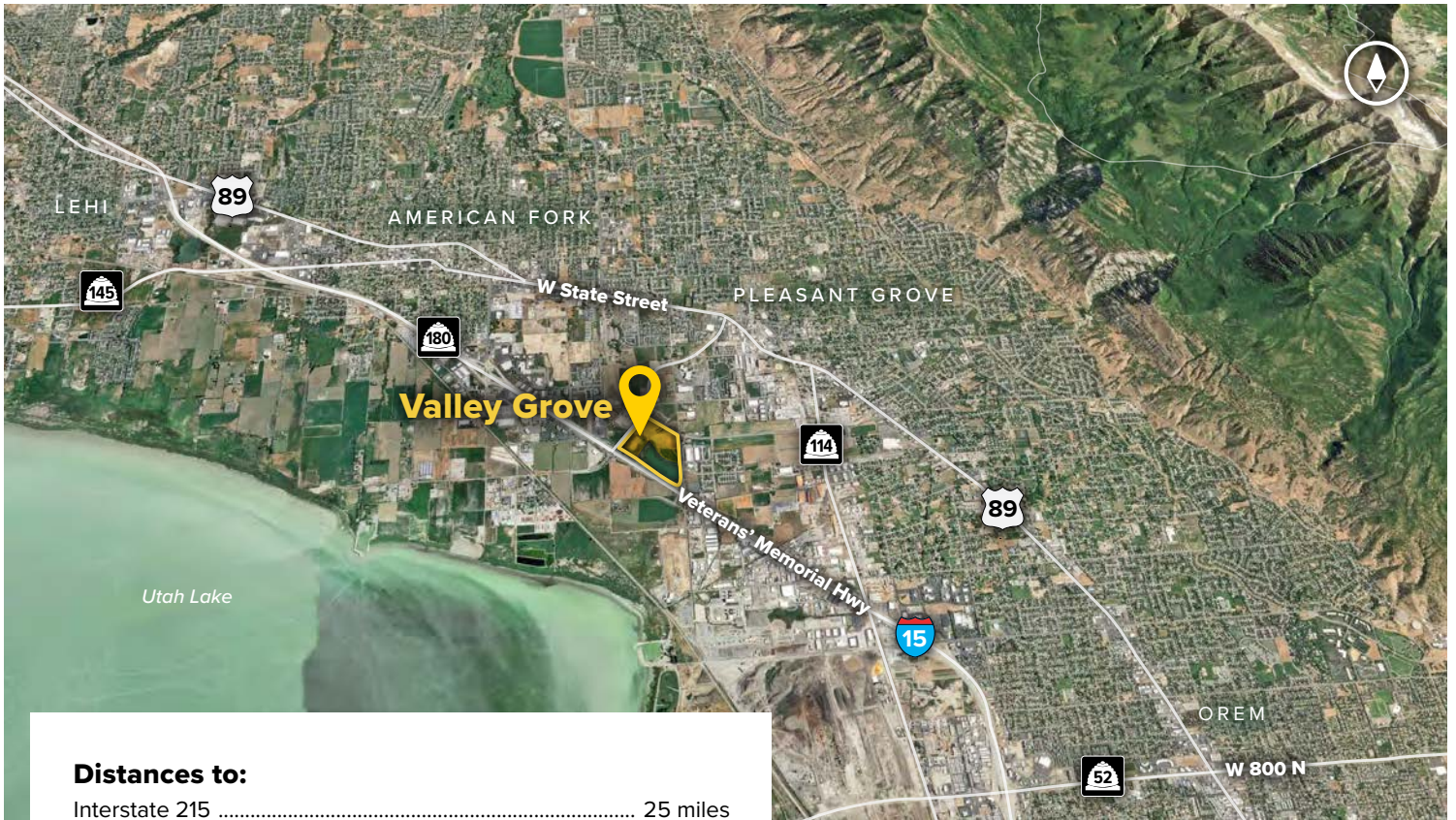


# Valley Grove II

## Mid-Rise Class 'A' Office

Valley Grove II	
1221 S Valley Grove Way	140,769 SF
Mid-Rise Office Specifications	
LEED	Certified
Suite Sizes	2,500 up to 140,769 SF
Ceiling Height	10-13 ft. clear minimum
Offices	Built to suit
Parking	5.5 spaces per 1,000 SF





**Distances to:**

- Interstate 215 ..... 25 miles
- Provo, UT ..... 12 miles
- Salt Lake City, UT ..... 34.5 miles
- Salt Lake City International Airport ..... 38 miles



**Scan with your mobile device to take a virtual tour, download floor plans and more!**

# Contact Us

For additional leasing information or to schedule a tour, contact:

**Scott Gifford**  
*Leasing Representative*  
 sgifford@sjpiutah.com  
 801.899.7991

**Daniel Thomas**  
*Regional Partner, Utah*  
 dthomas@sjpiutah.com  
 801.899.7991

**Utah Office:**  
 1064 S. North County Boulevard | Suite 190  
 Pleasant Grove, Utah 84062

**801.899.7991 | SJPI.COM/UTAH**



**About St. John Properties**

St. John Properties Utah owns and is developing more than 1.7 million square feet of commercial space across four business communities in Salt Lake, Weber, and Utah Counties.

St. John Properties, Inc. is one of the nation's largest and most successful privately held commercial real estate firms. The company owns, manages and has developed office, flex/research and development, warehouse, retail and residential space nationwide.

Connect with us @stjohnprop



*This information contained in this publication has been obtained from sources believed to be reliable. St. John Properties makes no guarantee, warranty or representation about this information. Any projections, opinions, assumptions or estimates used here are for example only and do not represent the current or future performance of the property. Interested parties should conduct an independent investigation to determine whether the property suits their needs. REV 11/22*