



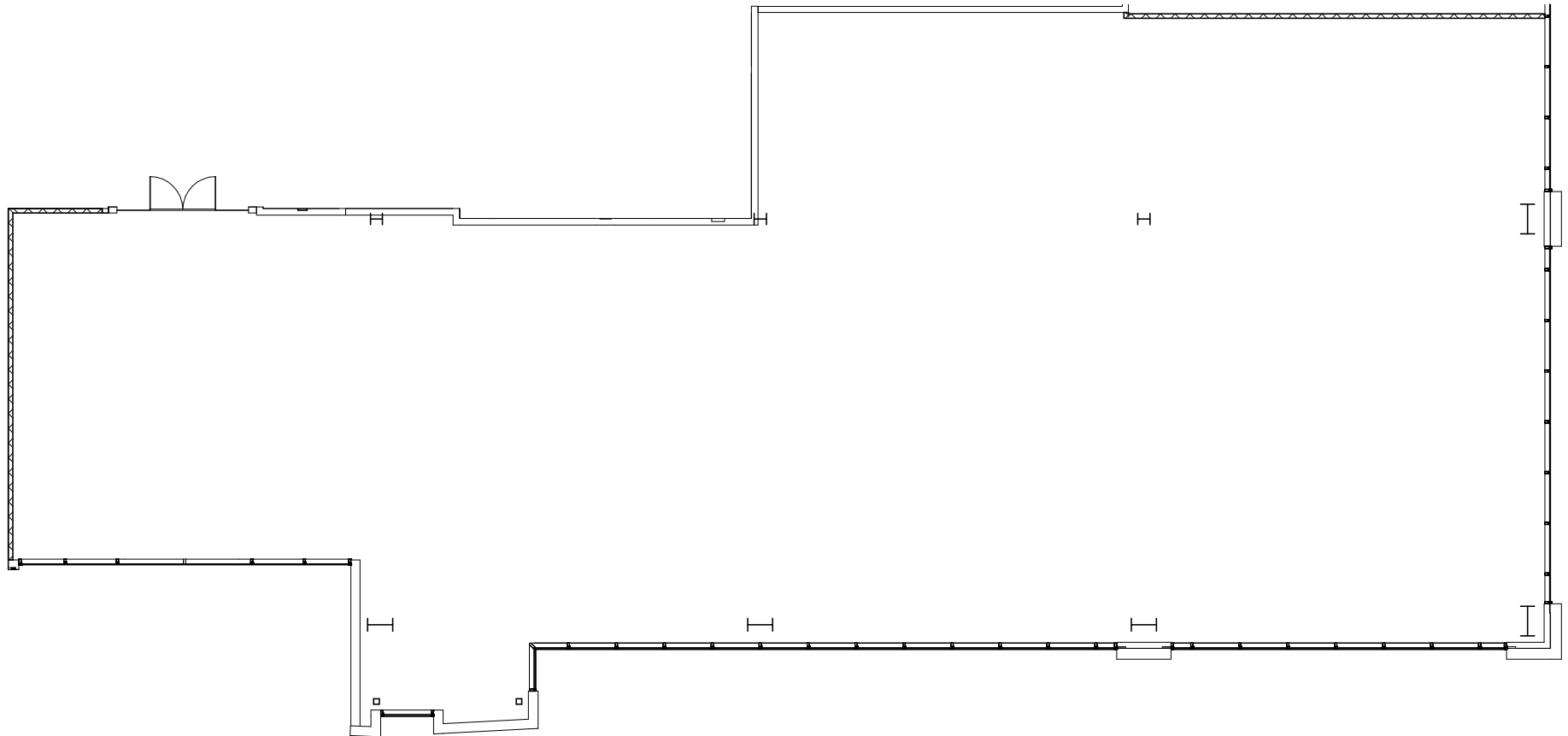
Total SF Available:

7,503 SF

Second floor shell space

KEY PLAN

NOT TO SCALE

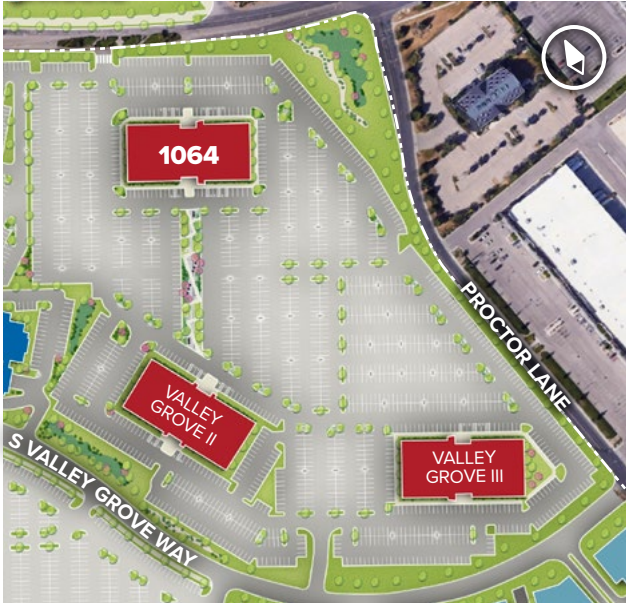


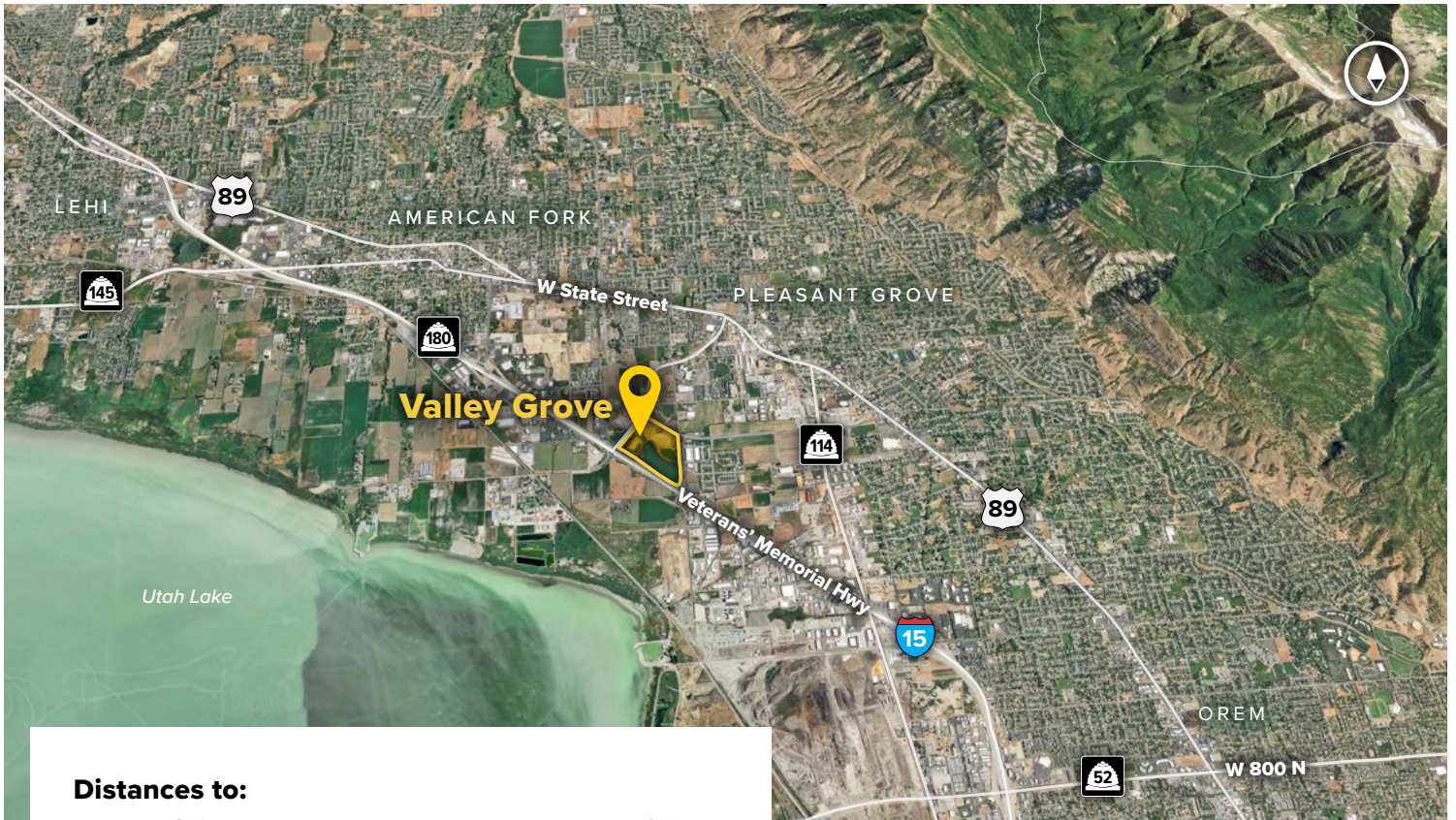


Valley Grove I

Mid-Rise Class ‘A’ Office

| Valley Grove I | |
|--------------------------------|-------------------------|
| 1064 S North County Blvd | 165,513 SF |
| Mid-Rise Office Specifications | |
| LEED | Certified |
| Suite Sizes | 2,500 up to 165,513 SF |
| Ceiling Height | 10-13 ft. clear minimum |
| Offices | Built to suit |
| Parking | 5.5 spaces per 1,000 SF |





Distances to:

| | |
|--|------------|
| Interstate 215 | 25 miles |
| Provo, UT (Downtown) | 12 miles |
| Salt Lake City, UT (Downtown) | 34.5 miles |
| Salt Lake City International Airport | 38 miles |



Scan now to take a virtual tour, download floor plans and more!

Contact Us

For additional leasing information or to schedule a tour, contact:

Scott Gifford

Director of Leasing

sgifford@sjpi.com

801.899.7991

Daniel Thomas

Regional Partner, Utah

dthomas@sjpi.com

801.899.7991

Utah Office:

1064 S North County Boulevard | Suite 190
Pleasant Grove, Utah 84062

801.899.7991 | SJPI.COM/UTAH



MD • CO • FL • LA • NC • NV • PA • TX • UT • VA • WI



About St. John Properties

St. John Properties Utah owns and is developing more than 1.9 million square feet of commercial space across five business communities in Salt Lake, Weber, and Utah Counties.

St. John Properties, Inc. is one of the nation's largest and most successful privately held commercial real estate firms. Founded in 1971, the vertically-integrated company develops, owns and manages office, flex/research and development, warehouse, retail and residential space nationwide.

Connect with us @stjohnprop



This information contained in this publication has been obtained from sources believed to be reliable. St. John Properties makes no guarantee, warranty or representation about this information. Any projections, opinions, assumptions or estimates used here are for example only and do not represent the current or future performance of the property. Interested parties should conduct an independent investigation to determine whether the property suits their needs. REV 1/24