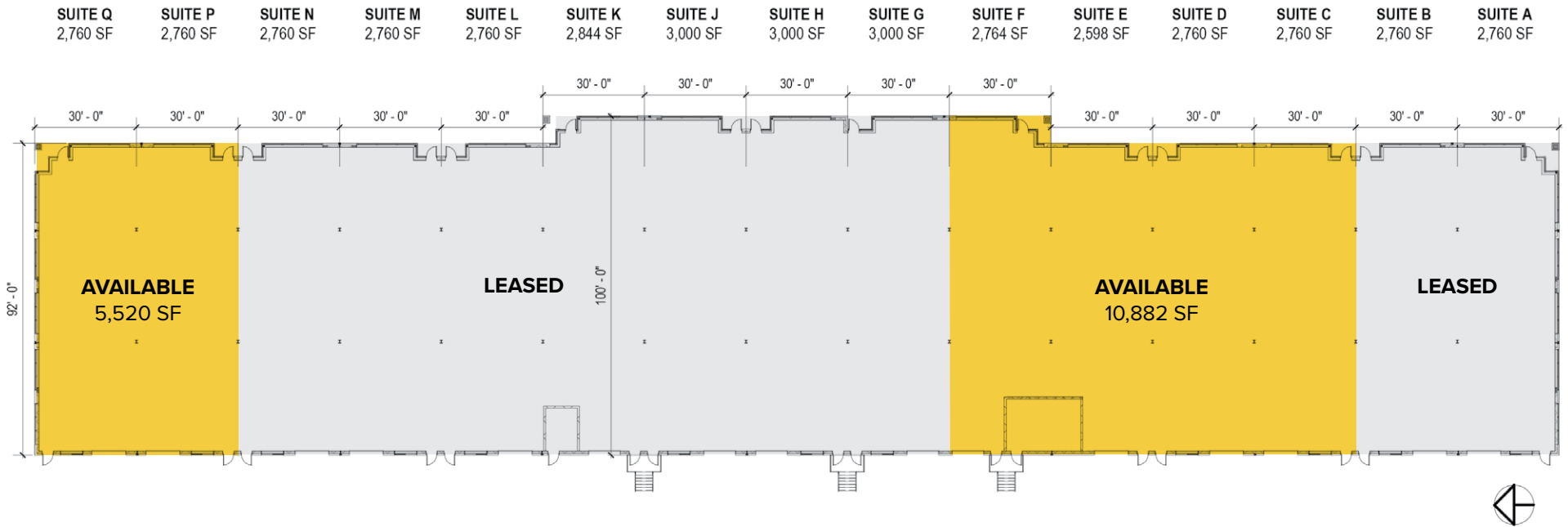
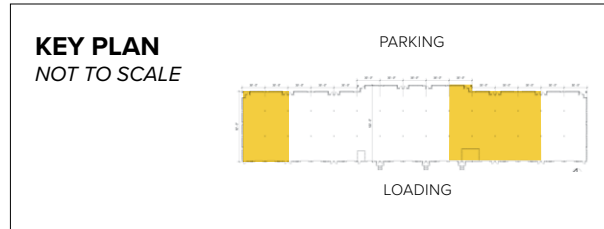


Spring Pointe Exchange
2322 West 500 North | Springville, UT 84663
Suites C–F

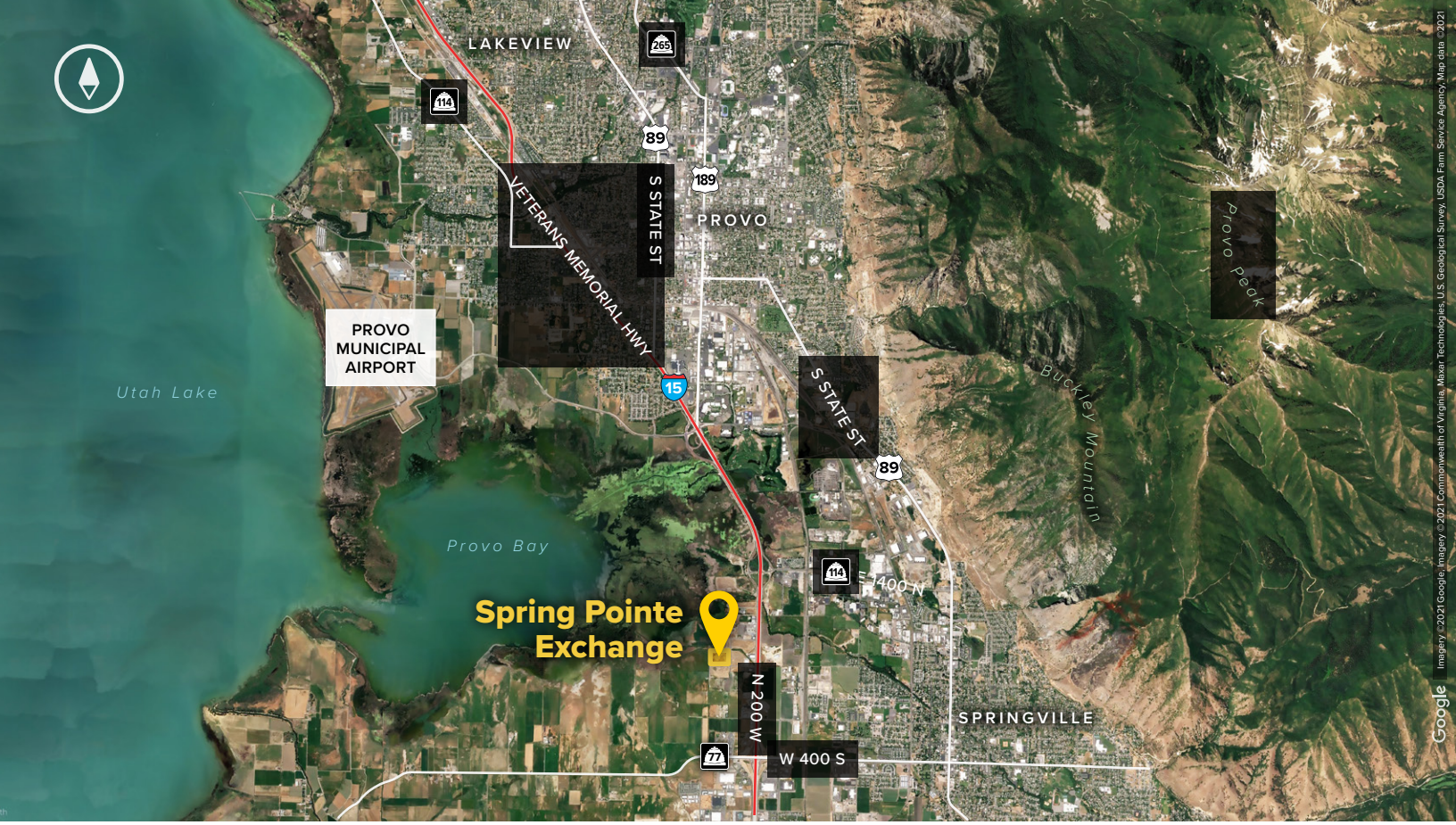


Total SF Available:
2,598 up to 10,882 SF

New shell construction, build-to-suit with dock and drive-in loading capabilities



Note: This space plan is subject to existing field conditions. This drawing is proprietary and the exclusive property of St. John Properties, Inc. Any duplications, distribution, or other unauthorized use is strictly prohibited.



Distances to:

American Fork, UT	17.5 miles
Interstate 15	1.5 miles
Provo Municipal Airport	6 miles
Provo, UT (Downtown)	5 miles
Salt Lake City, UT (Downtown)	48 miles
Salt Lake City International Airport	53 miles
Spanish Fork, UT	5 miles



Scan with your mobile device to take a virtual tour, download floor plans and more!

Contact Us

Scott Gifford
Leasing Representative
 sgifford@sjpiutah.com
 801.899.7991

Daniel Thomas
Regional Partner, Utah
 dthomas@sjpiutah.com
 801.899.7991

Utah Office:
 1064 S. North County Boulevard | Suite 190
 Pleasant Grove, Utah 84062

801.899.7991 | SJPIUTAH.COM



About St. John Properties

St. John Properties Utah owns and is developing more than 1.7 million square feet of commercial space across four business communities in Salt Lake, Weber, and Utah Counties.

St. John Properties, Inc. is a full-service real estate company headquartered in Baltimore, Maryland. The company owns, manages and has developed more than 21 million square feet of commercial real estate across eight states.

Connect with us @stjohnprop



This information contained in this publication has been obtained from sources believed to be reliable. St. John Properties makes no guarantee, warranty or representation about this information. Any projections, opinions, assumptions or estimates used here are for example only and do not represent the current or future performance of the property. Interested parties should conduct an independent investigation to determine whether the property suits their needs. REV 02/22