



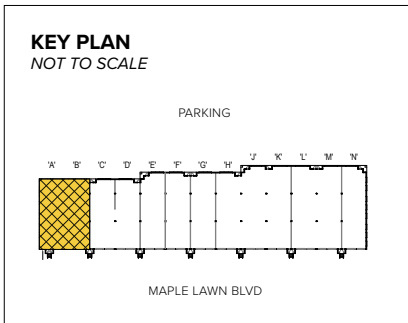
410.788.0100 | SJPI.COM

Riverside Corporate Center 1371 Brass Mill Road | Belcamp, MD 21017 Suites A-B



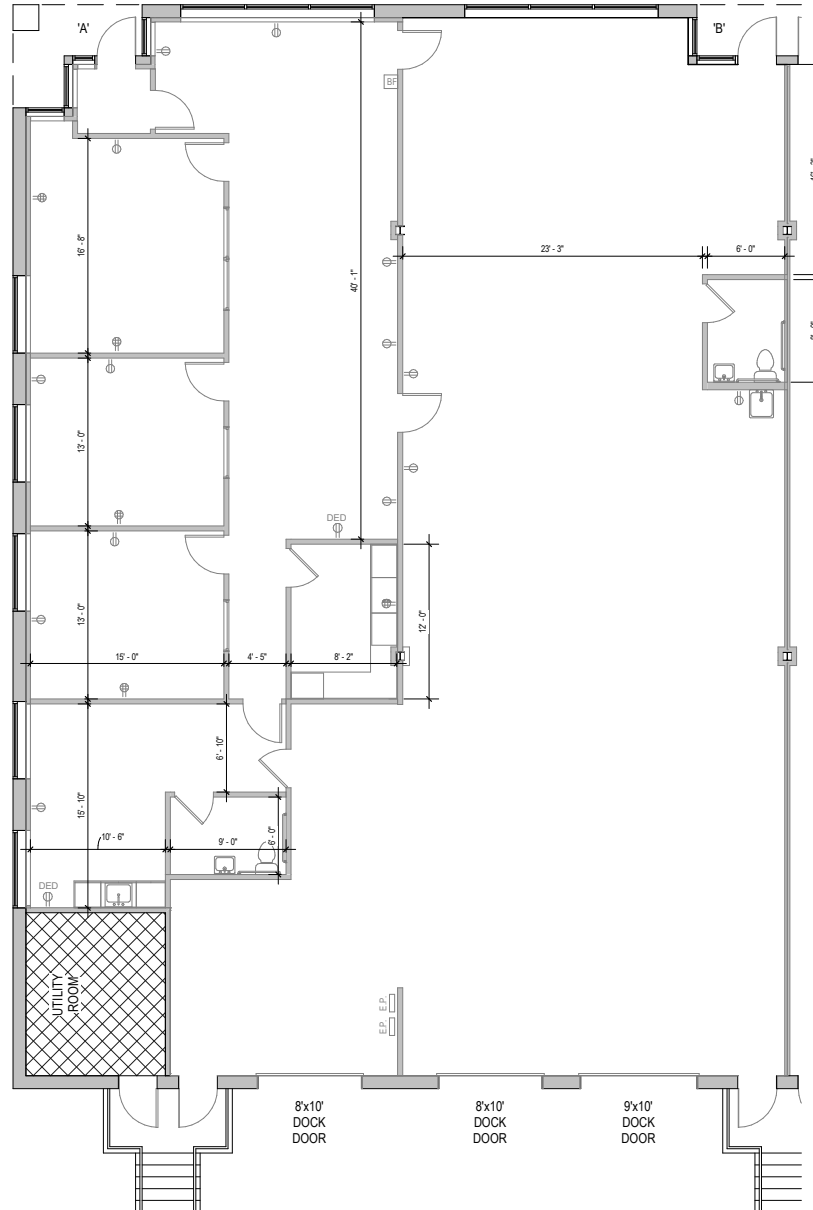
Total SF Available:
5,040 SF

1,808 sq. ft. office, 3,202 sq. ft. conditioned warehouse with dock loading, end unit



**CLICK TO VIEW
VIRTUAL TOUR**

Note: This space plan is subject to existing field conditions. This drawing is proprietary and the exclusive property of St. John Properties, Inc. Any duplications, distribution, or other unauthorized use is strictly prohibited.



About Riverside Corporate Center

Riverside Corporate Center is an eight acre business community located off Philadelphia Road (MD Route 7) near Bel Air, Maryland in Harford County.

The unified architecture of St. John Properties' two buildings, containing more than 74,800 square feet of office and flex/R&D space, provides Riverside Corporate Center a campus-like business environment. Tenant sizes from 2,400 square feet up to 38,700 square feet of space offer businesses straight-forward, economical and high-utility space in a covenant-protected, well-maintained atmosphere. Thirty foot wide spaces combined with 16 foot ceiling heights offer maximum flexibility. Free, generous parking is available adjacent to the buildings.

Flex/R&D Buildings

1369 Brass Mill Road 38,700 SF

1371 Brass Mill Road 36,120 SF

Flex/R&D Specifications

Suite Sizes 2,400 up to 38,700 SF

Ceiling Height 16 ft. clear minimum

Parking 4 spaces per 1,000 SF

Heat Gas

Roof EPDM rubber

Construction Brick on block

Loading Dock or drive-in

Zoning C-1

For more information on Riverside Corporate Center, visit: sjpi.com/riversidecorporate





Distances to:

- Aberdeen Proving Ground 4 miles
- Baltimore, MD (Downtown) 26 miles
- Bel Air, MD 9 miles
- BWI Airport 35 miles
- Interstate 95 0.5 miles
- Interstate 695 (Baltimore Beltway) 17 miles
- Philadelphia, PA (Downtown) 70 miles
- Wilmington, DE (Downtown) 44 miles



Scan with your mobile device to take a virtual tour, download floor plans and more!

Contact Us

For additional leasing information or to schedule a tour, contact:

Michael Tait
 Leasing Representative
 mtait@sjpi.com | 443.464.1315

Corporate Headquarters:
 2560 Lord Baltimore Drive | Baltimore, MD 21244
410.788.0100 | SJPI.COM

About St. John Properties

St. John Properties, Inc. is one of the nation's largest and most successful privately held commercial real estate firms. Founded in 1971, the vertically-integrated company develops, owns and manages office, flex/research and development, warehouse, retail and residential space nationwide.

Connect with us @stjohnprop



This information contained in this publication has been obtained from sources believed to be reliable. St. John Properties makes no guarantee, warranty or representation about this information. Any projections, opinions, assumptions or estimates used here are for example only and do not represent the current or future performance of the property. Interested parties should conduct an independent investigation to determine whether the property suits their needs. REV 12/22