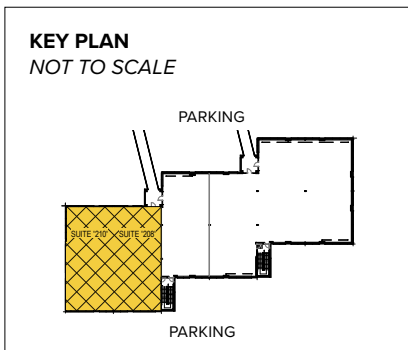


**Reisterstown Crossing**  
120 Westminster Pike | Reisterstown, MD 21136  
Suites 208-210 | Second Floor

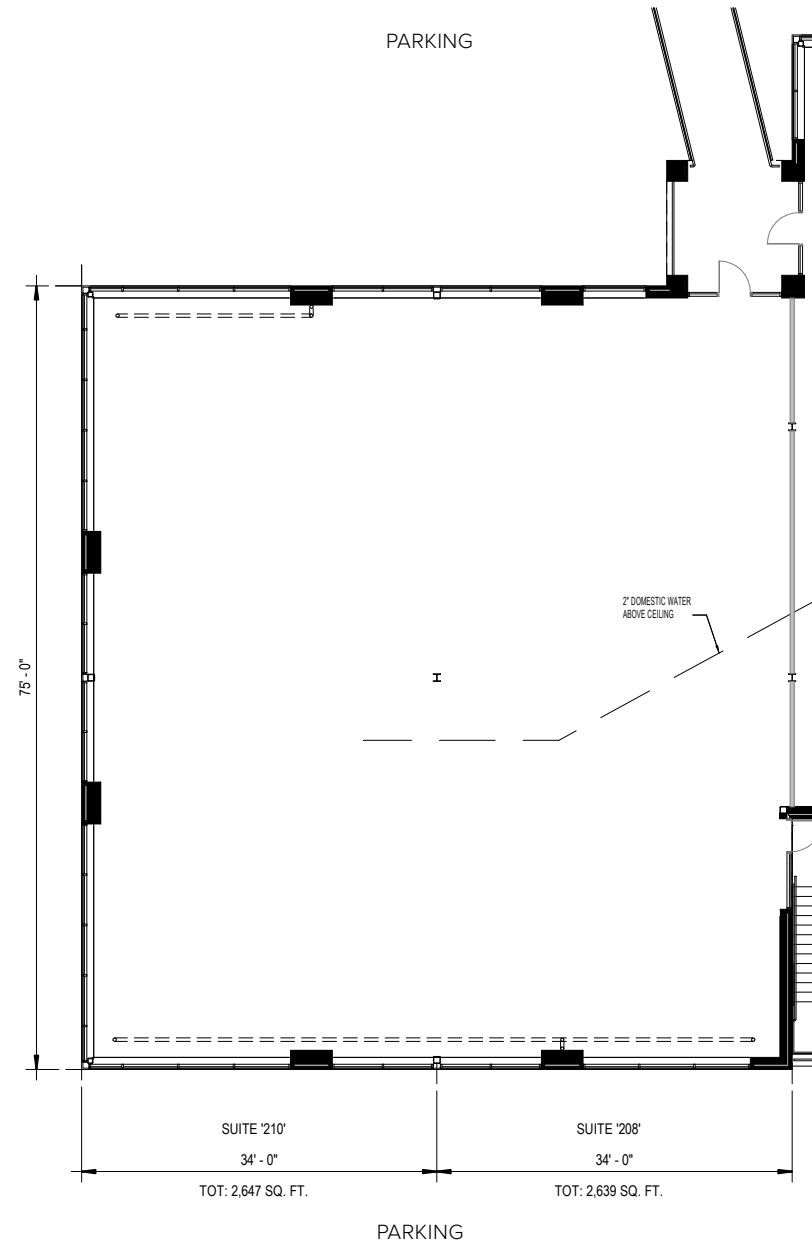


**Total SF Available:**  
5,286 SF

*Direct entry, top floor, new construction end unit, great glass line, build-to-suit*



**Note:** This space plan is subject to existing field conditions. This drawing is proprietary and the exclusive property of St. John Properties, Inc. Any duplications, distribution, or other unauthorized use is strictly prohibited.



## About Reisterstown Crossing

The unified architecture of St. John Properties' three office buildings, totaling 75,480 square feet of office space, and the 12,675 square foot retail component, provide Reisterstown Crossing a campus-like business environment. Tenant sizes from 1,300 square feet up to 30,600 square feet of space offer businesses straight-forward, economical and high-utility space in a covenant-protected, well-maintained atmosphere. Free, ample parking is available adjacent to the buildings.

The retail portion of Reisterstown Crossing features frontage and roadside visibility from Westminster Pike (MD Route 140) and supports the surrounding communities and businesses.

### Traffic Count (MDOT)

Butler Road at I-795: 56,470 vehicles/day

### Demographics

	1 Mile	3 Miles	5 Miles
Population	4,610	36,131	70,134
Households	1,769	13,583	26,542
Avg. Household Income	\$128,066	\$128,293	\$128,504



### Single-Story Office Building

116 Westminster Pike 14,280 SF **LEED GOLD**

### Single-Story Office Specifications

LEED	Gold   Core & shell
Suite Sizes	1,300 up to 14,280 SF
Ceiling Height	9 ft. clear minimum
Parking	5 spaces per 1,000 SF
Heat	Gas
Roof	EPDM rubber
Construction	Brick on block
Zoning	BM

### Two-Story Office Buildings

118 Westminster Pike 30,600 SF **LEED GOLD**  
120 Westminster Pike 30,600 SF **LEED DESIGNED**

### Two-Story Office Specifications

LEED	Gold   Core & shell
Suite Sizes	2,318 up to 30,600 SF
Ceiling Height	10 ft. clear minimum
Parking	4 spaces per 1,000 SF
Heat: 1st Floor	Heat pump
Heat: 2nd Floor	Gas
Zoning	BM

### Retail Building

114 Westminster Pike 12,675 SF

For more information on Reisterstown Crossing, visit: [sjpi.com/reisterstowncrossing](http://sjpi.com/reisterstowncrossing)







#### Distances to:

Baltimore, MD (Downtown) .....	18 miles
BWI Airport .....	24 miles
Hampstead, MD .....	10 miles
Hanover, PA .....	26 miles
Interstate 695 .....	9 miles
Interstate 795 .....	2 miles
Manchester, MD .....	14 miles
Owings Mills, MD .....	5 miles
Westminster, MD .....	12 miles



Scan with your mobile device to take a virtual tour, download floor plans and more!

## Contact Us

For additional leasing information or to schedule a tour, contact:

**Stephanie Caronna**

Leasing Representative

scaronna@sjpi.com | 410.369.1235

#### Corporate Headquarters:

2560 Lord Baltimore Drive | Baltimore, MD 21244

**410.788.0100 | SJPI.COM**

#### About St. John Properties

St. John Properties, Inc. is one of the nation's largest and most successful privately held commercial real estate firms. The company owns, manages, and has developed office, flex/research and development, warehouse, retail, and residential space nationwide.

Connect with us @stjohnprop



This information contained in this publication has been obtained from sources believed to be reliable. St. John Properties makes no guarantee, warranty or representation about this information. Any projections, opinions, assumptions or estimates used here are for example only and do not represent the current or future performance of the property. Interested parties should conduct an independent investigation to determine whether the property suits their needs. REV 07/23