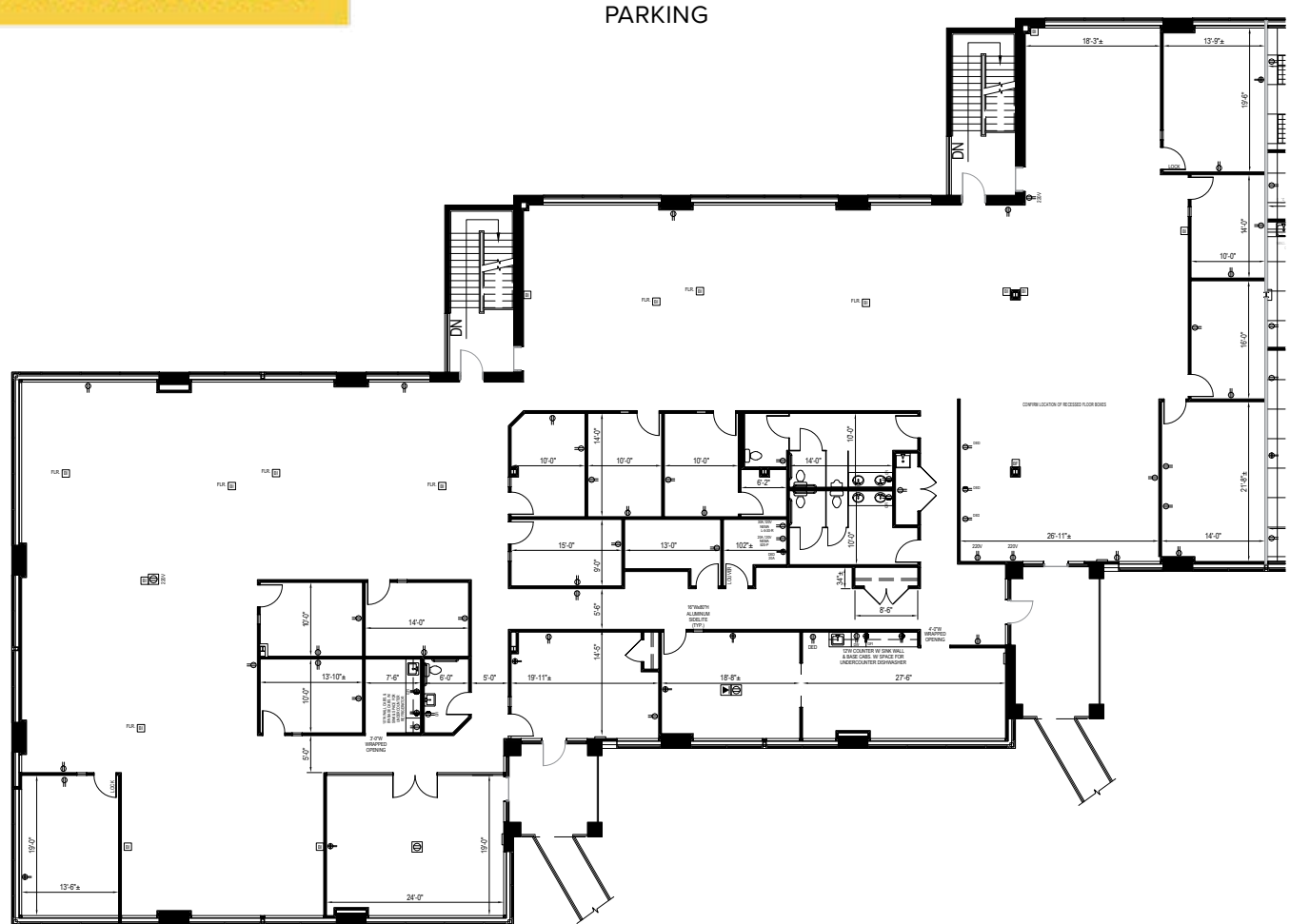
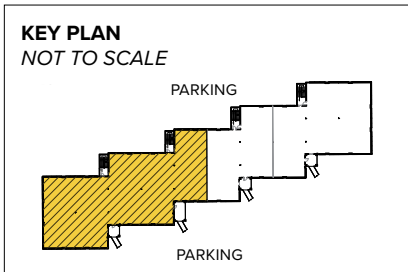




TAKE A VIRTUAL TOUR

Total SF Available:
12,750 SF

Nice end unit with mix of individual and open office, multi-stalled restrooms and large break room



Note: This space plan is subject to existing field conditions. This drawing is proprietary and the exclusive property of St. John Properties, Inc. Any duplications, distribution, or other unauthorized use is strictly prohibited.

PARKING

About Quarterfield Center

Quarterfield Center is an 18-acre business community located near the intersection of MD Route 174 (Quarterfield Road) and Interstate 97.

The business park is comprised of five office buildings and one retail building, totaling approximately 181,440 square feet of space, and provides Quarterfield Center a campus-like business environment. Two of the buildings have been custom-designed to suit medical/office requirements.

Tenant sizes from 1,005 square feet to 61,200 square feet of space offer businesses straight-forward, economical and high-utility space in a covenant-protected, well-maintained atmosphere. Free, generous parking is available adjacent to the buildings.

Two-Story Office Space

808 Landmark Drive 61,200 SF

810 Landmark Drive 51,000 SF

Two-Story Office Specifications

Suite Sizes 1,275 up to 61,200 SF

Ceiling Height 9 ft. clear minimum

Parking 5 spaces per 1,000 SF

Zoning C-2

Single-Story Office Space

802 Landmark Drive 22,020 SF

804 Landmark Drive 18,000 SF

806 Landmark Drive 22,020 SF

Single-Story Office Specifications

Suite Sizes 1,005 up to 22,020 SF

Ceiling Height 9 ft. clear minimum

Parking 5 spaces per 1,000 SF

HVAC Gas

Roof EPDM rubber

Construction Brick on block

Zoning C-2

Inline Retail Space

801 Landmark Drive 7,200 SF

Retail Tenants

Suite A Subway 1,467 SF

Suite B Soleil Pharmacy 913 SF

Suite C VIP Nail Salon 1,220 SF

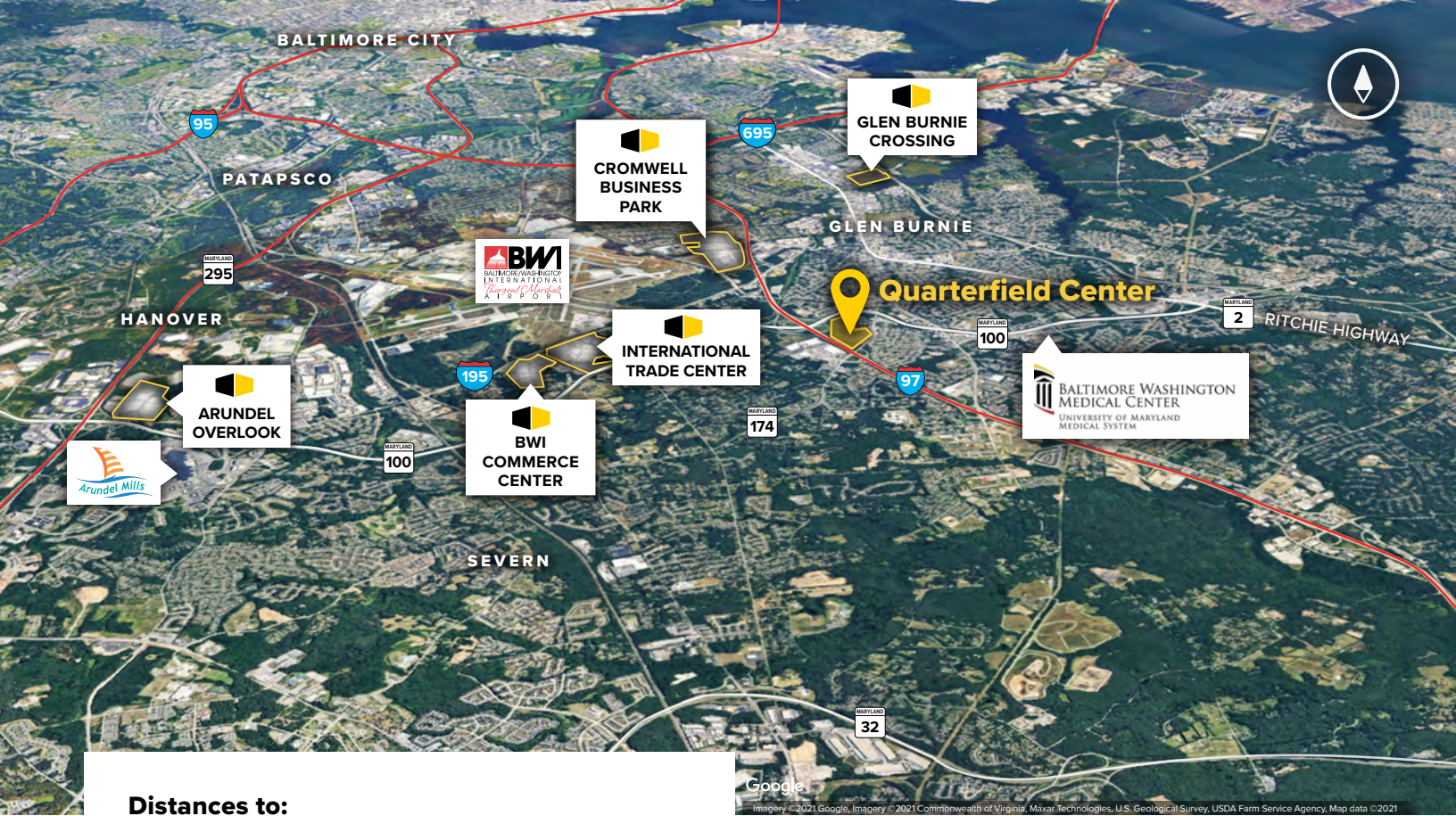
Suites D-E Squisito 2,132 SF

Suite F Edible Arrangements 1,467 SF

Pictured Below: 804 Landmark Drive, single-story office building; Pictured Right: 801 Landmark drive, inline retail building

Visit sjpi.com/quarterfieldcenter to learn more





Distances to:

- Annapolis, MD (Downtown) 16 miles
- Baltimore, MD (Downtown) 10 miles
- Baltimore Washington Medical Center 2 miles
- BWI Airport 4 miles
- Interstate 95 8 miles
- Interstate 495 (Capital Beltway) 20 miles
- Interstate 695 (Baltimore Beltway) 4 miles
- MD 295 5 miles
- MD Route 100 0.25 mile
- Washington, D.C. (Downtown) 30 miles

Contact Us

For additional leasing information or to schedule a tour, contact:

Michael Tait
 Leasing Representative
 mtait@sjpi.com | 443.464.1315

Corporate Headquarters:
 2560 Lord Baltimore Drive | Baltimore, MD 21244

410.788.0100 | SJPI.COM



Scan with your mobile device to take a virtual tour, download floor plans and more!

About St. John Properties

St. John Properties, Inc. is one of the nation's largest and most successful privately held commercial real estate firms. Founded in 1971, the vertically-integrated company develops, owns and manages office, flex/research and development, warehouse, retail and residential space nationwide.

Connect with us @stjohnprop



This information contained in this publication has been obtained from sources believed to be reliable. St. John Properties makes no guarantee, warranty or representation about this information. Any projections, opinions, assumptions or estimates used here are for example only and do not represent the current or future performance of the property. Interested parties should conduct an independent investigation to determine whether the property suits their needs. REV 12/22