



Oak Creek Technology Center

9803–9835 South 13th Street

Oak Creek, WI 53154

About The Property

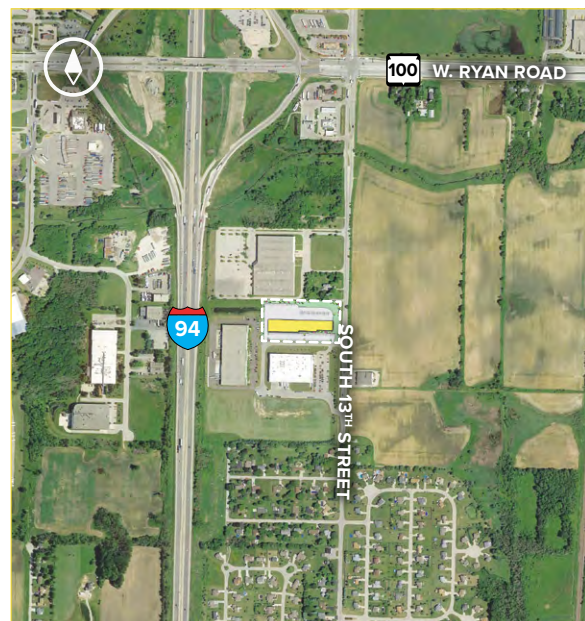
Oak Creek Technology Center is located at the southern end of Milwaukee County, the center is on South 13th Street adjacent to Interstate 94, just a half mile south of Ryan Road (Highway 100).

Flex/R&D/Office Buildings

9803-9835 South 13th Street 48,900 SF

Flex/R&D/Office Specifications

Suite Sizes	1,500 up to 48,900 SF
Ceiling Height	16 ft. clear minimum
Parking	220 spaces
Heat	Natural Gas
Roof	EPDM rubber
Exterior Walls	Masonry
Loading	Dock or drive-in
Zoning	I - Industrial

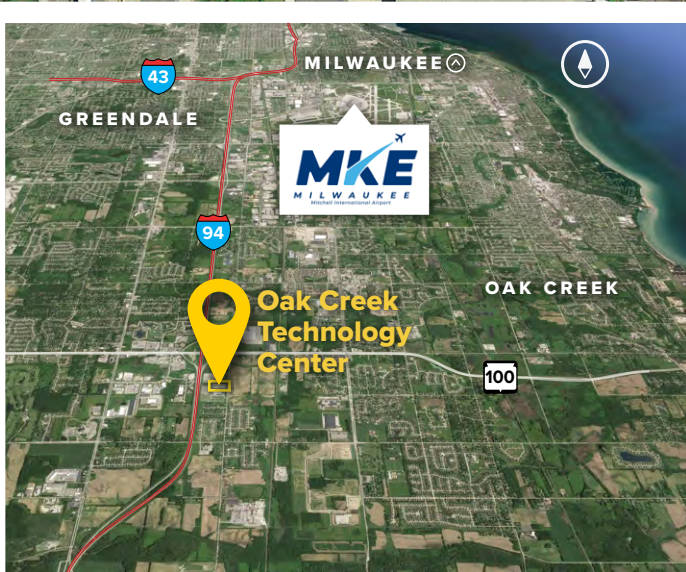


ST. JOHN
PROPERTIES

Placing Our Clients' Needs First Since 1971

SJPI.COM/WISCONSIN | 262.524.0100

NAIOP
COMMERCIAL REAL ESTATE
DEVELOPMENT ASSOCIATION
**NATIONAL
DEVELOPER
OF THE YEAR**
— 2018 —



For more information on Oak Creek Technology Center, visit: sjpi.com/oakcreek

Contact Us

For additional leasing information or to schedule a tour, contact:

Greg Fax
 Regional Partner, Wisconsin
gfax@sjpi.com | 262.524.0100

Wisconsin Regional Office:
 2000 Pewaukee Road | Suite A
 Waukesha, WI 53188

262.524.0100
SJPI.COM/WISCONSIN

About St. John Properties

St. John Properties Wisconsin owns and is developing more than 1.7 million square feet of commercial space across 16 business communities in Wisconsin.

St. John Properties, Inc. is a full-service real estate company headquartered in Baltimore, Maryland. The company owns, manages and has developed more than 22 million square feet of commercial real estate nationwide.

Connect with us [@stjohnprop](https://www.instagram.com/stjohnprop)



This information contained in this publication has been obtained from sources believed to be reliable. St. John Properties makes no guarantee, warranty or representation about this information. Any projections, opinions, assumptions or estimates used here are for example only and do not represent the current or future performance of the property. Interested parties should conduct an independent investigation to determine whether the property suits their needs. REV 05/22