



Mequon Research Center II

10520 & 10650 N. Baehr Road

Mequon, WI 53092

About the Property

Class 'A' flex space suitable for uses including office, showroom, lab, office-warehouse, light manufacturing or warehouse.

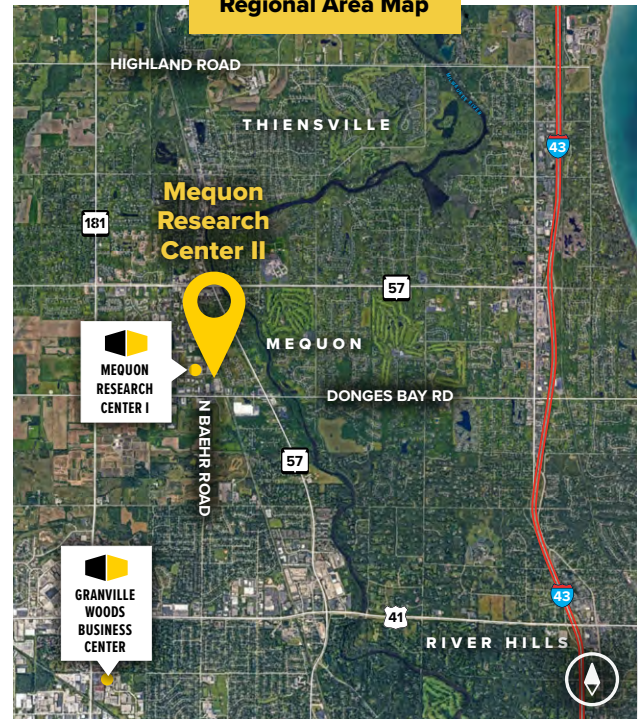
Flex/R&D/Office Buildings

10520 N. Baehr Road	48,400 SF
10650 N. Baehr Road	21,000 SF

Flex/R&D/Office Specifications

Suite Sizes	1,500 up to 48,400 SF
Ceiling Height	16 ft. clear minimum
Parking	220/110
Heat	Natural Gas
Roof	EPDM rubber
Exterior Walls	Masonry
Zoning	B-5

Regional Area Map





For more information on Mequon Research Center II, visit: sjpi.com/mequon2

Contact Us

For additional leasing information or to schedule a tour, contact:

Greg Fax
 Regional Partner, Wisconsin
gfax@sjpi.com | 262.524.0100

Wisconsin Regional Office:
 2000 Pewaukee Road | Suite A
 Waukesha, WI 53188

262.524.0100
SJPI.COM/WISCONSIN



About St. John Properties

St. John Properties Wisconsin owns and is developing more than 1.7 million square feet of commercial space across 16 business communities in Wisconsin.

St. John Properties, Inc. is a full-service real estate company headquartered in Baltimore, Maryland. The company owns, manages and has developed more than 22 million square feet of commercial real estate nationwide.

Connect with us [@stjohnprop](https://twitter.com/stjohnprop)



This information contained in this publication has been obtained from sources believed to be reliable. St. John Properties makes no guarantee, warranty or representation about this information. Any projections, opinions, assumptions or estimates used here are for example only and do not represent the current or future performance of the property. Interested parties should conduct an independent investigation to determine whether the property suits their needs. REV 05/22