



**Total SF Available:**  
18,187 SF

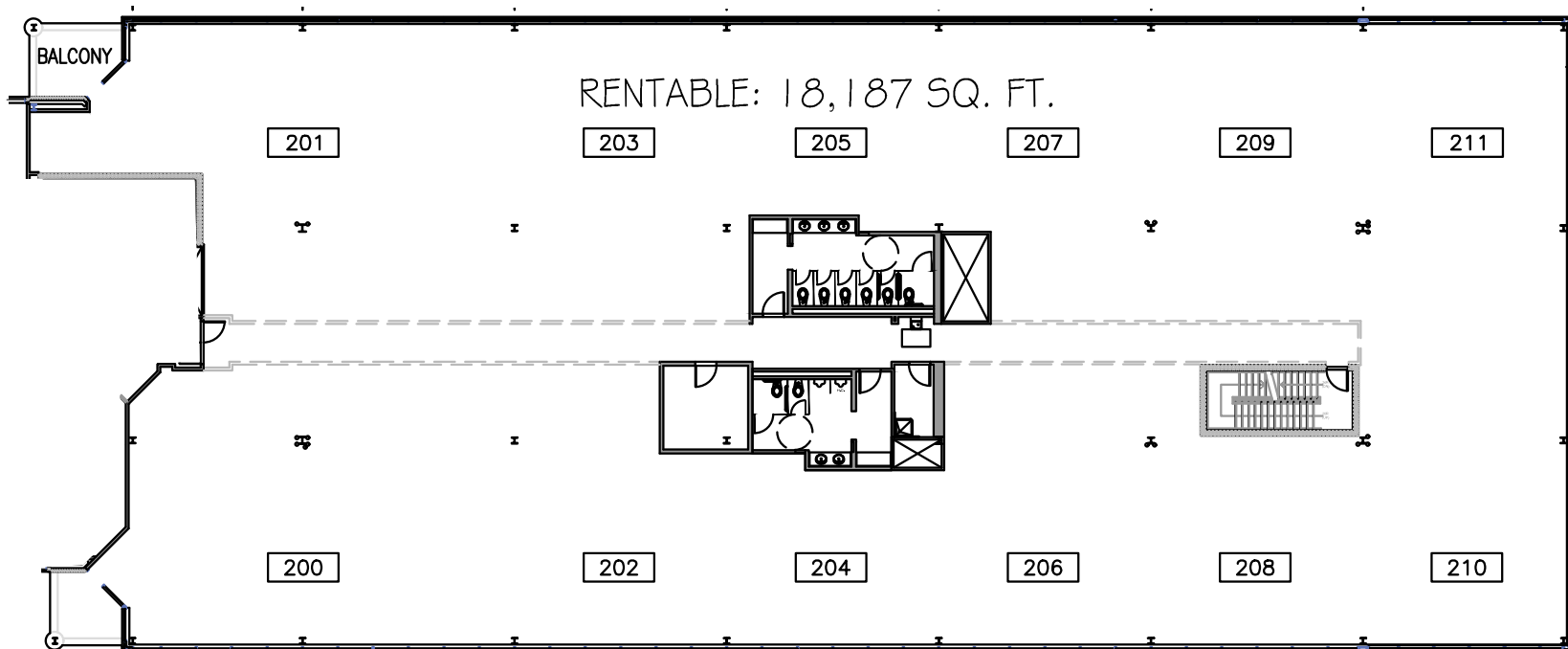
*New Class 'A' office with  
balconies (2) and restrooms*

**TAKE A VIRTUAL TOUR**

**KEY PLAN**  
NOT TO SCALE



***Note:** This space plan is subject to existing field conditions. This drawing is proprietary and the exclusive property of St. John Properties, Inc. Any duplications, distribution, or other unauthorized use is strictly prohibited.*





### Multi-Story Class 'A' Office Buildings

16701 Melford Boulevard	150,000 SF	
16901 Melford Boulevard	150,000 SF	<b>LEED SILVER</b>
17251 Melford Boulevard	27,526 SF	

### Multi-Story Class 'A' Office Specifications

LEED ( <i>on select buildings</i> )	Core & shell
Suite Sizes	1,252 up to 150,000 SF
Ceiling Height	9 ft. clear minimum
Offices	Built to suit
Elevator	Yes
Parking	5 spaces per 1,000 SF
HVAC	VAV with zone control
Zoning	EIA







#### Distances to:

Annapolis, MD (Downtown)	13 miles
Baltimore, MD (Downtown)	25 miles
BWI Airport	18 miles
Columbia, MD	25 miles
Interstate 495 (Capital Beltway)	8 miles
Interstate 695 (Baltimore Beltway)	20 miles
Regan National Airport	24 miles
Washington, D.C. (Downtown)	27 mile



**Scan with your mobile device to take a virtual tour, download floor plans and more!**

## Contact Us

For additional leasing information or to schedule a tour, contact:

#### OFFICE/FLEX SPACE:

##### Michael White

Leasing  
Representative

mwhite@sjpi.com  
410.369.1295

##### Matt Lenihan

Senior Vice President,  
Leasing

mleihan@sjpi.com  
410.369.1202

#### RETAIL SPACE:

##### Eric Llewellyn

Retail Leasing Representative

ellewellyn@sjpi.com  
443.464.1308

##### Bill Holzman

Vice President, Retail Leasing

bholzman@sjpi.com  
410.369.1240

#### Corporate Headquarters:

2560 Lord Baltimore Drive, Baltimore, MD 21244  
**410.788.0100 | SJPI.COM**

#### About St. John Properties

St. John Properties, Inc. is one of the nation's largest and most successful privately held commercial real estate firms. Founded in 1971, the vertically-integrated company develops, owns and manages office, flex/ research and development, warehouse, retail and residential space nationwide.

Connect with us @stjohnprop

