



410.788.0100 | SJPI.COM

Melford Town Center

16701 Melford Boulevard | Bowie, MD 20715

Suite 430

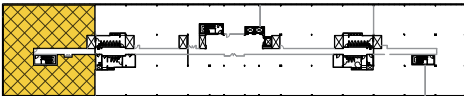


TAKE A VIRTUAL TOUR

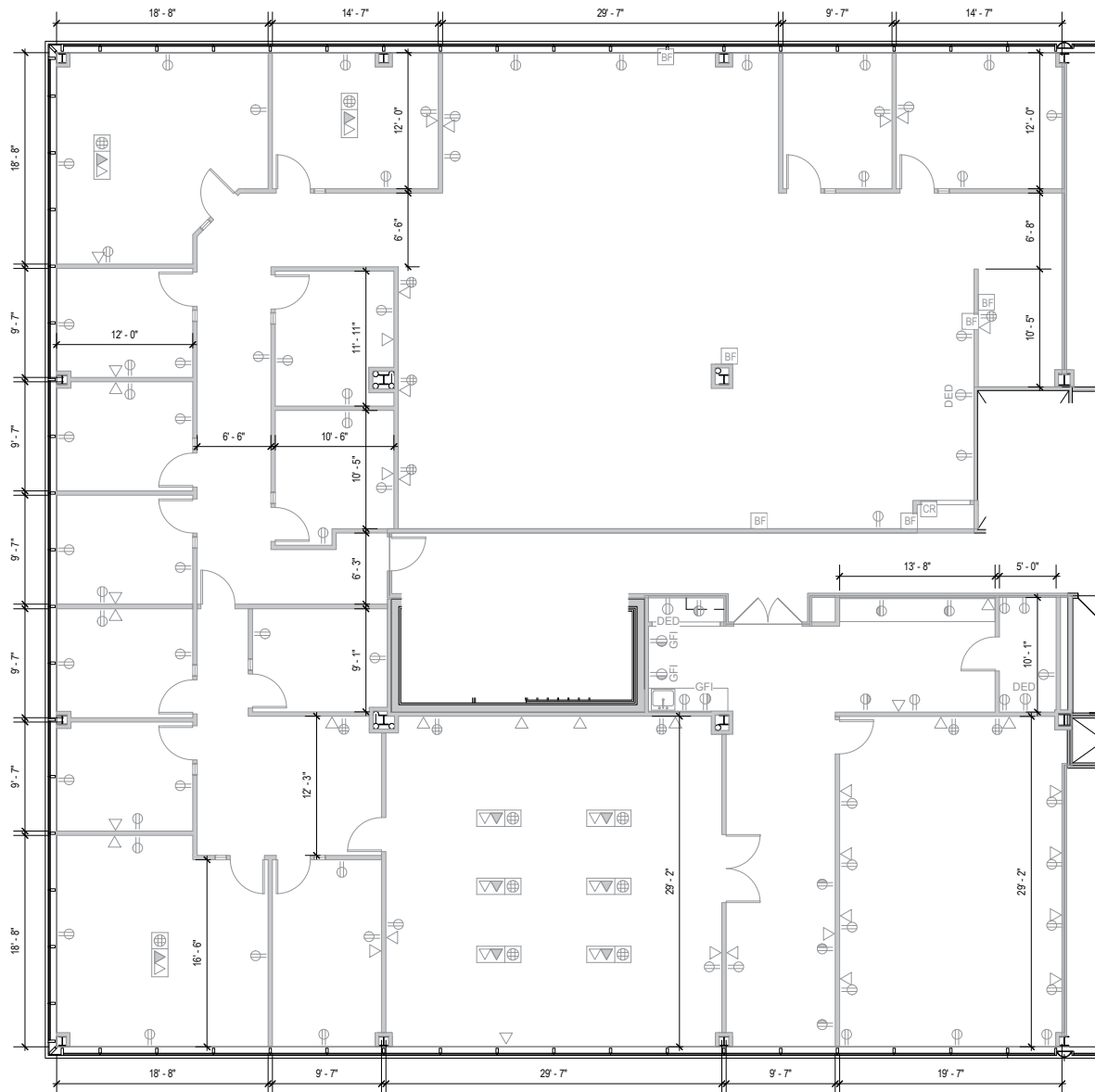
Total SF Available:
8,259 SF

*Efficient office layout, great
glass line throughout, top
floor corner suite*

KEY PLAN
NOT TO SCALE



Note: This space plan is subject to existing field conditions. This drawing is proprietary and the exclusive property of St. John Properties, Inc. Any duplications, distribution, or other unauthorized use is strictly prohibited.





Multi-Story Class 'A' Office Buildings

16701 Melford Boulevard	150,000 SF	
16901 Melford Boulevard	150,000 SF	LEED SILVER
17251 Melford Boulevard	27,526 SF	

Multi-Story Class 'A' Office Specifications

LEED (<i>on select buildings</i>)	Core & shell
Suite Sizes	1,252 up to 150,000 SF
Ceiling Height	9 ft. clear minimum
Offices	Built to suit
Elevator	Yes
Parking	5 spaces per 1,000 SF
HVAC	VAV with zone control
Zoning	EIA





Distances to:

Annapolis, MD (Downtown)	13 miles
Baltimore, MD (Downtown)	25 miles
BWI Airport	18 miles
Columbia, MD	25 miles
Interstate 495 (Capital Beltway)	8 miles
Interstate 695 (Baltimore Beltway)	20 miles
Regan National Airport	24 miles
Washington, D.C. (Downtown)	27 mile



Scan with your mobile device to take a virtual tour, download floor plans and more!

Contact Us

For additional leasing information or to schedule a tour, contact:

OFFICE/FLEX SPACE:

Bill Jautze

Leasing Representative

bjautze@sjpi.com
410.369.1213

Matt Lenihan

Vice President, Leasing

mleihan@sjpi.com
410.369.1202

RETAIL SPACE:

Bill Holzman

Vice President, Retail Leasing

bholzman@sjpi.com
410.369.1240

Eric Llewellyn

Retail Leasing Representative

ellewellyn@sjpi.com
443.464.1308

Corporate Headquarters:

2560 Lord Baltimore Drive, Baltimore, MD 21244
410.788.0100 | SJPI.COM

About St. John Properties

St. John Properties, Inc. is a full-service real estate company headquartered in Baltimore, Maryland. The company owns, manages and has developed more than 22 million square feet of commercial real estate, including office, flex/R&D, warehouse, retail and residential space.

Connect with us @stjohnprop



MD | CO | LA | NV | PA | UT | VA | WI

This information contained in this publication has been obtained from sources believed to be reliable. St. John Properties makes no guarantee, warranty or representation about this information. Any projections, opinions, assumptions or estimates used here are for example only and do not represent the current or future performance of the property. Interested parties should conduct an independent investigation to determine whether the property suits their needs.
REV 12/21