

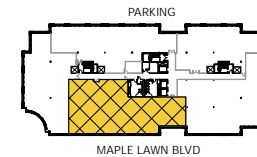
Maple Lawn | Multi-Story Office
8171 Maple Lawn Boulevard | Fulton, MD 20759
Suite 300 | Third Floor



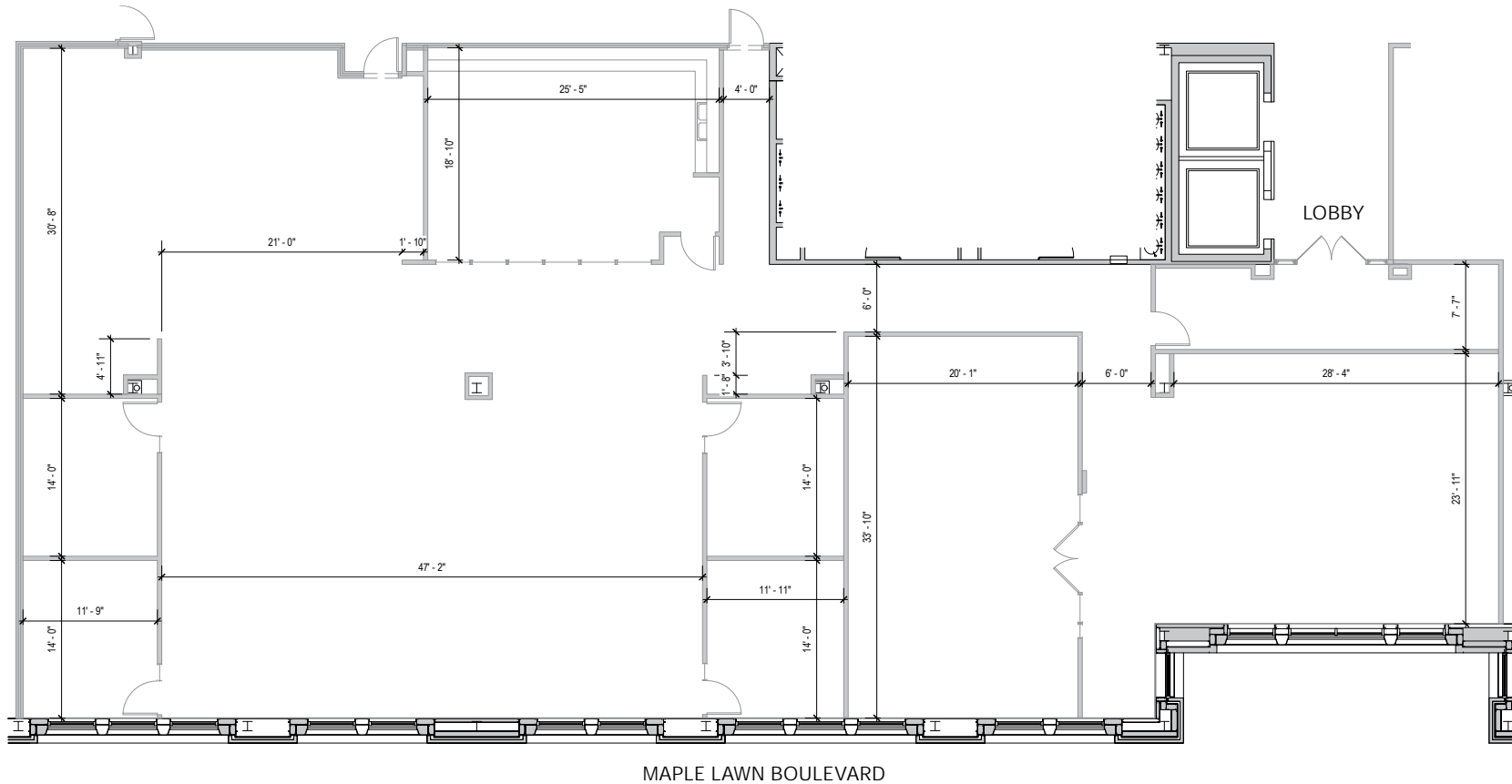
Total SF Available:
7,104 SF

*Office-lobby entrance, (4) private offices,
large break room, existing conference
room, ample open office space*

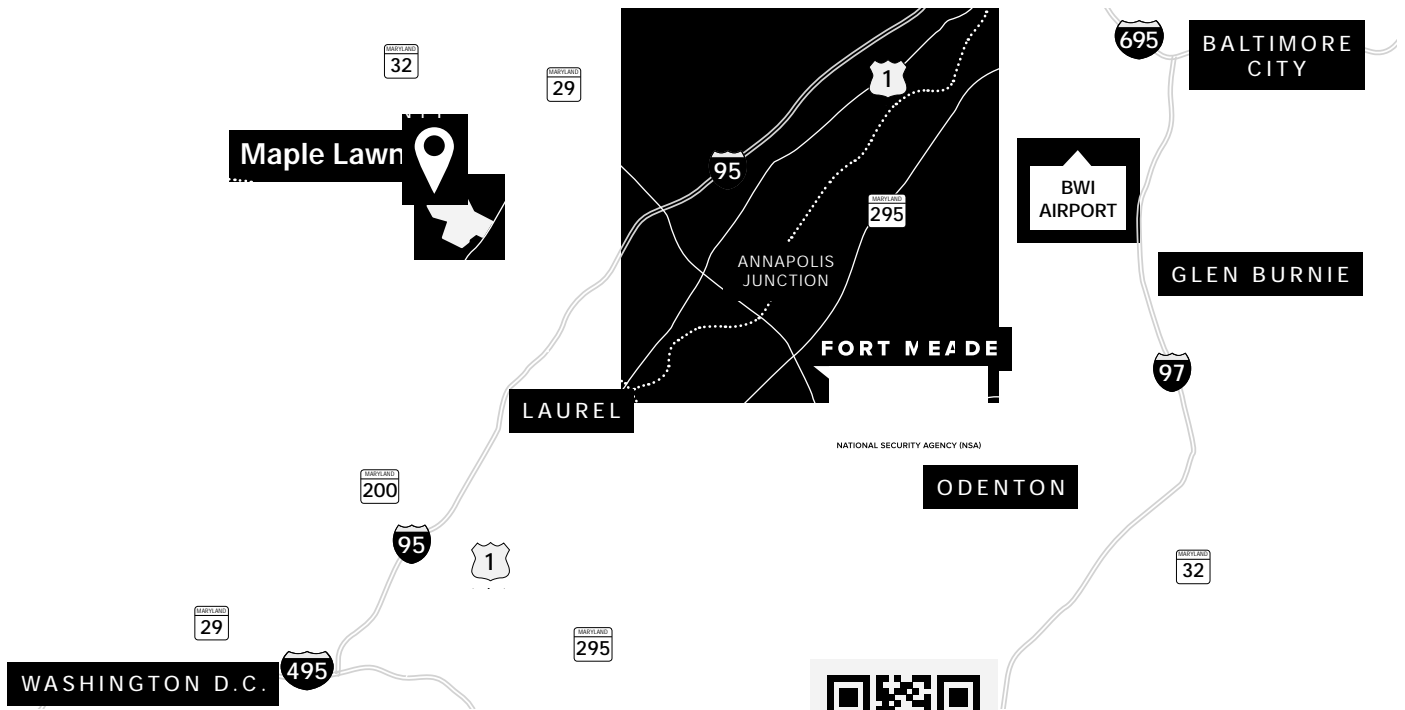
KEY PLAN
NOT TO SCALE



TAKE A VIRTUAL TOUR

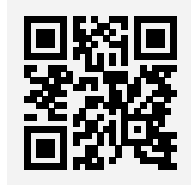


Note: This space plan is subject to existing field conditions. This drawing is proprietary and the exclusive property of St. John Properties, Inc. Any duplications, distribution, or other unauthorized use is strictly prohibited.



Distances to:

- AMTRAK/Marc Station at BWI Airport 20 miles
- Annapolis, MD (Downtown) 31 miles
- Baltimore, MD (Downtown) 22 miles
- BWI Airport 19 miles
- Columbia, MD (Downtown) 6 miles
- Interstate 95 3 miles
- Interstate 495 (Capital Beltway) 10 miles
- Interstate 695 (Baltimore Beltway) 16 miles
- Intercounty Connector (ICC)/MD 200 4.5 miles
- JHU Applied Physics Laboratory 1 mile



Scan with your mobile device to take a virtual tour, download our plans and more!

Contact Us

For additional leasing information or to schedule a tour, contact:

Bill Jautze
*Assistant Vice President,
 Leasing*
 bjautze@sjpi.com
 410.369.1213

Matt Lenihan
*Senior Vice President,
 Leasing*
 mlenihan@sjpi.com
 410.369.1202

Corporate Headquarters:
 2560 Lord Baltimore Drive, Baltimore, MD 21244
 410.788.0100 | SJPI.COM

About St. John Properties

St. John Properties, Inc. is a full-service real estate company headquartered in Baltimore, Maryland. The company owns, manages and has developed more than 22 million square feet of commercial real estate, including office, ex/R&D, warehouse, retail and residential space.

Connect with us @stjohnprop



Master Developer: **GREENEBAUM ENTERPRISES**



This information contained in this publication has been obtained from sources believed to be reliable. St. John Properties makes no guarantee, warranty or representation about this information. Any projections, opinions, assumptions or estimates used here are for example only and do not represent the current or future performance of the property. Interested parties should conduct an independent investigation to determine whether the property suits their needs. REV 07/22