

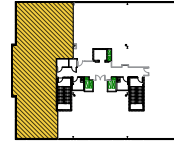


**Total SF Available:**  
3,153 SF

*LEED Gold, class 'A' medical  
office space*

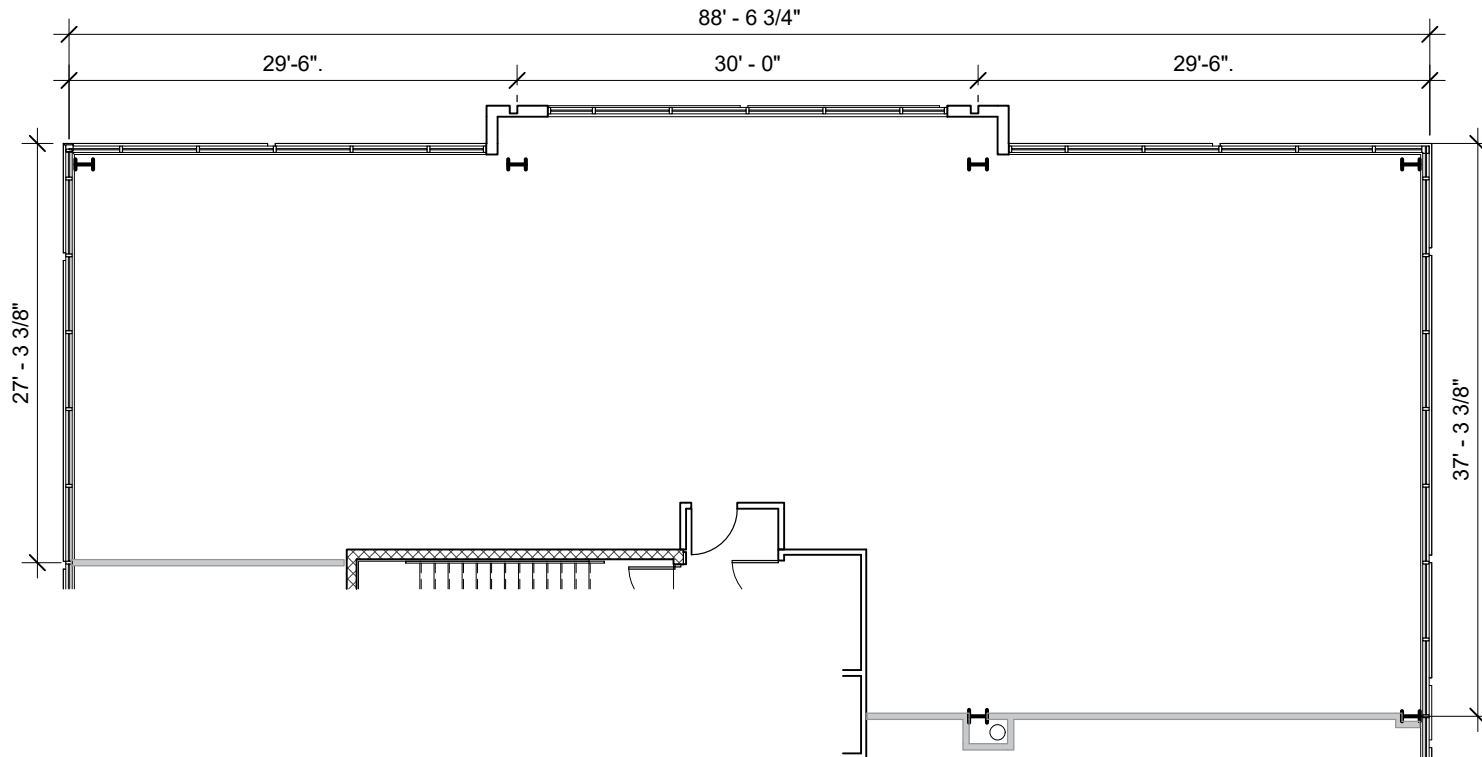
**KEY PLAN**  
NOT TO SCALE

LOADING ZONE



PARKING

**Note:** This space plan is subject to existing field conditions. This drawing is proprietary and the exclusive property of St. John Properties, Inc. Any duplications, distribution, or other unauthorized use is strictly prohibited.





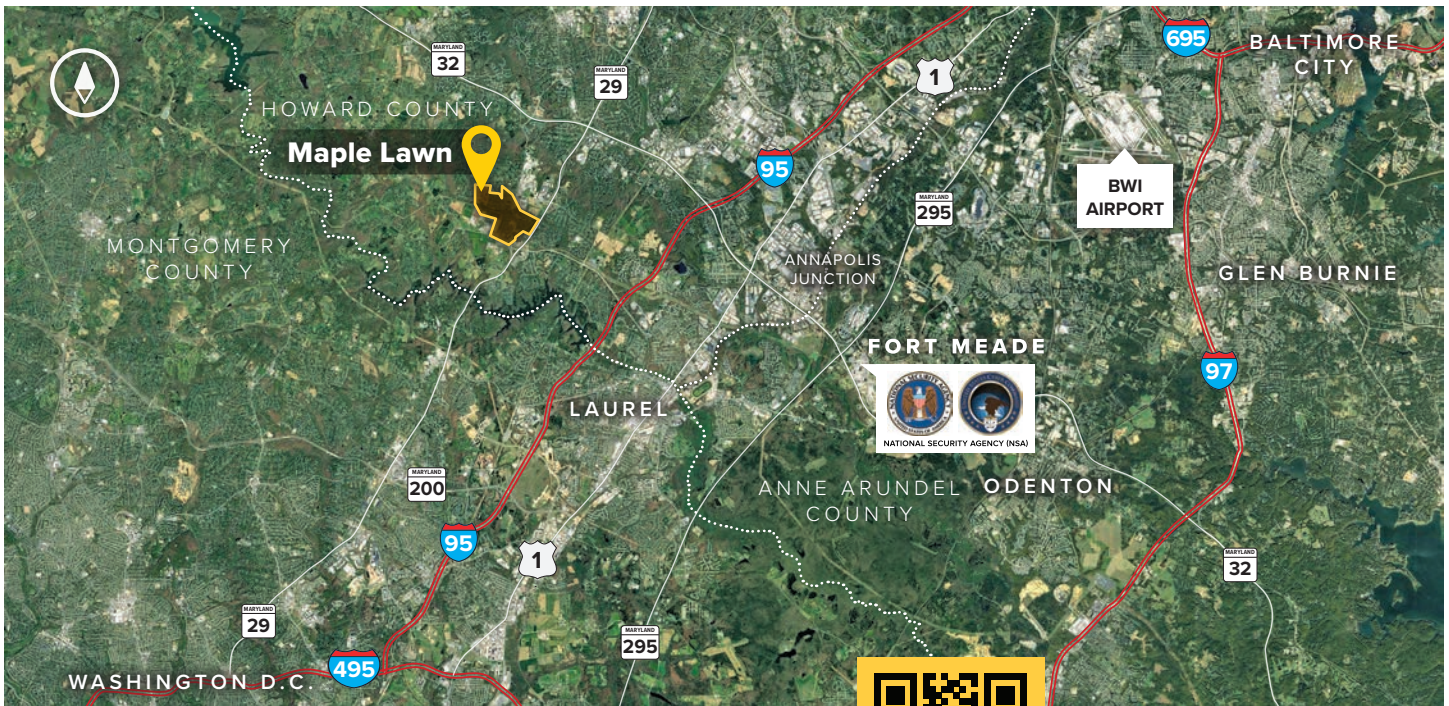
# Westside Medical Pavilion

11810 W. Market Place • Three-Story Class ‘A’ Medical Office • 29,700 Sq. Ft.

11810 West Market Place	
LEED	Gold   Core & shell
Suite Sizes	2,500 up to 29,700 SF
Office	Build to suit
Parking	5 spaces per 1,000 SF
Elevator	Yes
Accessibility	Automatic entry doors
HVAC	Gas, VAV with zone control
Lease Type	Full Service







#### Distances to:

AMTRAK/Marc Station at BWI Airport .....	20 miles
Annapolis, MD (Downtown) .....	31 miles
Baltimore, MD (Downtown) .....	22 miles
BWI Airport .....	19 miles
Columbia, MD (Downtown) .....	6 miles
Interstate 95 .....	3 miles
Interstate 495 (Capital Beltway) .....	10 miles
Interstate 695 (Baltimore Beltway) .....	16 miles
Intercounty Connector (ICC)/MD 200 .....	4.5 miles
JHU Applied Physics Laboratory .....	1 mile



Scan with your mobile device to take a virtual tour, download floor plans and more!

## Contact Us

For additional leasing information or to schedule a tour, contact:

#### Bill Jautze

Assistant Vice President,  
Leasing

[bjautze@sjpi.com](mailto:bjautze@sjpi.com)  
410.369.1213

#### Matt Lenihan

Senior Vice President,  
Leasing

[milenihan@sjpi.com](mailto:milenihan@sjpi.com)  
410.369.1202

#### Corporate Headquarters:

2560 Lord Baltimore Drive, Baltimore, MD 21244  
**410.788.0100 | SJPI.COM**

#### About St. John Properties

St. John Properties, Inc. is one of the nation's largest and most successful privately held commercial real estate firms. Founded in 1971, the vertically-integrated company develops, owns and manages office, flex/research and development, warehouse, retail and residential space nationwide.

Connect with us [@stjohnprop](https://twitter.com/stjohnprop)



Master Developer:



This information contained in this publication has been obtained from sources believed to be reliable. St. John Properties makes no guarantee, warranty or representation about this information. Any projections, opinions, assumptions or estimates used here are for example only and do not represent the current or future performance of the property. Interested parties should conduct an independent investigation to determine whether the property suits their needs. REV 01/23