

Maple Lawn

8171 Maple Lawn Boulevard | Fulton, MD 20759
Suite 310

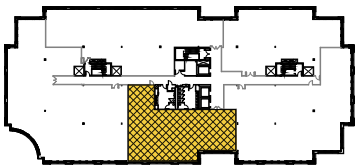


Total SF Available:
4,061 SF

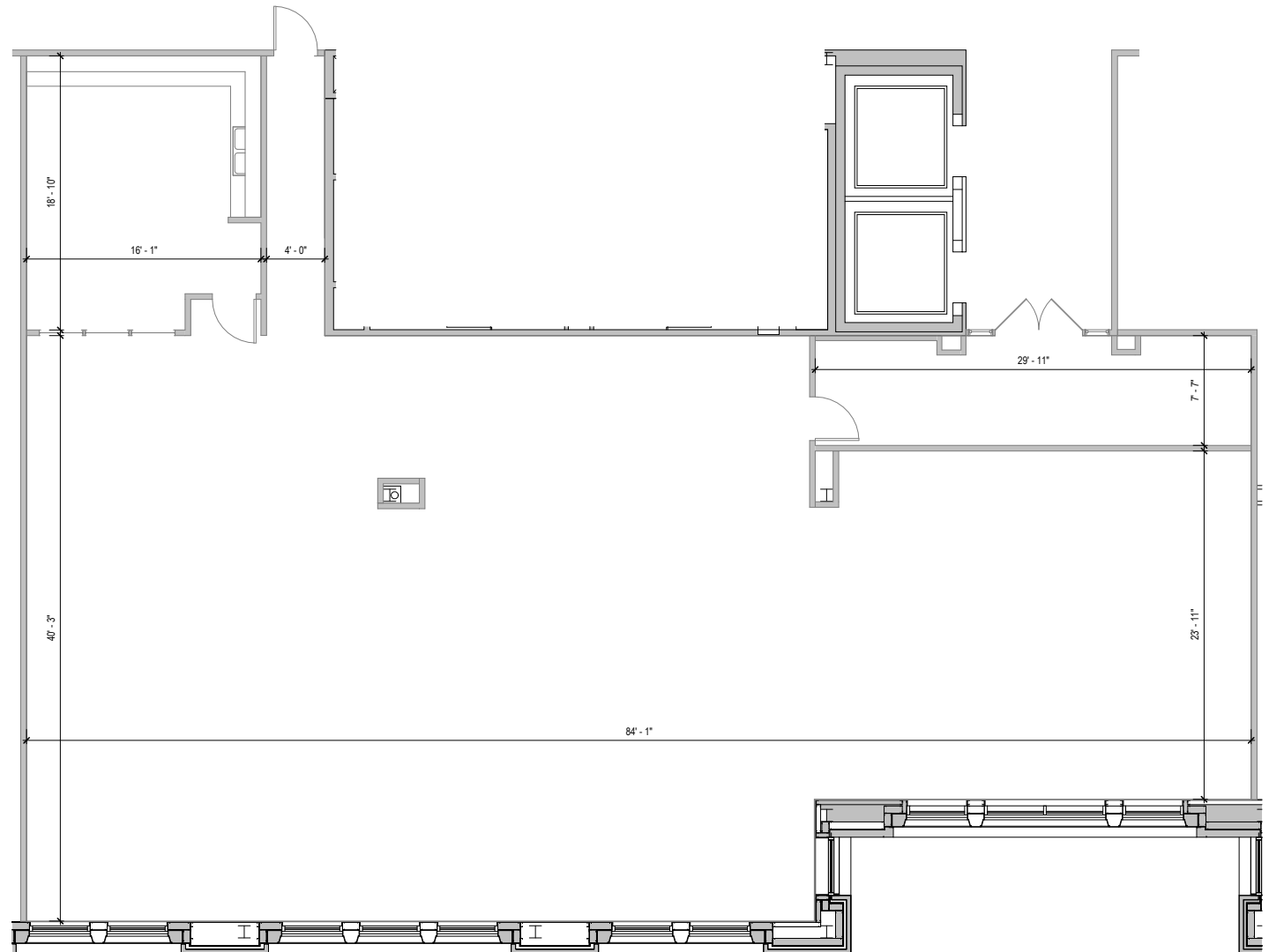
*Open office space with great
glass line, and kitchenette*

**CLICK TO VIEW
VIRTUAL TOUR**

KEY PLAN NOT TO SCALE



Note: This space plan is subject to existing field conditions. This drawing is proprietary and the exclusive property of St. John Properties, Inc. Any duplications, distribution, or other unauthorized use is strictly prohibited.





8171 Maple Lawn Boulevard

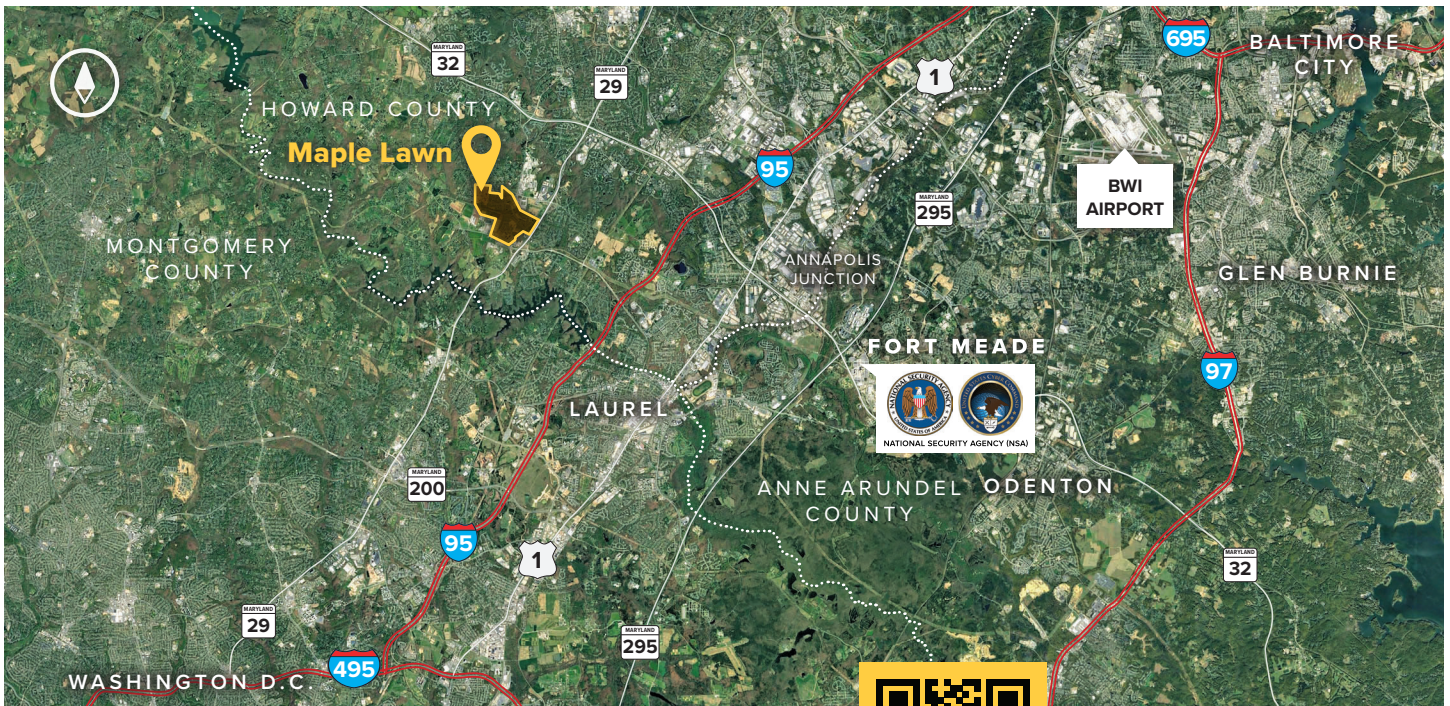
Three-Story Class 'A' Office • 84,721 Sq. Ft.

NEWLY RENOVATED
INTERIOR LOBBY



8171 Maple Lawn Boulevard	
Suite Sizes	2,500 up to 84,721 SF
Office	Build to suit
Parking	4 spaces per 1,000 SF
Elevator	Yes
HVAC	Gas, VAV with zone control
Lease Type	Full Service





Distances to:

AMTRAK/Marc Station at BWI Airport	20 miles
Baltimore, MD (Downtown)	22 miles
BWI Airport	19 miles
Columbia, MD (Downtown)	6 miles
Interstate 95	3 miles
Interstate 495 (Capital Beltway)	10 miles
Interstate 695 (Baltimore Beltway)	16 miles
Intercounty Connector (ICC)/MD 200	4.5 miles
JHU Applied Physics Laboratory	1 mile
MD Route 29	1 mile
MD 295 (Baltimore-Washington Parkway)	8 miles
MD Route 32	2.7 miles
NSA/Fort Meade	9 miles



Scan with your mobile device to take a virtual tour, download floor plans and more!

Contact Us

For additional information or to schedule a tour, contact:

Bill Jautze

Assistant Vice President,
Leasing

bjautze@sjpi.com
410.369.1213

Matt Lenihan

Senior Vice President,
Leasing

mlenihan@sjpi.com
410.369.1202

Corporate Headquarters:

2560 Lord Baltimore Drive, Baltimore, MD 21244
410.788.0100 | SJPI.COM

About St. John Properties

St. John Properties, Inc. is one of the nation's largest and most successful privately held commercial real estate firms. Founded in 1971, the vertically-integrated company develops, owns and manages office, flex/research and development, warehouse, retail and residential space nationwide.

Connect with us [@stjohnprop](https://www.instagram.com/stjohnprop)



Master Developer:



MD • CO • FL • LA • NC • NV • PA • TX • UT • VA • WI



This information contained in this publication has been obtained from sources believed to be reliable. St. John Properties makes no guarantee, warranty or representation about this information. Any projections, opinions, assumptions or estimates used here are for example only and do not represent the current or future performance of the property. Interested parties should conduct an independent investigation to determine whether the property suits their needs. REV 03/24