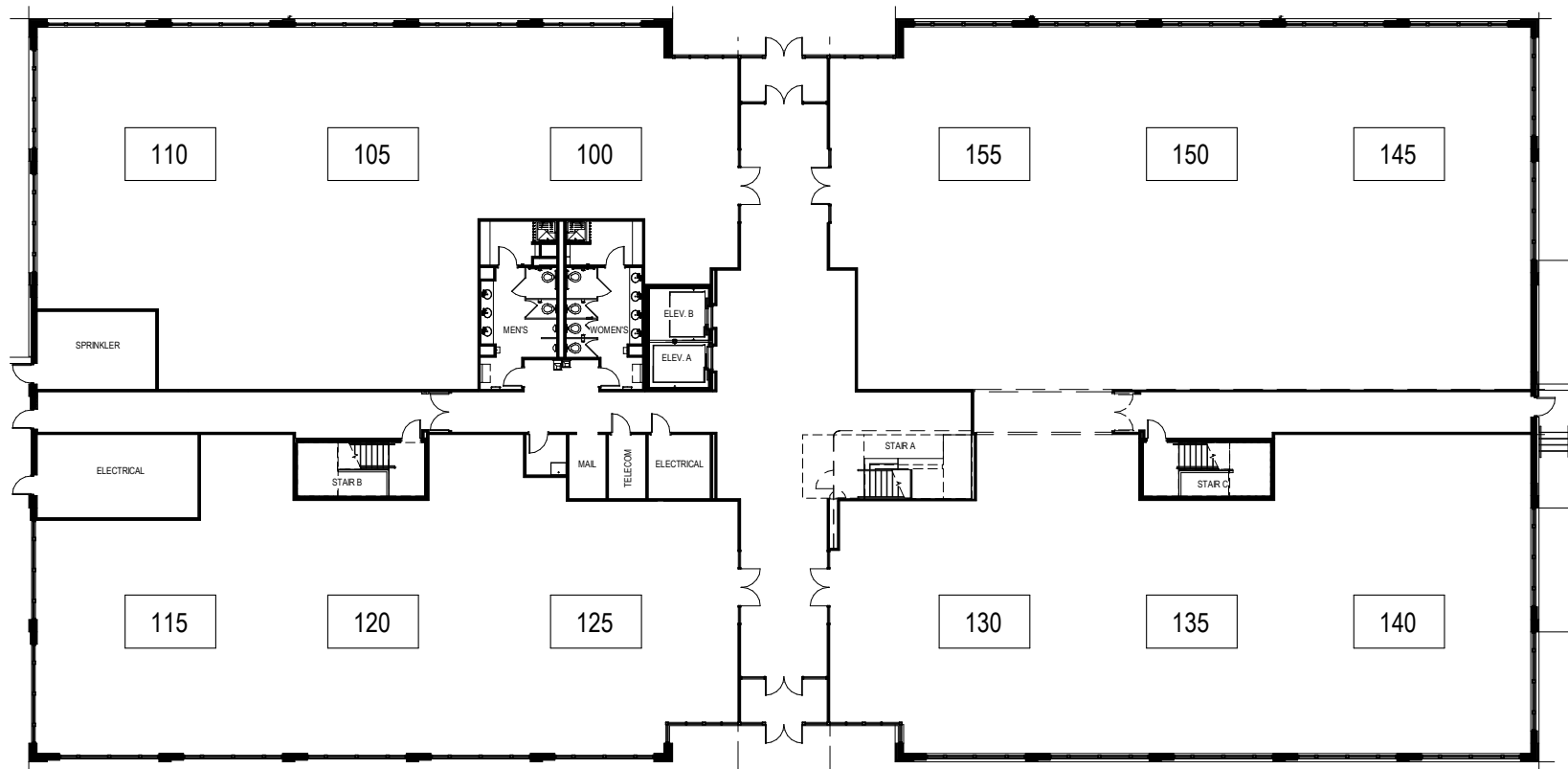




Total SF Available:
Up to 25,115 SF

New LEED Designed Class 'A' Office

Note: This space plan is subject to existing field conditions. This drawing is proprietary and the exclusive property of St. John Properties, Inc. Any duplications, distribution, or other unauthorized use is strictly prohibited.



MAPLE LAWN BLVD



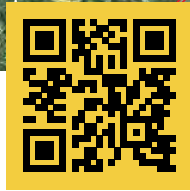
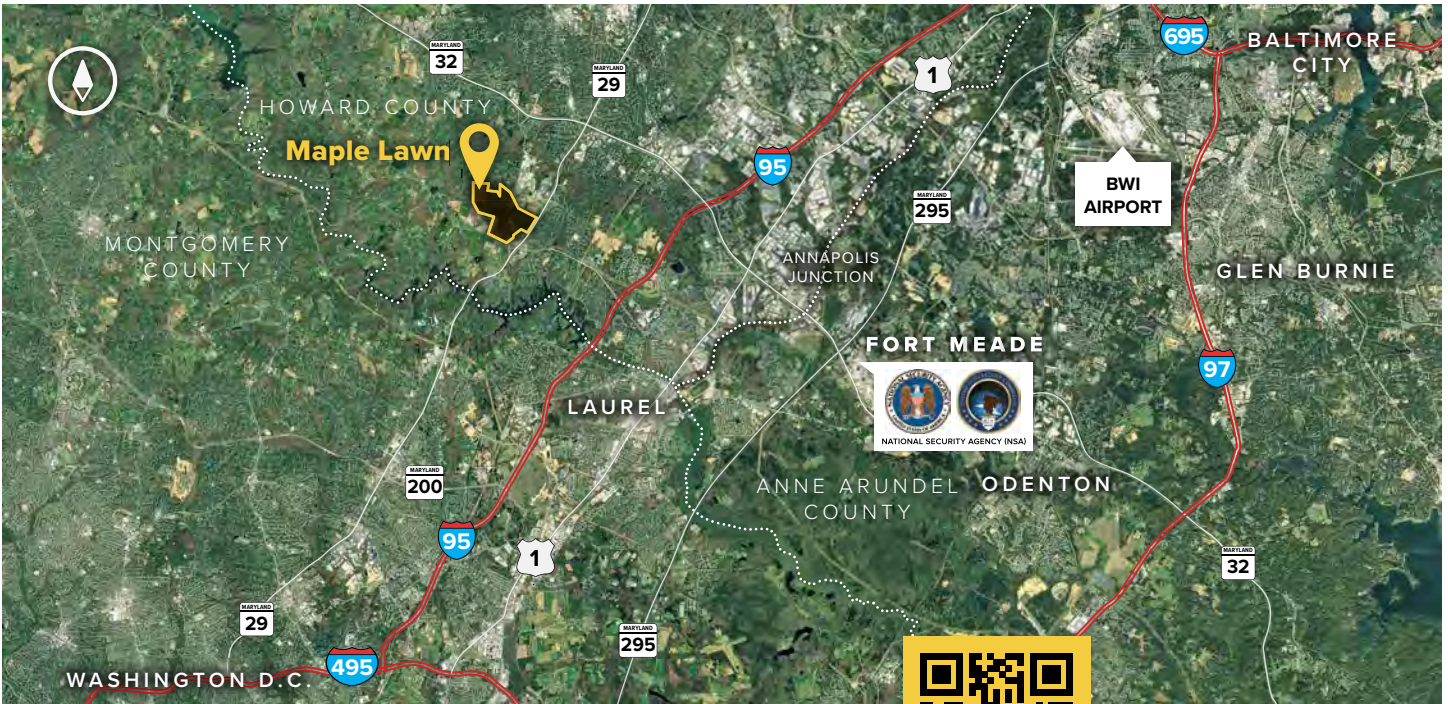
8150 Maple Lawn Boulevard

Future Three-Story Class 'A' Office • 86,143 Sq. Ft.

Coming Soon! New LEED
Designed Class 'A' Office
DELIVERING Q4 2023

| 8150 Maple Lawn Boulevard | |
|---------------------------|----------------------------|
| LEED | Designed |
| Suite Sizes | Up to 87,200 SF |
| Office | Build to suit |
| Parking | 4 spaces per 1,000 SF |
| Elevator | Yes |
| HVAC | Gas, VAV with zone control |
| Lease Type | Full Service |





Scan with your mobile device to take a virtual tour, download floor plans and more!

Distances to:

- AMTRAK/Marc Station at BWI Airport 20 miles
- Baltimore, MD (Downtown) 22 miles
- BWI Airport 19 miles
- Columbia, MD (Downtown) 6 miles
- Interstate 95 3 miles
- Interstate 495 (Capital Beltway) 10 miles
- Interstate 695 (Baltimore Beltway) 16 miles
- Intercounty Connector (ICC)/MD 200 4.5 miles
- JHU Applied Physics Laboratory 1 mile
- MD Route 29 1 mile
- MD 295 (Baltimore-Washington Parkway) 8 miles
- MD Route 32 2.7 miles
- NSA/Fort Meade 9 miles

About St. John Properties

St. John Properties, Inc. is one of the nation's largest and most successful privately held commercial real estate firms. Founded in 1971, the vertically-integrated company develops, owns and manages office, flex/ research and development, warehouse, retail and residential space nationwide.

Connect with us @stjohnprop



Contact Us

For additional information or to schedule a tour, contact:

Bill Jautze
 Assistant Vice President,
 Leasing
 bjautze@sjpi.com
 410.369.1213

Matt Lenihan
 Senior Vice President,
 Leasing
 mlenihan@sjpi.com
 410.369.1202

Corporate Headquarters:
 2560 Lord Baltimore Drive, Baltimore, MD 21244
410.788.0100 | SJPI.COM



Master Developer: **GREENBAUM ENTERPRISES**



This information contained in this publication has been obtained from sources believed to be reliable. St. John Properties makes no guarantee, warranty or representation about this information. Any projections, opinions, assumptions or estimates used here are for example only and do not represent the current or future performance of the property. Interested parties should conduct an independent investigation to determine whether the property suits their needs. REV 06/23