

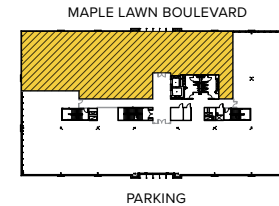
Maple Lawn Multi-Story Office
8120 Maple Lawn Boulevard | Fulton, MD 20759
Suites 200-215 & 265 | Second Floor



Total SF Available:
9,057 SF

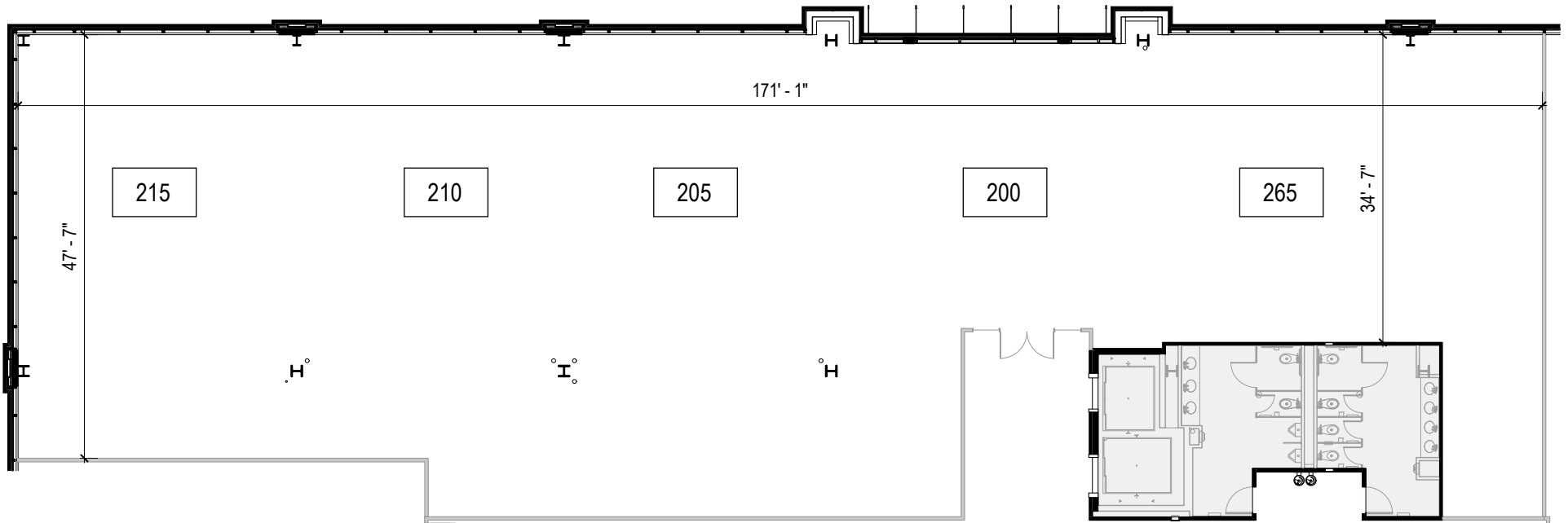
NEW! Build to suit shell space

KEY PLAN
NOT TO SCALE



**CLICK TO VIEW
VIRTUAL TOUR**

Note: This space plan is subject to existing field conditions. This drawing is proprietary and the exclusive property of St. John Properties, Inc. Any duplications, distribution, or other unauthorized use is strictly prohibited.



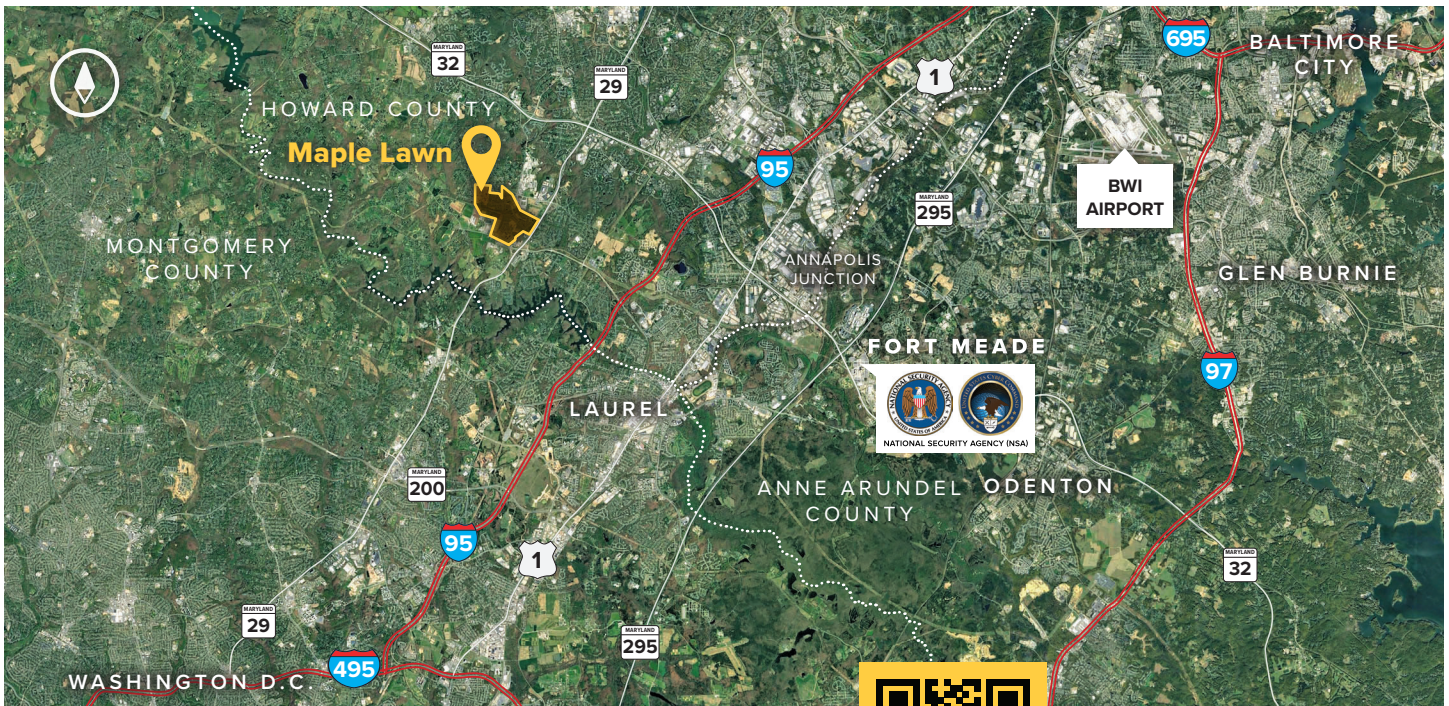


8120 Maple Lawn Boulevard

Four-Story Class 'A' Office • 103,755 Sq. Ft.

8120 Maple Lawn Boulevard	
LEED	Gold Core & shell
Suite Sizes	2,500 up to 103,755 SF
Office	Build to suit
Parking	4 spaces per 1,000 SF
Elevator	Yes
HVAC	Gas, VAV with zone control
Lease Type	Full Service





Distances to:

AMTRAK/Marc Station at BWI Airport	20 miles
Baltimore, MD (Downtown)	22 miles
BWI Airport	19 miles
Columbia, MD (Downtown)	6 miles
Interstate 95	3 miles
Interstate 495 (Capital Beltway)	10 miles
Interstate 695 (Baltimore Beltway)	16 miles
Intercounty Connector (ICC)/MD 200	4.5 miles
JHU Applied Physics Laboratory	1 mile
MD Route 29	1 mile
MD 295 (Baltimore-Washington Parkway)	8 miles
MD Route 32	2.7 miles
NSA/Fort Meade	9 miles



Scan with your mobile device to take a virtual tour, download floor plans and more!

Contact Us

For additional information or to schedule a tour, contact:

Bill Jautze

Assistant Vice President,
Leasing

bjautze@sjpi.com
410.369.1213

Matt Lenihan

Senior Vice President,
Leasing

mlenihan@sjpi.com
410.369.1202

Corporate Headquarters:

2560 Lord Baltimore Drive, Baltimore, MD 21244
410.788.0100 | SJPI.COM

About St. John Properties

St. John Properties, Inc. is one of the nation's largest and most successful privately held commercial real estate firms. Founded in 1971, the vertically-integrated company develops, owns and manages office, flex/research and development, warehouse, retail and residential space nationwide.

Connect with us @stjohnprop



Master Developer:



MD • CO • FL • LA • NC • NV • PA • TX • UT • VA • WI

