



# Madison East Business Center

S Biltmore Lane at Eastpark Boulevard

Madison, WI 53718



NAIOP  
COMMERCIAL REAL ESTATE  
DEVELOPMENT ASSOCIATION  
NATIONAL  
DEVELOPER  
OF THE YEAR  
— 2018 —

262.524.0100 | [SJPI.COM/WISCONSIN](http://SJPI.COM/WISCONSIN)

# About Madison East Business Center

Madison East Business Center is located within American Center Business Park at the intersection of Interstate 90/94/39 and U.S. 151. The Dane County business community includes more than 111,000 square feet of office space in a campus-style setting. Interstate 90/94/39 connects the business center to the rest of the Madison Metro area, including Chicago, Milwaukee, and Minneapolis/St. Paul, while U.S. 151 links Madison

## Single-Story Office Buildings

4602 S Biltmore Lane	26,950 SF
4610 S Biltmore Lane	14,310 SF
4618–4666 S Biltmore Lane	39,290 SF
5202 Eastpark Boulevard	30,525 SF

## Building Specifications

Parking	4.2 per 1,000 SF
Heat	Natural Gas
Roof	EPDM rubber
Construction	Masonry
Zoning	SEC

## LOCAL AMENITIES



For more information on Madison East Business Center, visit: [sjpi.com/madisoneast](http://sjpi.com/madisoneast)





# Madison East Business Center | Site Plan



4618-4666  
S BILTMORE LANE  
39,290 SF

4610 S BILTMORE LN  
14,310 SF

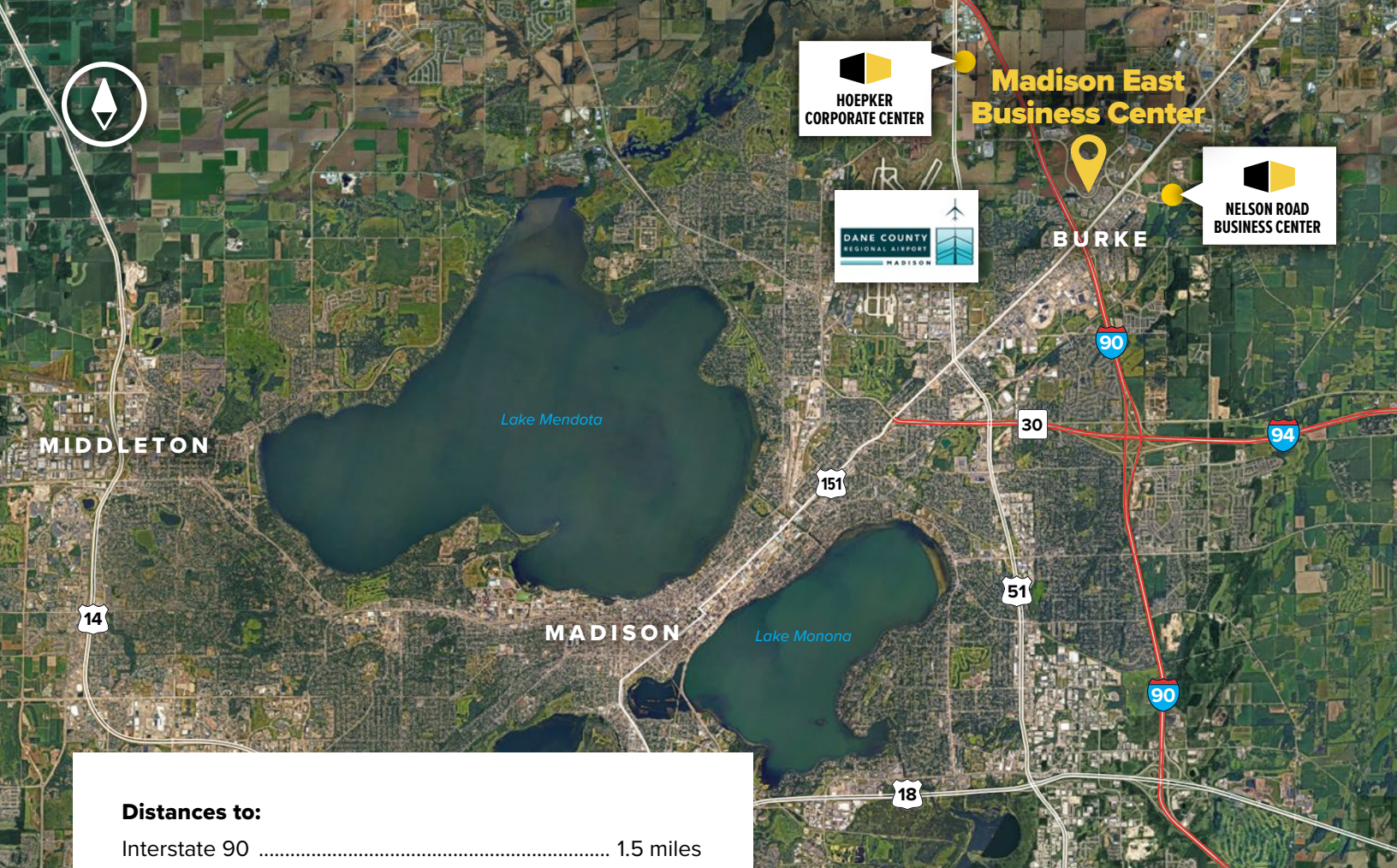
4602 S BILTMORE LANE  
26,950 SF

5202 S BILTMORE LANE  
30,525 SF

S BILTMORE LANE

EASTPARK BLVD





**HOEPKER  
CORPORATE CENTER**

**Madison East  
Business Center**

**NELSON ROAD  
BUSINESS CENTER**

**DANE COUNTY  
REGIONAL AIRPORT  
MADISON**

**BURKE**

**MIDDLETON**

Lake Mendota

**MADISON**

Lake Monona

**Distances to:**

Interstate 90 .....	1.5 miles
Interstate 94 .....	4 miles
Dane County Regional Airport .....	6 miles
Madison, WI .....	9 miles
Middleton, WI .....	18 miles
Milwaukee, WI .....	75.5 miles
Chicago, IL .....	147 miles
St. Paul, MN .....	253 miles



Scan with your mobile device to take a virtual tour, download floor plans and more!

# Contact Us

**Greg Fax**  
Regional Partner, Wisconsin  
gfx@smpi.com | 262.524.0100

**Wisconsin Regional Office:**  
2000 Pewaukee Road | Suite A  
Waukesha, WI 53188  
**262.524.0100 | SJPI.COM/WISCONSIN**

## About St. John Properties

St. John Properties, Inc. is one of the nation's largest and most successful privately held commercial real estate firms. Founded in 1971, the vertically-integrated company develops, owns and manages office, flex/research and development, warehouse, retail and residential space nationwide.

Connect with us @stjohnprop



*This information contained in this publication has been obtained from sources believed to be reliable. St. John Properties makes no guarantee, warranty or representation about this information. Any projections, opinions, assumptions or estimates used here are for example only and do not represent the current or future performance of the property. Interested parties should conduct an independent investigation to determine whether the property suits their needs. REV 11/24*