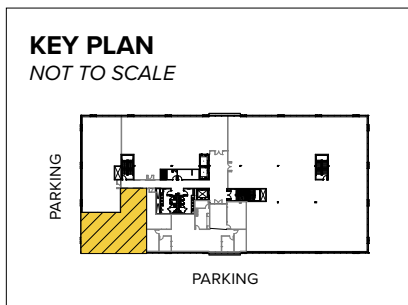


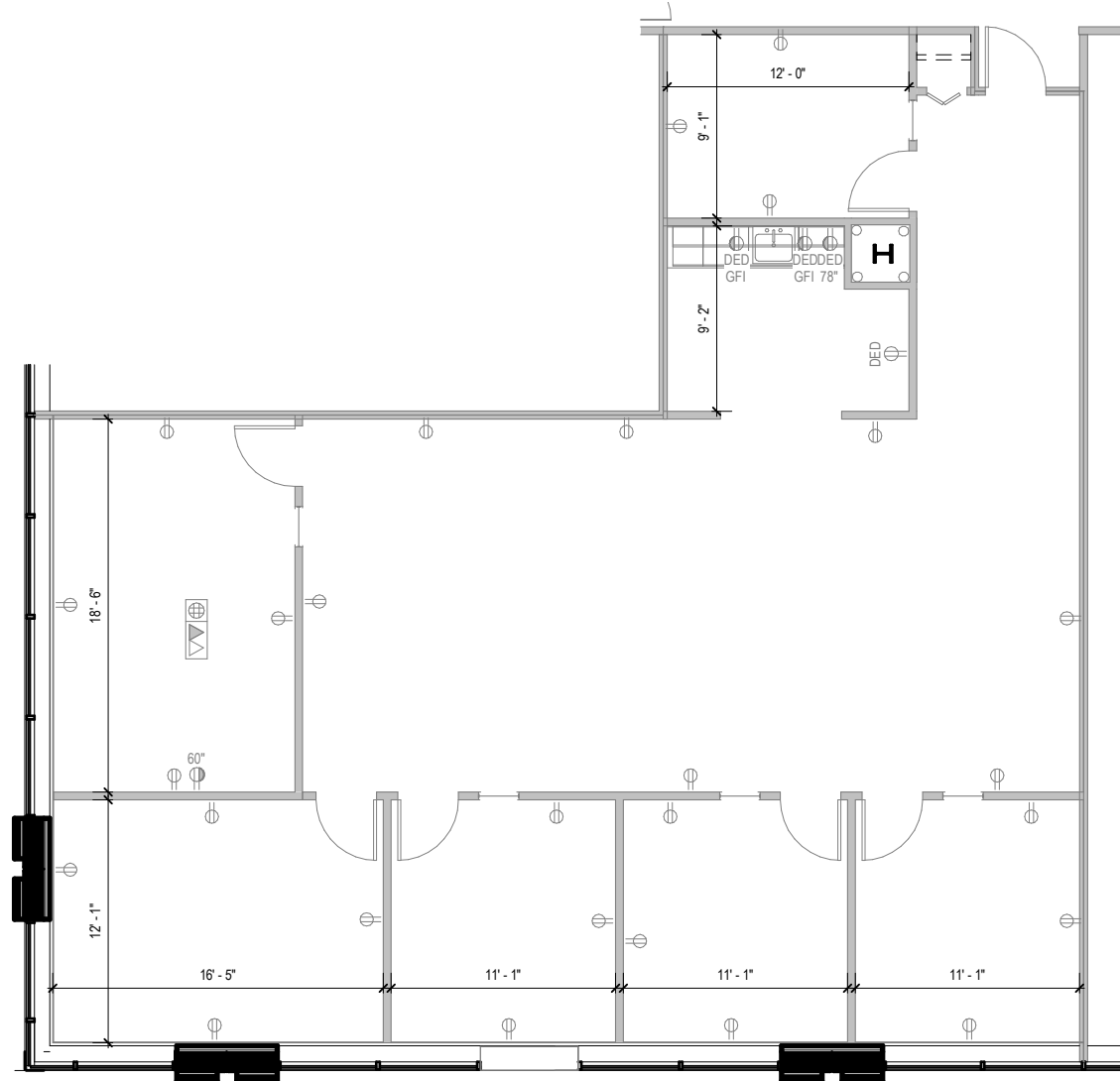


Total SF Available:
2,342 SF

*Multi-story Class 'A' office,
shell space, build to suit*



Note: This space plan is subject to existing field conditions. This drawing is proprietary and the exclusive property of St. John Properties, Inc. Any duplications, distribution, or other unauthorized use is strictly prohibited.





231 Najoles Road

I-97 Business Park
 Millersville, MD 21108

About the Building

231 Najoles Road is a 126,500 square foot LEED Gold certified five-story Class 'A' Office building located within I-97 Business Park, a 552,160 square foot business community. The building has an on-site coffee house located on the first floor.



231 Najoles Road		126,500 SF
Five-Story Class 'A' Office Specifications		
LEED	Gold Core & shell	
Suite Sizes	Up to 126,500 SF	
Elevator	Yes	
Office	Built to suit	
Parking	5 spaces per 1,000 SF	
HVAC	Gas, VAV with zone control	
Zoning	W1	
First Floor Retail		
Suite 135	The Big Bean	1,762 SF



For more information on 231 Najoles Road, visit: sjpi.com/i97

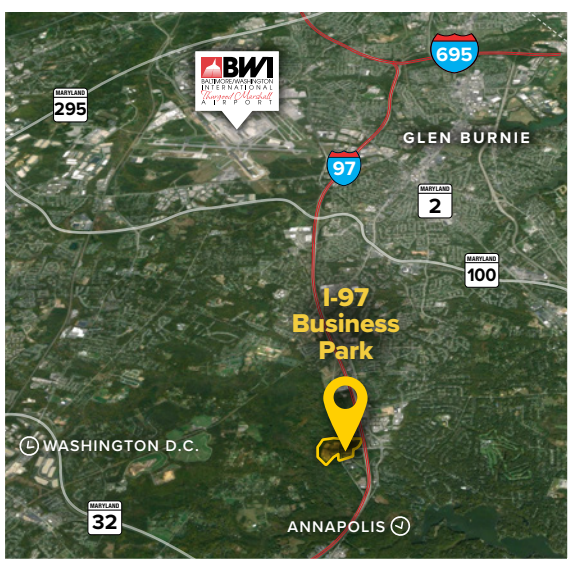
Contact Us

For additional leasing information or to schedule a tour, contact:

OFFICE SPACE:
Michael Tait
 Leasing Representative
 mtait@sjpi.com
 443.464.1315

RETAIL SPACE:
Eric Llewellyn
 Retail Leasing Representative
 ellewellyn@sjpi.com
 443.464.1308

Corporate Headquarters:
 2560 Lord Baltimore Drive | Baltimore, MD 21244
410.788.0100 | SJPI.COM



Demographics			
	1 Mile	3 Miles	5 Miles
Population	3,844	50,506	130,962
Avg. Household Income	\$269,909	\$150,456	\$142,146



This information contained in this publication has been obtained from sources believed to be reliable. St. John Properties makes no guarantee, warranty or representation about this information. Any projections, opinions, assumptions or estimates used here are for example only and do not represent the current or future performance of the property. Interested parties should conduct an independent investigation to determine whether the property suits their needs. REV 11/23