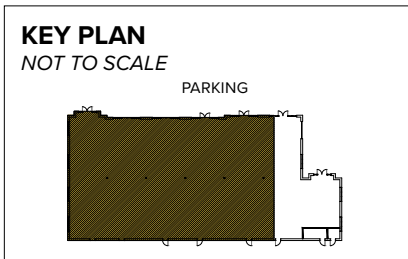


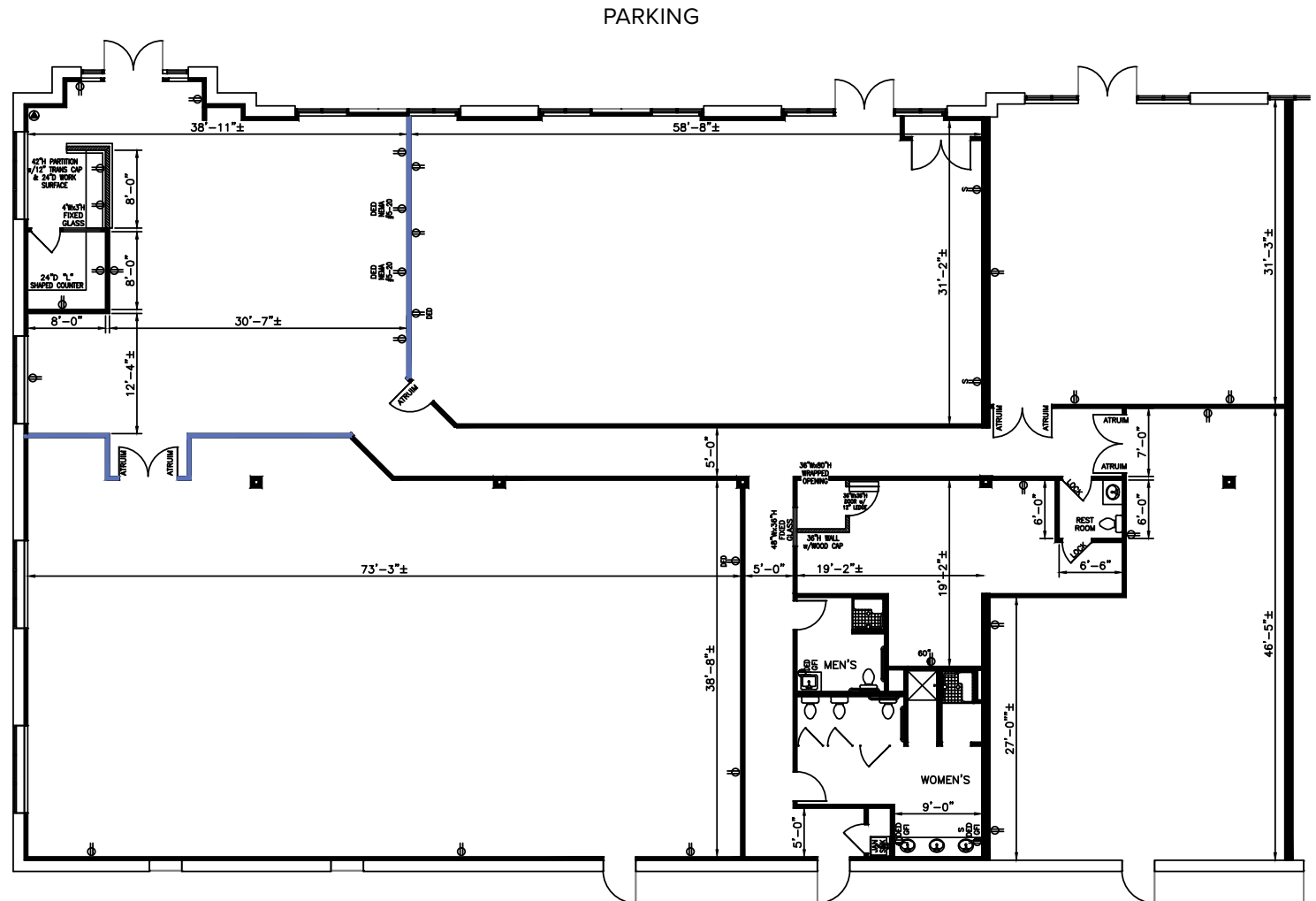


**Total SF Available:**  
2,000-10,653 SF

*Prime retail space in busy  
Greenleigh, end-cap space  
with direct visibility on Rt. 43*



*Note: This space plan is subject to existing field conditions. This drawing is proprietary and the exclusive property of St. John Properties, Inc. Any duplications, distribution, or other unauthorized use is strictly prohibited.*





# Retail

## Inline space & pad sites available

The retail component of Greenleigh can support over 190,000 square feet of space, including inline merchant areas and pad sites. Upon completion Greenleigh will include over 2,000 residential units.

Retail at Greenleigh is located along Rt. 43 (White Marsh Blvd.) in Baltimore County, and serves the 1,000-acre business community and a residential trade area of 40,500+ people in a three mile radius.

### Traffic Count (MDOT)

MD Rt. 43 (White Marsh Blvd): 27,300 vehicles/day

### Demographics

	1 Mile	3 Miles	5 Miles
Population	4,260	40,523	134,687
Avg. Household Income	\$152,765	\$102,247	\$101,435

### Pad Sites

#### Available Pad Sites

6100 Greenleigh Avenue ( <i>Grocery Site</i> )	75,000 SF
Pad A   Market Way	
Pad B   Market Way	
Pad C   Market Way	
Pad D   Pocomoke Court	
Pad E   Pocomoke Court	
Pad F   Pocomoke Court	
Pad G   Pocomoke Court	
Pad H   Innovation Street	

### Retail Availabilities

710 Concourse Circle		
Suites 101-110	<b>AVAILABLE</b>	13,360 SF
720 Concourse Circle		
Michael's Café		6,000 SF
730 Concourse Circle		
Dunkin' Donuts		3,000 SF
740 Concourse Circle		
Suites 109-110	Mallia Salon & Spa	2,887 SF
Suites 111-115	<b>AVAILABLE</b>	10,653 SF
750 Concourse Circle		
Suite 100	<b>AVAILABLE</b>	2,085 SF
Suite 101	Subway	1,620 SF
Suite 102	Thai Rainbow	2,430 SF
Suite 103	The UPS Store	1,639 SF
Suite 104	Crossroads Wine & Spirits	2,690 SF
Suite 105	Polishes Nail & Spa	1,680 SF
Suites 106-108	Potomac Pizza	4,899 SF
11905 Market Way		
Royal Farms		5,786 SF
11521 Wakefield Street		
Suites 100-109	<b>AVAILABLE</b>	13,975 SF
11531 Wakefield Street		
Suites 100-101	Coldwell Banker Realty	2,448 SF
Suites 102-105	<b>AVAILABLE</b>	5,776 SF
Suite 106	Enjoy-A-Bowl	1,314 SF
Suites 107-109	<b>AVAILABLE</b>	4,437 SF



Scan with your mobile device to take a virtual tour, download floor plans and more!

# Contact Us

For additional leasing information or to schedule a tour, contact:

### OFFICE/FLEX SPACE:

**Bill Jautze**

Assistant Vice President,  
Leasing

[bjautze@sjpi.com](mailto:bjautze@sjpi.com)  
410.369.1213

**Matt Lenihan**

Senior Vice President,  
Leasing

[mlehan@sjpi.com](mailto:mlehan@sjpi.com)  
410.369.1202

### RETAIL SPACE:

**Bill Holzman**

Vice President, Retail Leasing

[bholzman@sjpi.com](mailto:bholzman@sjpi.com)  
410.369.1240

**Eric Llewellyn**

Retail Leasing Representative

[ellewellyn@sjpi.com](mailto:ellewellyn@sjpi.com)  
443.464.1308

**Corporate Headquarters:**

2560 Lord Baltimore Drive, Baltimore, MD 21244  
**410.788.0100 | [SJPI.COM](http://SJPI.COM)**

**About St. John Properties**

St. John Properties, Inc. is one of the nation's largest and most successful privately held commercial real estate firms. Founded in 1971, the vertically-integrated company develops, owns and manages office, flex/ research and development, warehouse, retail and residential space nationwide.

Connect with us [@stjohnprop](https://twitter.com/stjohnprop)



This information contained in this publication has been obtained from sources believed to be reliable. St. John Properties makes no guarantee, warranty or representation about this information. Any projections, opinions, assumptions or estimates used here are for example only and do not represent the current or future performance of the property. Interested parties should conduct an independent investigation to determine whether the property suits their needs. REV 01/23