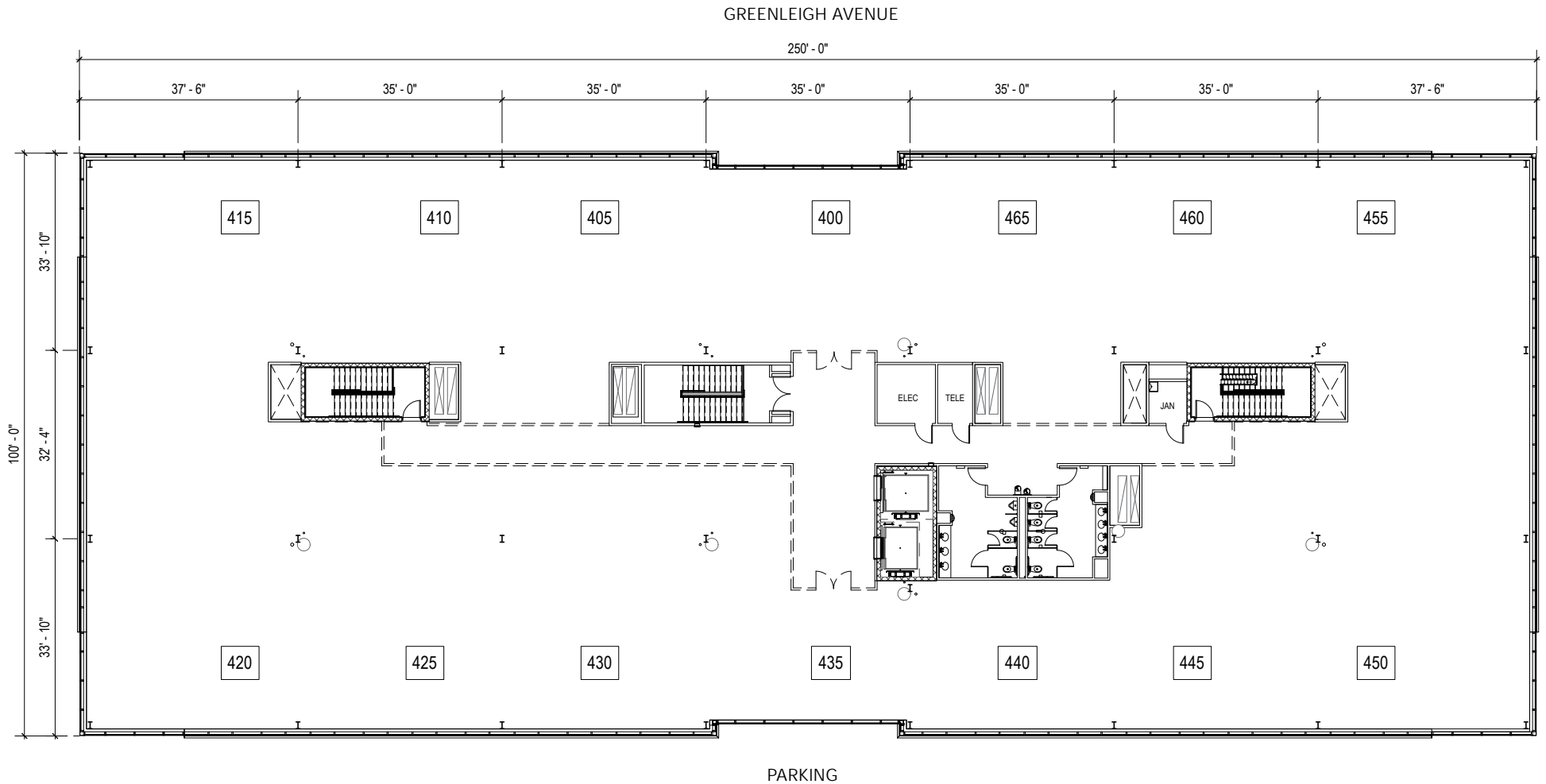


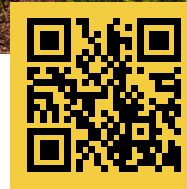
Total SF Available:
5,000 up to 23,835 SF

TAKE A VIRTUAL TOUR

*New multi-story Class 'A' office in mixed-use community of Greenleigh;
LEED Gold Certified building*



Note: This space plan is subject to existing field conditions. This drawing is proprietary and the exclusive property of St. John Properties, Inc. Any duplications, distribution, or other unauthorized use is strictly prohibited.



Scan with your mobile device to take a virtual tour, download floor plans and more!

Contact Us

For additional leasing information or to schedule a tour, contact:

RETAIL SPACE:

Bill Holzman

Vice President, Retail Leasing

bholzman@sjpi.com

410.369.1240

Eric Llewellyn

Retail Leasing Representative

ellewellyn@sjpi.com

443.464.1308

OFFICE/FLEX SPACE:

Alaina McCracken

Partner in Training

amccracken@sjpi.com

443.464.1309

Matt Lenihan

Vice President, Leasing

mlehan@sjpi.com

410.369.1202

Corporate Headquarters:

2560 Lord Baltimore Drive, Baltimore, MD 21244

410.788.0100 | SJPI.COM



About St. John Properties

St. John Properties, Inc. is a full-service real estate company headquartered in Baltimore, Maryland. The company owns, manages and has developed more than 22 million square feet of commercial real estate, including office, ex/R&D, warehouse, retail and residential space.

Connect with us @stjohnprop

