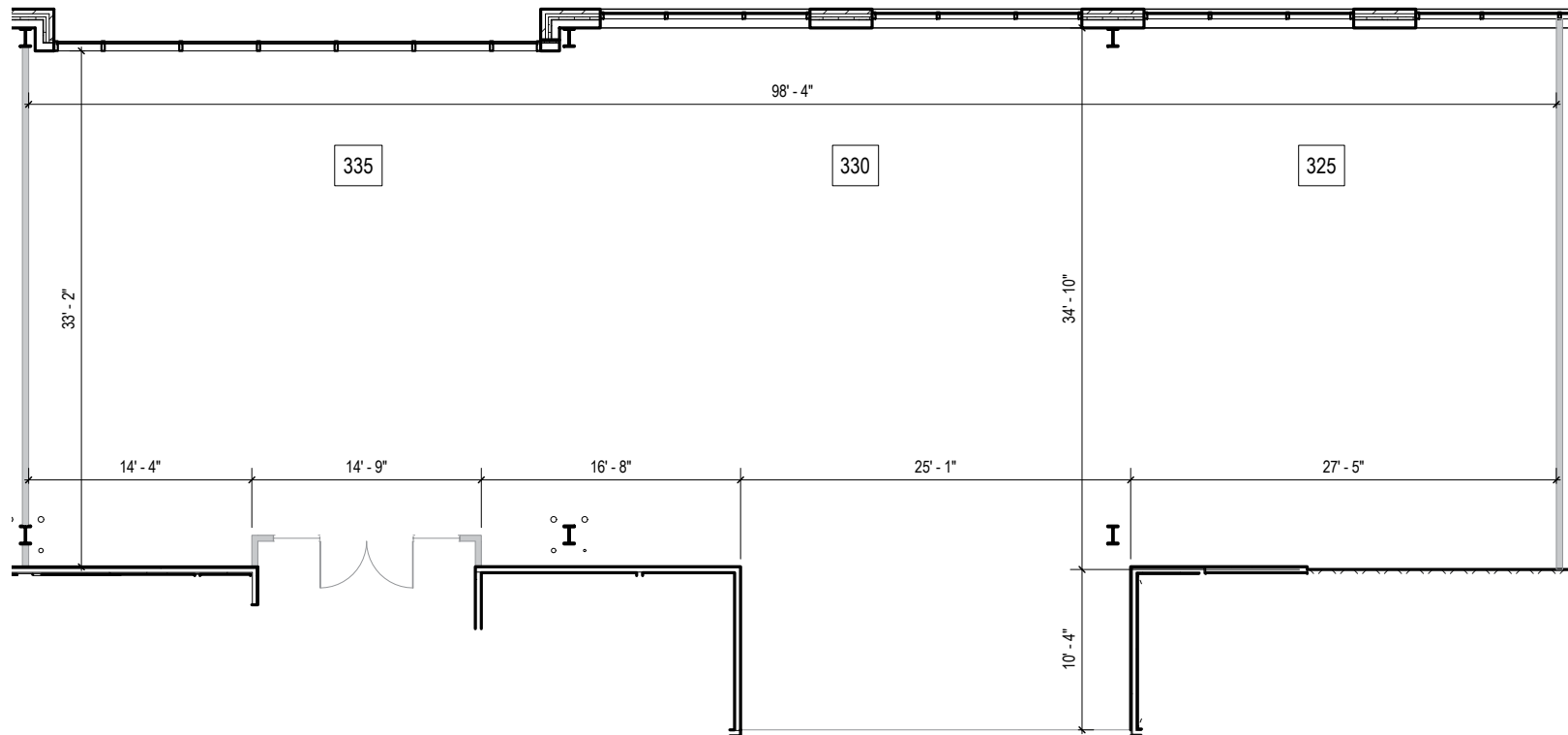




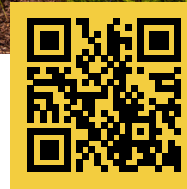
**Total SF Available:**  
1,495 up to 4,163 SF

*New multi-story Class 'A' office in mixed-use community of Greenleigh;  
LEED Gold Certified building; build-to-suit shell space*



PARKING





Scan with your mobile device to take a virtual tour, download floor plans and more!

# Contact Us

For additional leasing information or to schedule a tour, contact:

### RETAIL SPACE:

**Bill Holzman**  
Vice President, Retail Leasing  
bholzman@sjpi.com  
410.369.1240

**Eric Llewellyn**  
Retail Leasing Representative  
ellewellyn@sjpi.com  
443.464.1308

### OFFICE/FLEX SPACE:

**Alaina McCracken**  
Partner in Training  
amccracken@sjpi.com  
443.464.1309

**Matt Lenihan**  
Vice President, Leasing  
mlenihan@sjpi.com  
410.369.1202

### Corporate Headquarters:

2560 Lord Baltimore Drive, Baltimore, MD 21244  
410.788.0100 | SJPI.COM

### About St. John Properties

St. John Properties, Inc. is a full-service real estate company headquartered in Baltimore, Maryland. The company owns, manages and has developed more than 22 million square feet of commercial real estate, including office, ex/R&D, warehouse, retail and residential space.

Connect with us @stjohnprop



This information contained in this publication has been obtained from sources believed to be reliable. St. John Properties makes no guarantee, warranty or representation about this information. Any projections, opinions, assumptions or estimates used here are for example only and do not represent the current or future performance of the property. Interested parties should conduct an independent investigation to determine whether the property suits their needs. REV 01/22