

**The GATE**

6280 Guardian Gateway | Aberdeen Proving Ground, MD 21005  
Suite 350



**Total SF Available:**  
11,797 SF

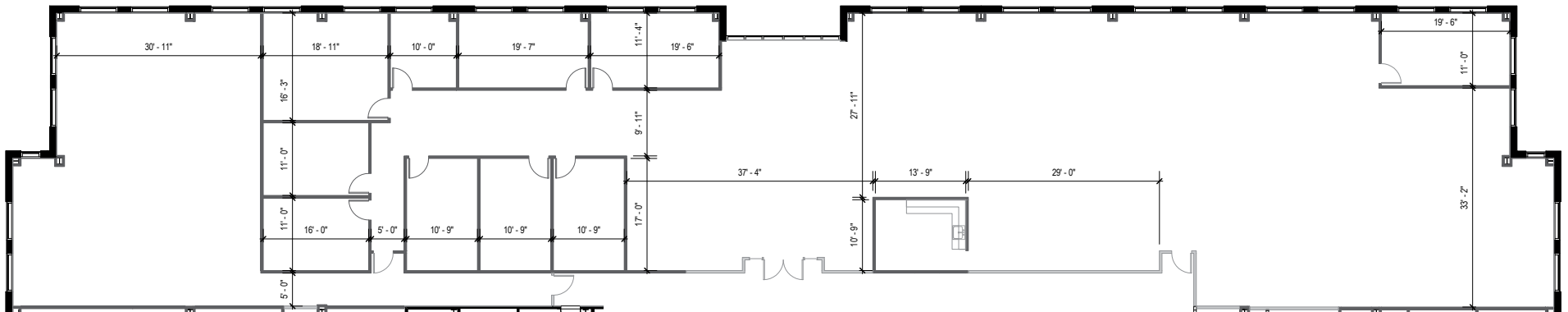
*3-story Class 'A' office, 3rd floor, open plan, building signage available*

**KEY PLAN**  
NOT TO SCALE



**CLICK TO VIEW  
VIRTUAL TOUR**

*Note: This space plan is subject to existing field conditions. This drawing is proprietary and the exclusive property of St. John Properties, Inc. Any duplications, distribution, or other unauthorized use is strictly prohibited.*





- ▶ Seven three-story, Class 'A' office buildings
- ▶ Abundant free surface parking
- ▶ Sleek and modern Class 'A' lobbies
- ▶ Glass and brick exteriors constructed to Anti-Terrorism-Force-Protection (ATFP) Standards
- ▶ Virtually column-free construction floor-plates

**Three-Story Office Building**

6190 Guardian Gateway	75,000 SF	<b>LEED SILVER</b>
6200 Guardian Gateway	75,000 SF	<b>LEED SILVER</b>
6210 Guardian Gateway	75,000 SF	<b>LEED SILVER</b>
6260 Guardian Gateway	74,321 SF	<b>LEED SILVER</b>
6280 Guardian Gateway	74,334 SF	<b>LEED SILVER</b>
Three-Story Office	FUTURE	
Three-Story Office	FUTURE	

**Multi-Story Office Specifications**

LEED	Core & shell
Suite Sizes	1,252 up to 75,000 SF
Ceiling Height	10 ft. clear minimum
Parking	5 spaces per 1,000 SF
Exterior	ATFP
Elevator	Yes







Scan with your mobile device to take a virtual tour, download floor plans and more!

## Contact Us

For additional leasing information or to schedule a tour, contact:

**Michael Tait**  
Leasing  
Representative  
mtait@sjpi.com  
443.464.1315

**Matt Lenihan**  
Senior Vice President,  
Leasing  
mlenihan@sjpi.com  
410.369.1202

**Corporate Headquarters:**  
2560 Lord Baltimore Drive | Baltimore, MD 21244

**410.788.0100 | SJPI.COM**



### About St. John Properties

St. John Properties, Inc. is one of the nation's largest and most successful privately held commercial real estate firms. Founded in 1971, the vertically-integrated company develops, owns and manages office, flex/research and development, warehouse, retail and residential space nationwide.

Connect with us @stjohnprop

