



**TOTAL SF AVAILABLE:**  
1,852 SF

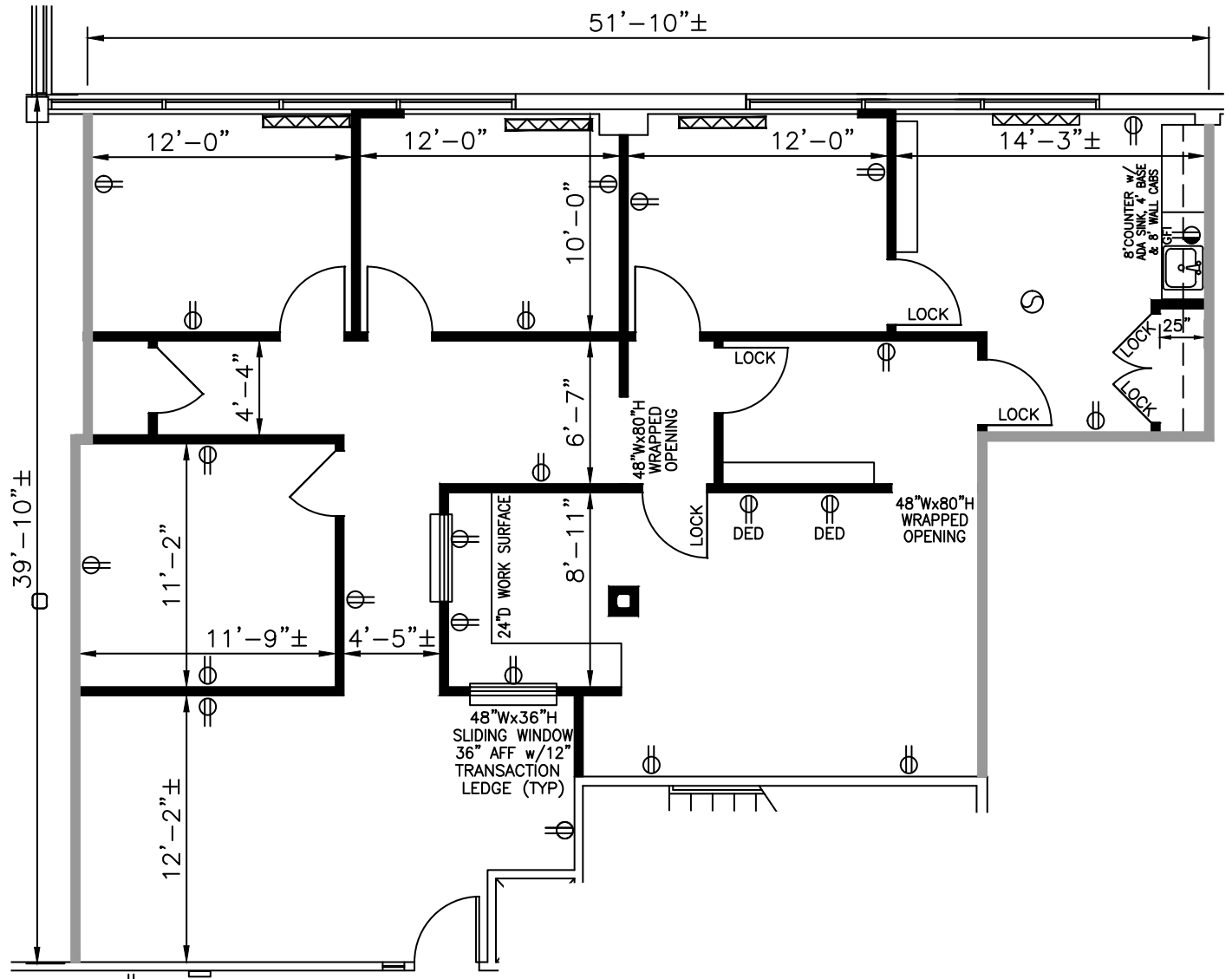
Medical office space

[CLICK TO VIEW  
VIRTUAL TOUR](#)

**KEY PLAN**  
NOT TO SCALE



*Note: This space plan is subject to existing field conditions. This drawing is proprietary and the exclusive property of St. John Properties, Inc. Any duplications, distribution, or other unauthorized use is strictly prohibited.*



## About Cromwell Center

Cromwell Center is a two-building, 120,000 square foot complex located directly off Baltimore Beltway Exit 29A and Cromwell Bridge Road in Towson, Maryland. Two three-story, 60,000 square foot office buildings each has 20,000 square foot floorplates designed for maximum flexibility.

The project site features a beautiful wooded setting with mature landscaping, conference room, on site gym, as well as local business amenities, including a hotel within walking distance.

For more information on Cromwell Center, visit: [sjpi.com/cromwellcenter](http://sjpi.com/cromwellcenter)

### Three-Story Office Buildings

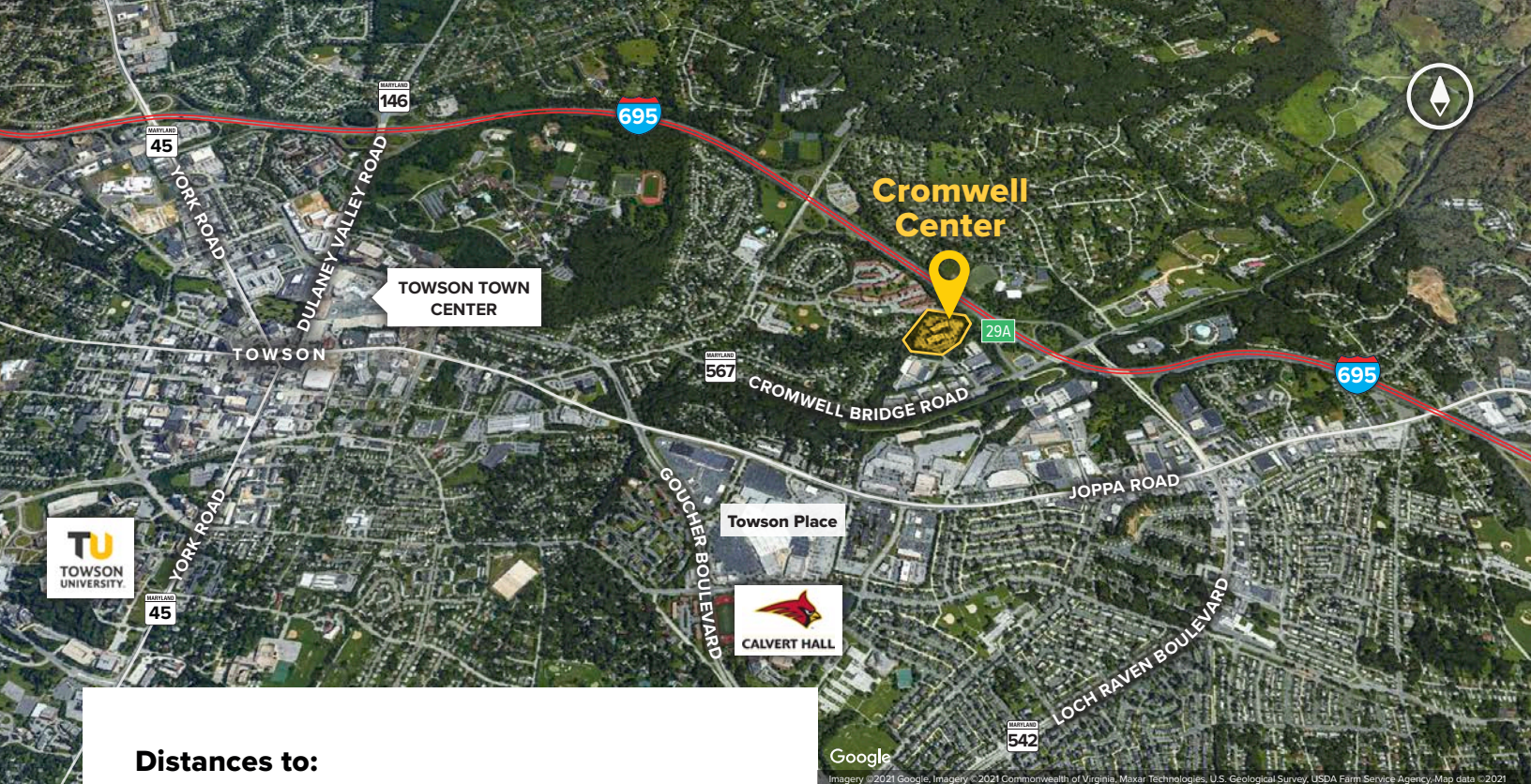
809 Gleneagles Court	60,000 SF
810 Gleneagles Court	60,000 SF

### Three-Story Office Specifications

Suite Sizes	1,000 up to 60,000 SF
Ceiling Height	8.5 ft. clear minimum
Offices	Built to suit
Elevator	Yes
Parking	3 spaces per 1,000 SF
HVAC	Gas, VAV with zone control
Zoning	ML-IM







**Distances to:**

Baltimore, MD (Downtown) .....	9 miles
BWI Airport .....	19 miles
Interstate 83 .....	4.4 miles
Interstate 95 .....	6 miles
Towson, MD .....	1.5 miles
Owings Mills, MD .....	12 miles
White Marsh, MD .....	8 miles



Scan with your mobile device to take a virtual tour, download floor plans and more!

# Contact Us

For additional leasing information or to schedule a tour, contact:

**Stephanie Caronna**

Leasing Representative

scaronna@sjpi.com | 410.369.1235

**Corporate Headquarters:**

2560 Lord Baltimore Drive | Baltimore, MD 21244

**410.788.0100 | SJPI.COM**

**About St. John Properties**

St. John Properties, Inc. is one of the nation's largest and most successful privately held commercial real estate firms. The company owns, manages, and has developed office, flex/research and development, warehouse, retail, and residential space nationwide.

Connect with us @stjohnprop



This information contained in this publication has been obtained from sources believed to be reliable. St. John Properties makes no guarantee, warranty or representation about this information. Any projections, opinions, assumptions or estimates used here are for example only and do not represent the current or future performance of the property. Interested parties should conduct an independent investigation to determine whether the property suits their needs. REV 05/23