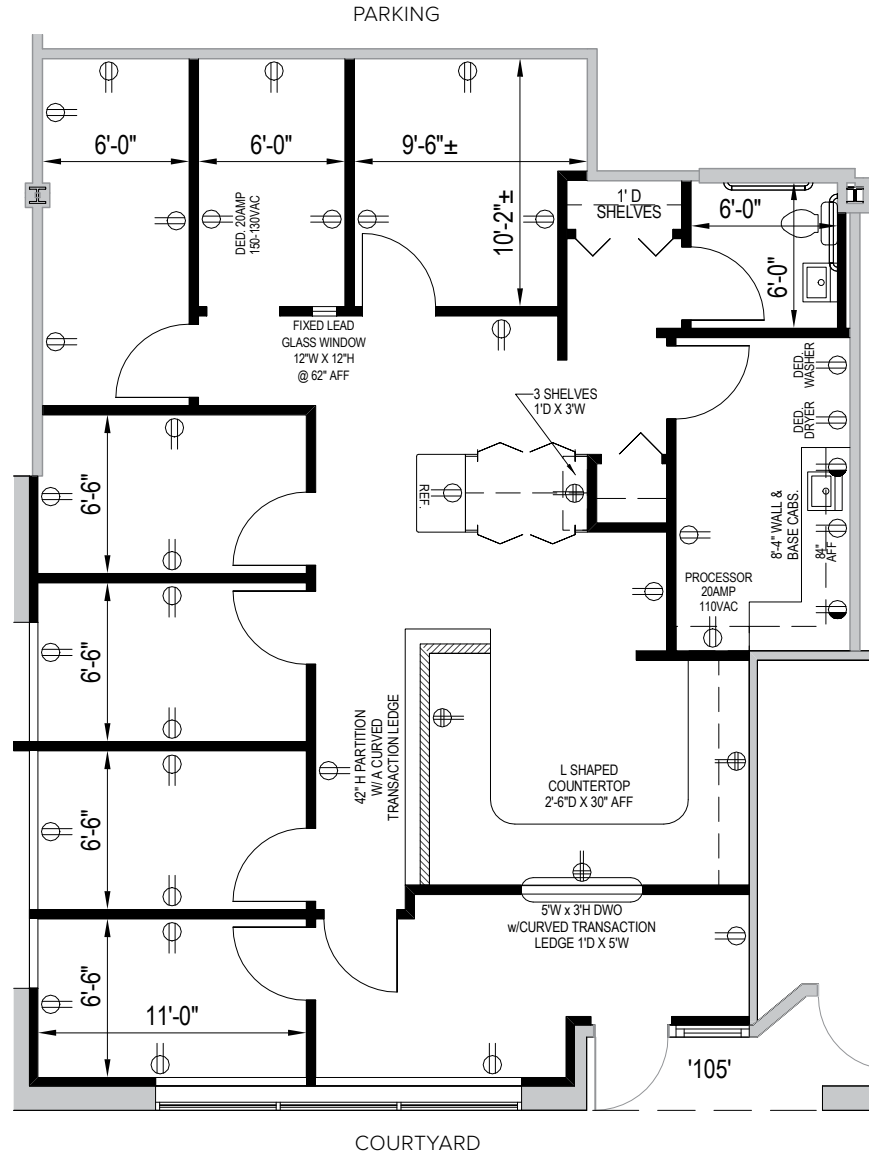
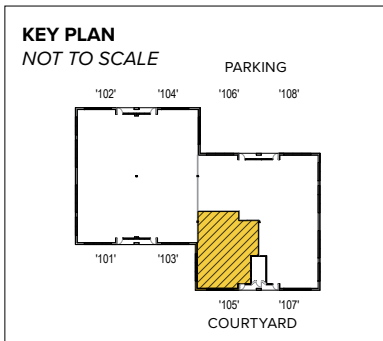




**CLICK TO VIEW
VIRTUAL TOUR**

**Total SF Available:
1,430 SF**

*Efficient private office (6)
layout with large reception*



About Crestridge Center

Crestridge Center consists of two single-story office buildings, one two-story office building and 4,500 square feet of retail space, for a total of 52,860 square feet of leasable space. The six-acre business park offers a campus-like environment with attractive landscaping and contemporary architecture.

Crestridge Center is easily accessible from the Warren Road Interchange (Exit 18) off of Interstate 83 and is only 10 minutes from Towson and 20 minutes from downtown Baltimore.

Traffic Count (MDOT)

York Road at Warren Road: 27,830 vehicles/day

Demographics

	1 Mile	3 Miles	5 Miles
Population	9,863	52,767	96,728
Avg. Household Income	\$100,244	\$141,896	\$158,278



Single-Story Office Buildings

10153 York Road	10,112 SF
10151 York Road	18,000 SF

Single-Story Office Specifications

Suite Sizes	1,125 up to 18,000 SF
Ceiling Height	8 ft. clear minimum
Parking	4 spaces per 1,000 SF
HVAC	Heat pump
Roof	EPDM rubber
Construction	Brick on block
Zoning	BM-IM & ML-AS

Two-Story Office Building

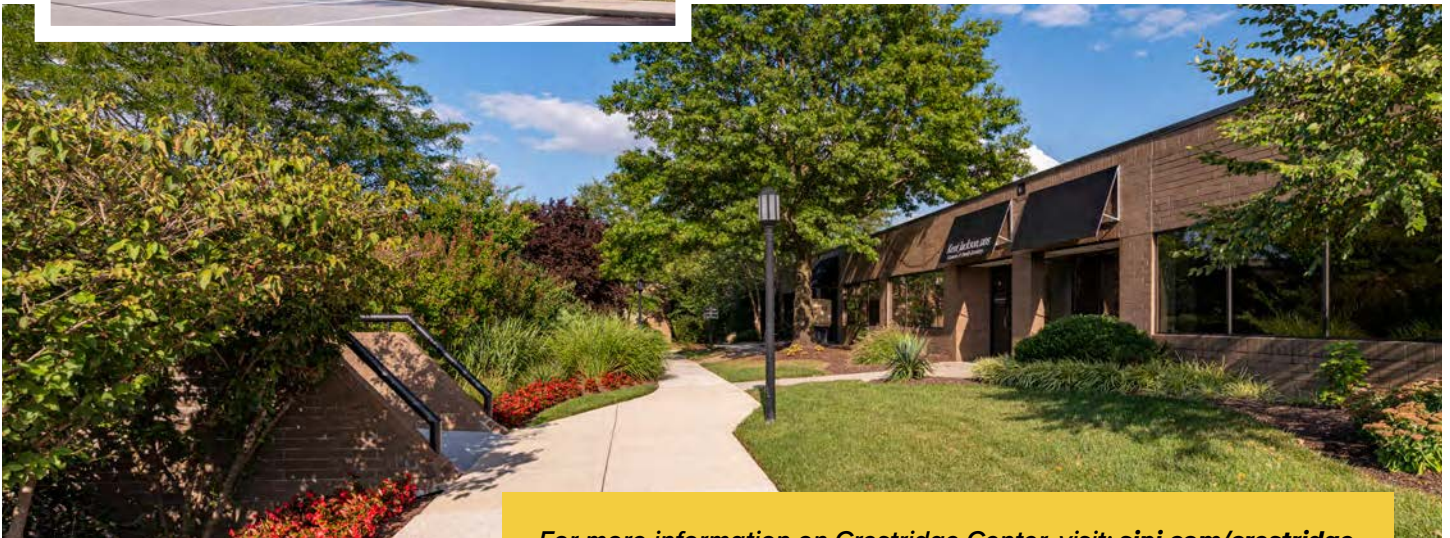
10155 York Road	20,250 SF
-----------------	-----------

Two-Story Office Specifications

Suite Sizes	1,218 up to 20,250 SF
Ceiling Height	8 ft. clear minimum
Parking	4 spaces per 1,000 SF
HVAC: 1 st Floor	Heat pump
HVAC: 2 nd Floor	Gas
Roof	EPDM rubber
Construction	Brick on block
Zoning	BM-IM & ML-AS

Retail Building

10151 York Road	4,500 SF
-----------------	----------



For more information on Crestridge Center, visit: sjpi.com/crestridge



**Over 490 retailers and
46,690 employees
in a 3 mile radius**

Distances to:

- Baltimore, MD (Downtown) 14 miles
- BWI Airport 22 miles
- Interstate 83 2 miles
- Interstate 695 4 miles
- Timonium, MD 3 miles
- Towson, MD 5 miles
- York, PA 36 miles

Contact Us

For additional leasing information or to schedule a tour, contact:

Stephanie Caronna
Leasing Representative
scaronna@smpi.com | 410.369.1235

Corporate Headquarters:
2560 Lord Baltimore Drive | Baltimore, MD 21244

410.788.0100 | SJPI.COM



Scan with your mobile device to take a virtual tour, download floor plans and more!

About St. John Properties

St. John Properties, Inc. is one of the nation's largest and most successful privately held commercial real estate firms. The company owns, manages, and has developed office, flex/research and development, warehouse, retail, and residential space nationwide.

Connect with us @stjohnprop



This information contained in this publication has been obtained from sources believed to be reliable. St. John Properties makes no guarantee, warranty or representation about this information. Any projections, opinions, assumptions or estimates used here are for example only and do not represent the current or future performance of the property. Interested parties should conduct an independent investigation to determine whether the property suits their needs. REV 06/23