



Flex/R&D Business Park

Barringer Foreman Tech Park

14141 Airline Highway
Baton Rouge, LA 70817

About the Property

The business park is part of a 28-acre business community on Airline Highway in South Baton Rouge and features 216,720 square feet of flex/R&D space.

For more information on Barringer Foreman Tech Park, visit: sjpi.com/barringertech

Flex/R&D Buildings

14141 Airline Highway	
Building 1 Nottoway	60,240 SF
Building 2 Houmas	60,240 SF
Building 3 Tezcucu	60,240 SF
Building 4 Oak Alley	36,000 SF

Flex/R&D Specifications

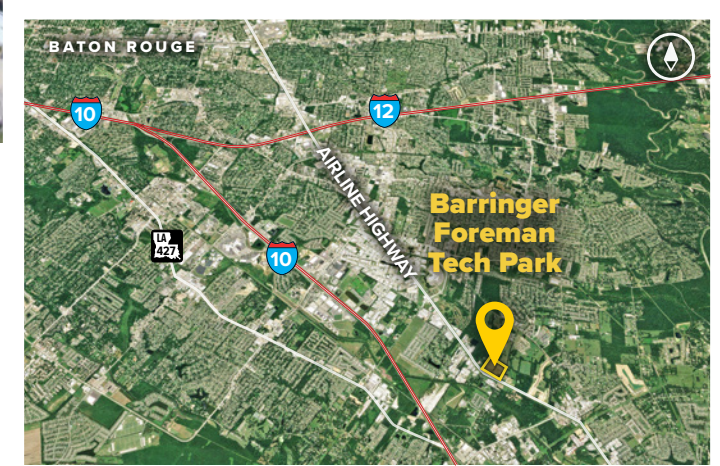
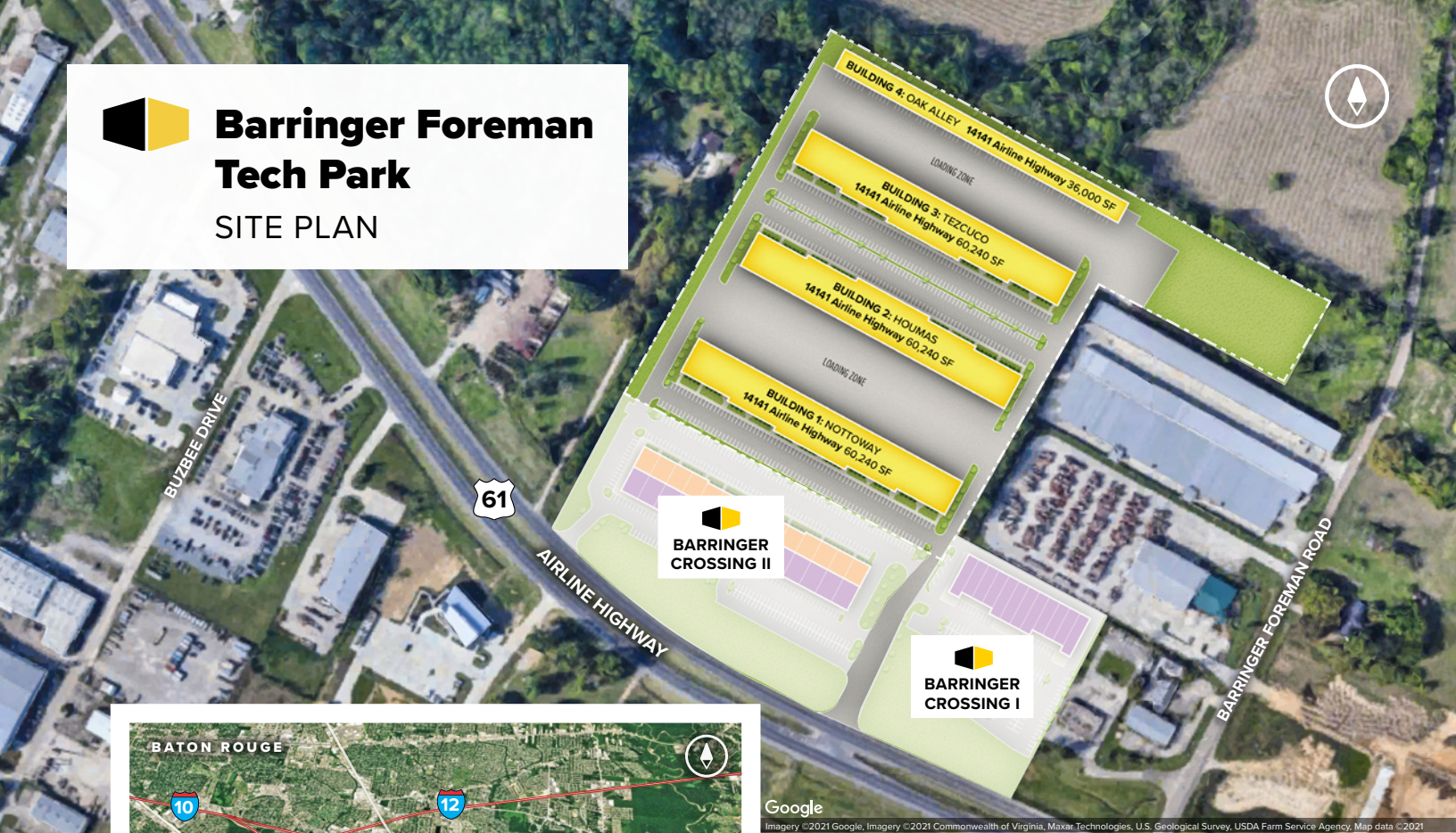
Suite Sizes	1,500 up to 60,240 SF
Ceiling Height	16 ft. clear height
Parking	Up to 4 per 1,000 SF
Heat	Gas
Roof	SS Metal, Galvalume
Construction	Brick
Loading	Dock or drive-in
Zoning	M1





Barringer Foreman Tech Park

SITE PLAN



Google
 Imagery ©2021 Google, Imagery ©2021 Commonwealth of Virginia, Maxar Technologies, U.S. Geological Survey, USDA Farm Service Agency, Map data ©2021



Scan with your mobile device to take a virtual tour, download floor plans and more!

Contact Us

For additional leasing information or to schedule a tour, contact:

Todd Pevey
 Regional Partner, Louisiana
 tpevey@sjpi.com | 225.571.1002

Louisiana Regional Headquarters:
 6473 Highway 44 | Suite 201
 Gonzales, LA 70737
 225.257.4820 | SJPI.COM/LOUISIANA

About St. John Properties

St. John Properties, Inc. is one of the nation's largest and most successful privately held commercial real estate firms. Founded in 1971, the vertically-integrated company develops, owns and manages office, flex/ research and development, warehouse, retail and residential space nationwide.

Connect with us @stjohnprop



This information contained in this publication has been obtained from sources believed to be reliable. St. John Properties makes no guarantee, warranty or representation about this information. Any projections, opinions, assumptions or estimates used here are for example only and do not represent the current or future performance of the property. Interested parties should conduct an independent investigation to determine whether the property suits their needs. REV 02/25