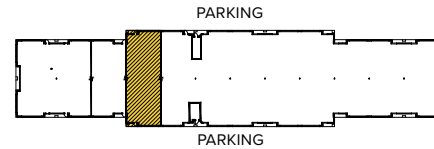




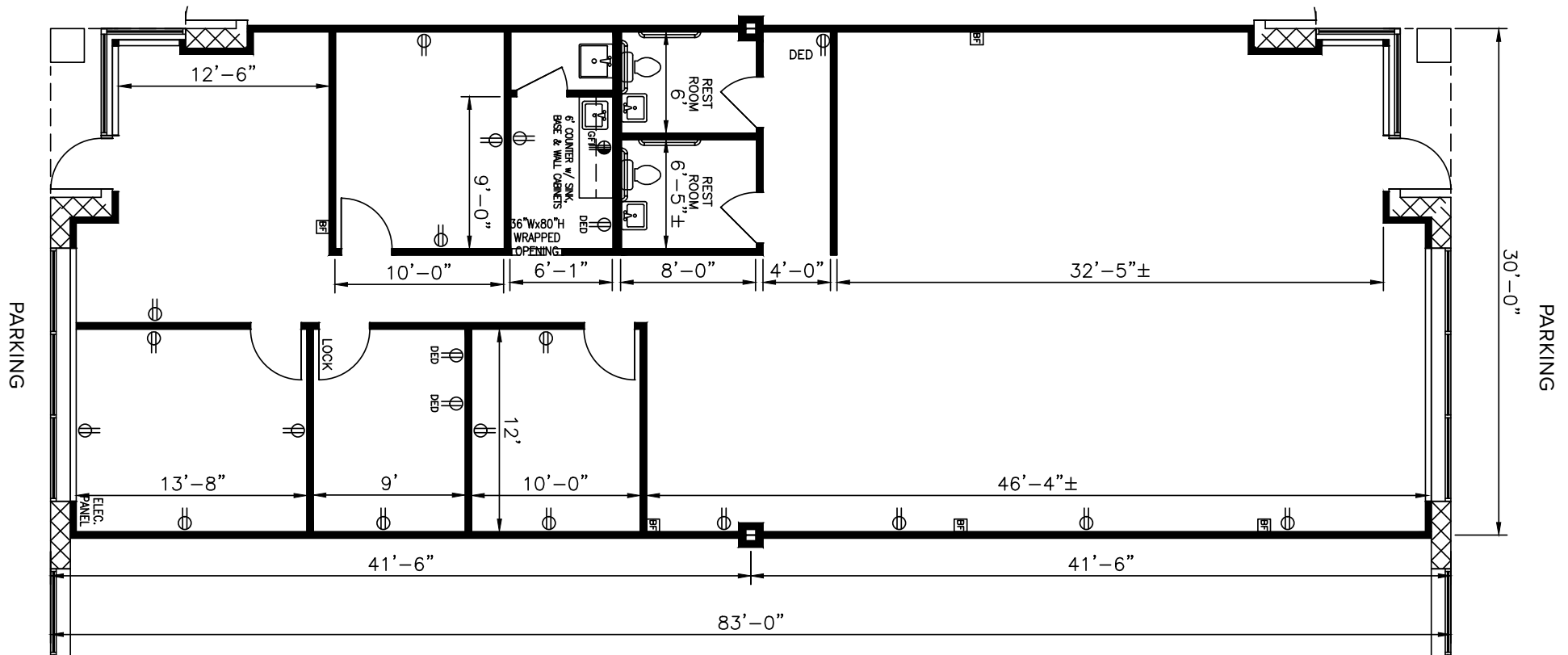
**TOTAL SF AVAILABLE:**  
2,490 SF

*100% office space*

**KEY PLAN**  
NOT TO SCALE



**CLICK TO VIEW  
VIRTUAL TOUR**



*Note: This space plan is subject to existing field conditions. This drawing is proprietary and the exclusive property of St. John Properties, inc. Any duplications, distribution, or other unauthorized use is strictly prohibited.*



BWI Tech Park contains over 163,260 square feet of single-story office space. Suite sizes range from 2,010 square feet up to 32,400 square feet and offer nine-foot ceiling heights with free, on-site parking. An underground conduit system enables state-of-the-art voice and data connections between buildings, making the site ideal for clients requiring space in multiple locations.



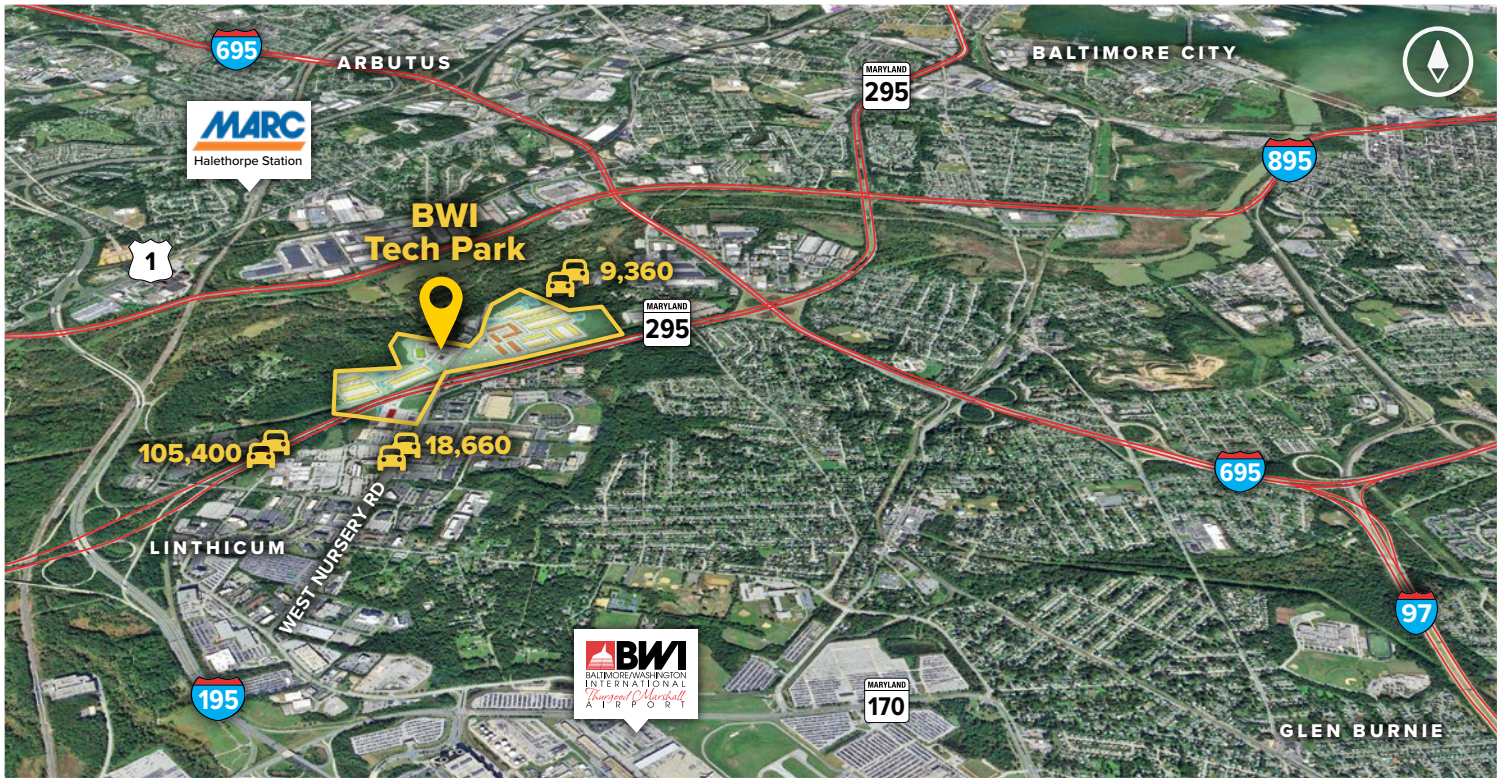
**Single-Story Office Buildings**

505 Progress Drive	28,800 SF
509 Progress Drive	32,400 SF
601 Global Way	27,670 SF
605 Global Way	23,360 SF
609 Global Way	27,670 SF
613 Global Way	23,360 SF

**Single-Story Office Specifications**

Suite Sizes	2,010 up to 32,400 SF
Ceiling Height	9 ft. clear minimum
Offices	Built to suit
Parking	5 spaces per 1,000 SF
Heat	Gas
Roof	EPDM rubber
Exterior Walls	Brick on block
Zoning	W-1





**Distances to:**

Annapolis, MD (Downtown) .....	22 miles
Arundel Mills Mall .....	4 miles
Baltimore, MD (Downtown) .....	8 miles
BWI Airport .....	2 miles
Columbia, MD .....	12 miles
Interstate 495 (Capital Beltway) .....	19 miles
Interstate 695 (Baltimore Beltway) .....	3 miles
MD 100 .....	4 miles
MD 295 .....	0.1 mile

# Contact Us

For additional leasing information or to schedule a tour, contact:

**OFFICE & FLEX/R&D SPACE:**

**DJ Andrew**  
 Partner in Training  
 dandrew@sjpi.com  
 410.369.1222

**Lacey Johansson**  
 Assistant Vice President, Leasing  
 ljohansson@sjpi.com  
 410.369.1229

**RETAIL SPACE:**

**Eric Llewellyn**  
 Retail Leasing Representative  
 ellewellyn@sjpi.com  
 443.369.1308

**Bill Holzman**  
 Vice President, Retail Leasing  
 bholzman@sjpi.com  
 410.369.1240

**Corporate Headquarters:**

2560 Lord Baltimore Drive | Baltimore, MD 21244

**410.788.0100 | SJPI.COM**

**About St. John Properties**

St. John Properties, Inc. is one of the nation's largest and most successful privately held commercial real estate firms. Founded in 1971, the vertically-integrated company develops, owns and manages office, flex/ research and development, warehouse, retail and residential space nationwide.

Connect with us @stjohnprop



*This information contained in this publication has been obtained from sources believed to be reliable. St. John Properties makes no guarantee, warranty or representation about this information. Any projections, opinions, assumptions or estimates used here are for example only and do not represent the current or future performance of the property. Interested parties should conduct an independent investigation to determine whether the property suits their needs. REV 10/23*