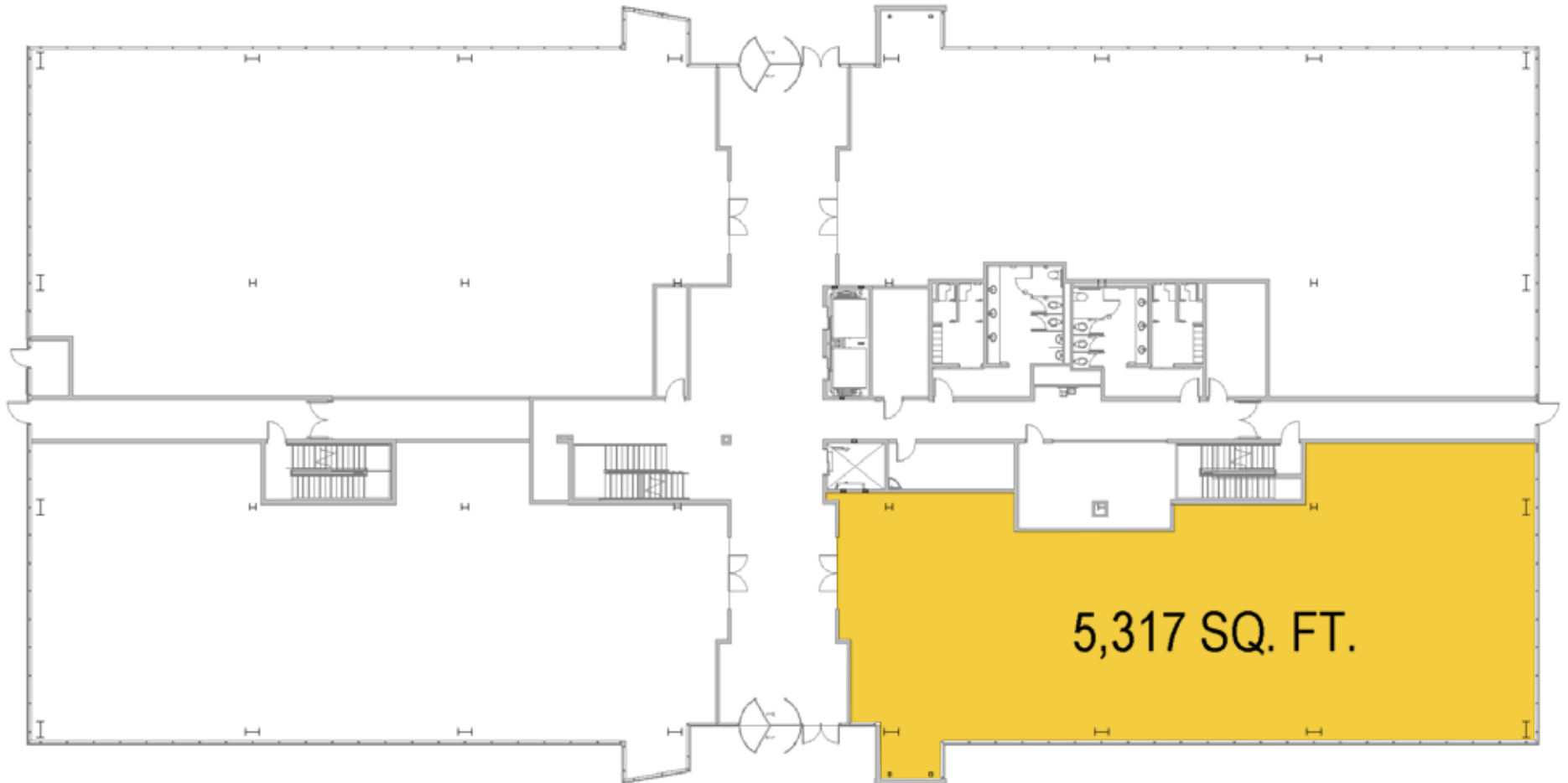


Total SF Available:
5,317 SF





Valley Grove II & III

1221 S Valley Grove Way & Valley Grove III



Mid-Rise Class 'A' Office

| Mid-Rise Office Buildings | |
|--------------------------------|-------------------------|
| 1221 S Valley Grove Way | 140,769 SF |
| Valley Grove III | 111,502 SF FUTURE |
| Mid-Rise Office Specifications | |
| LEED | Designed |
| Suite Sizes | 2,500 up to 140,769 SF |
| Ceiling Height | 10-13 ft. clear minimum |
| Offices | Built to suit |
| Parking | 5.5 spaces per 1,000 SF |

Mountain views & floor-to-ceiling glass





Distances to:

- Interstate 215 25 miles
- Provo, UT 12 miles
- Salt Lake City, UT 34.5 miles
- Salt Lake City International Airport 38 miles

About St. John Properties

St. John Properties, Inc. is a full-service real estate company headquartered in Baltimore, Maryland. The company owns, manages and has developed more than 20 million square feet of commercial real estate, including office, flex/R&D, warehouse, retail and residential space.

For additional leasing information or to schedule a tour, contact:

Scott Gifford
Leasing Representative
 sgifford@sjpiutah.com
 801.899.7991

Daniel Thomas
Regional Partner, Utah
 dthomas@sjpiutah.com
 801.899.7991



1982 W Pleasant Grove Boulevard | Suite D
 Pleasant Grove, Utah 84062

801.899.7991 | THEVALLEYGROVE.COM
 MD | CO | LA | NV | PA | UT | VA | WI

Connect with us @thevalleygrove  



This information contained in this publication has been obtained from sources believed to be reliable. St. John Properties makes no guarantee, warranty or representation about this information. Any projections, opinions, assumptions or estimates used here are for example only and do not represent the current or future performance of the property. Interested parties should conduct an independent investigation to determine whether the property suits their needs. REV 03/20