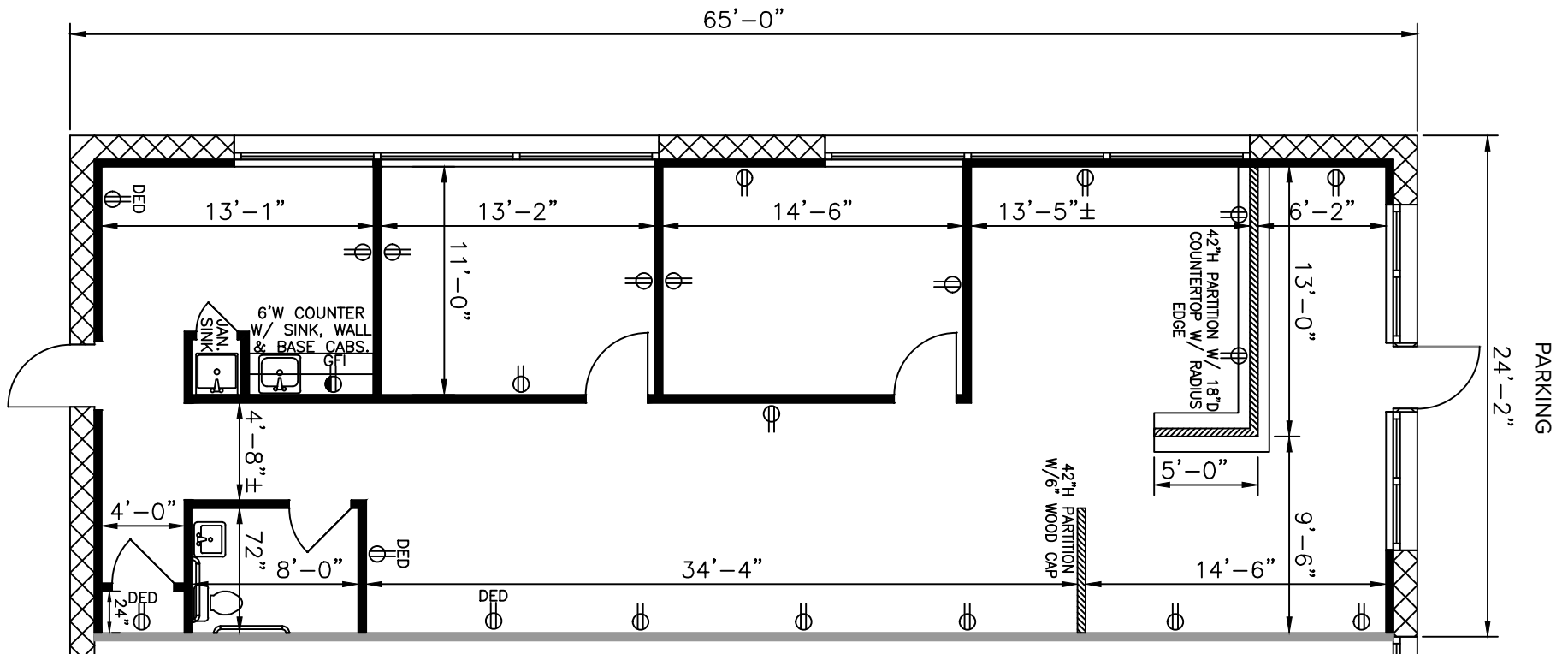
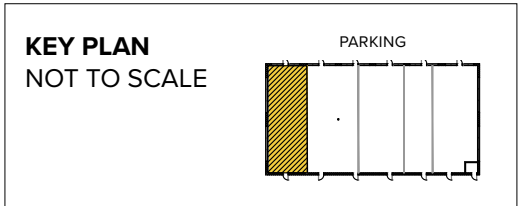


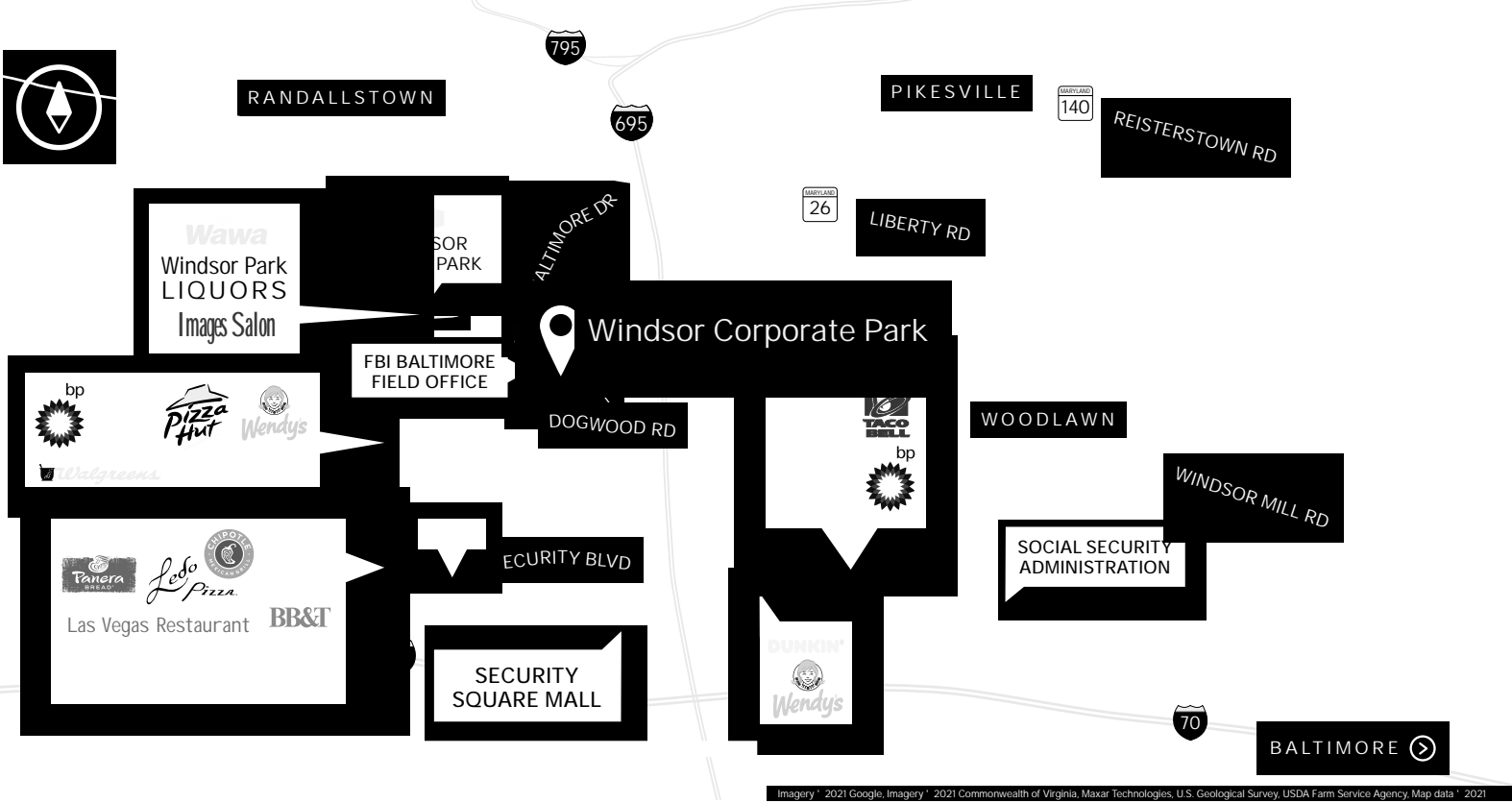


Total SF Available:
1,583 SF

Highly visible retail, nicely improved as insurance/financial services office

TAKE A VIRTUAL TOUR





Imagery © 2021 Google, Imagery © 2021 Commonwealth of Virginia, Maxar Technologies, U.S. Geological Survey, USDA Farm Service Agency, Map data © 2021



DOGWOOD ROAD



Scan with your mobile device to take a virtual tour, download our plans and more!

Contact Us

For additional leasing information or to schedule a tour, contact:

Eric Llewellyn
Retail Leasing
Representative
ellewellyn@sjpi.com
443.464.1308

Bill Holzman
Vice President,
Retail Leasing
bholzman@sjpi.com
410.369.1240

Corporate Headquarters:
2560 Lord Baltimore Drive, Baltimore, MD 21244
410.788.0100 | SJPI.COM

About St. John Properties
St. John Properties, Inc. is a full-service real estate company headquartered in Baltimore, Maryland. The company owns, manages and has developed more than 21 million square feet of commercial real estate, including office, ex/R&D, warehouse, retail and residential space.

Connect with us @stjohnprop



This information contained in this publication has been obtained from sources believed to be reliable. St. John Properties makes no guarantee, warranty or representation about this information. Any projections, opinions, assumptions or estimates used here are for example only and do not represent the current or future performance of the property. Interested parties should conduct an independent investigation to determine whether the property suits their needs. REV 09/21