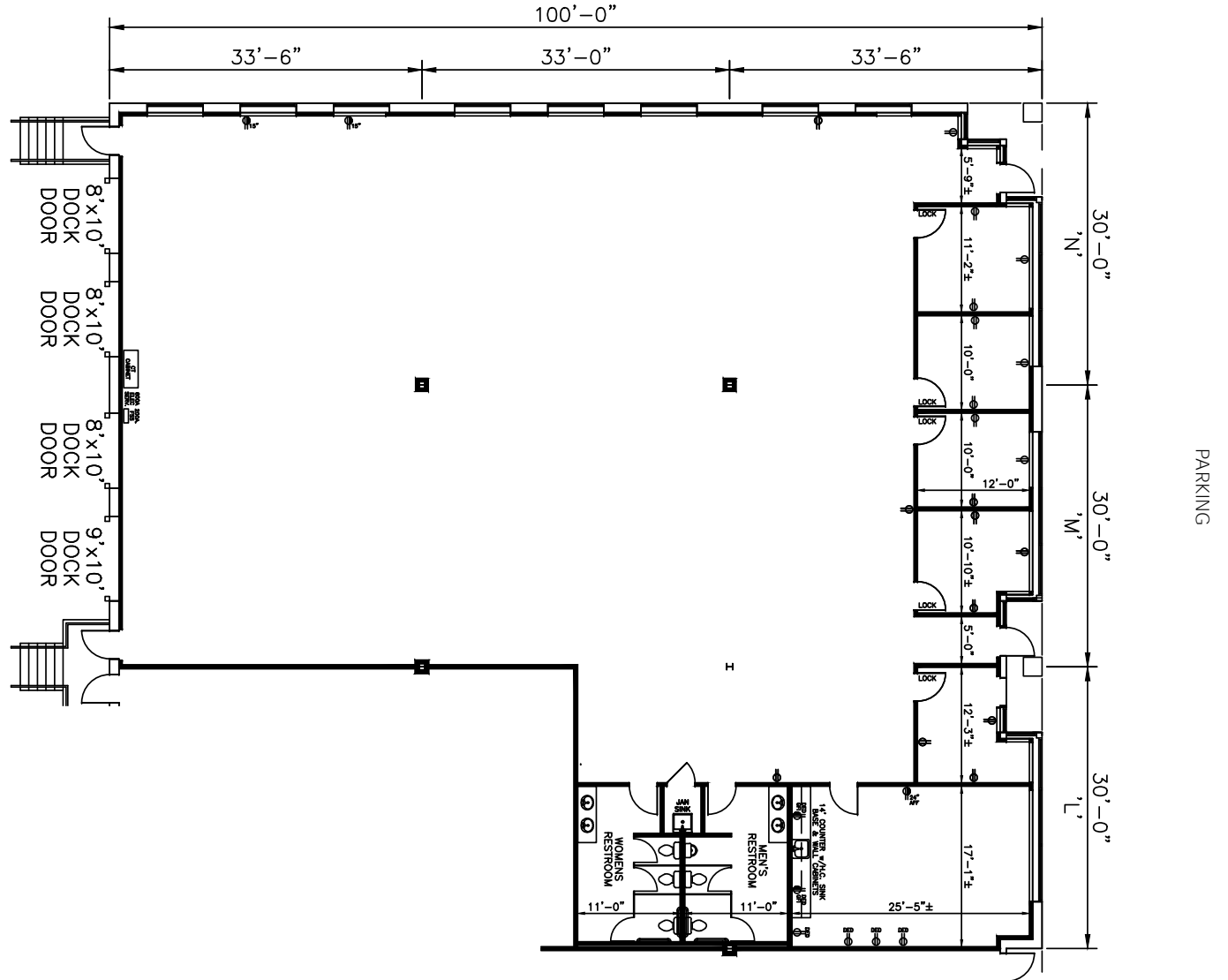
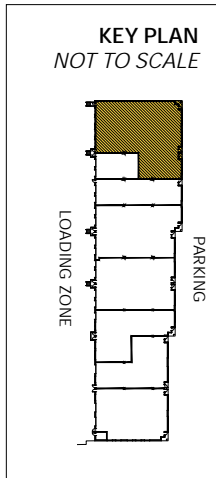
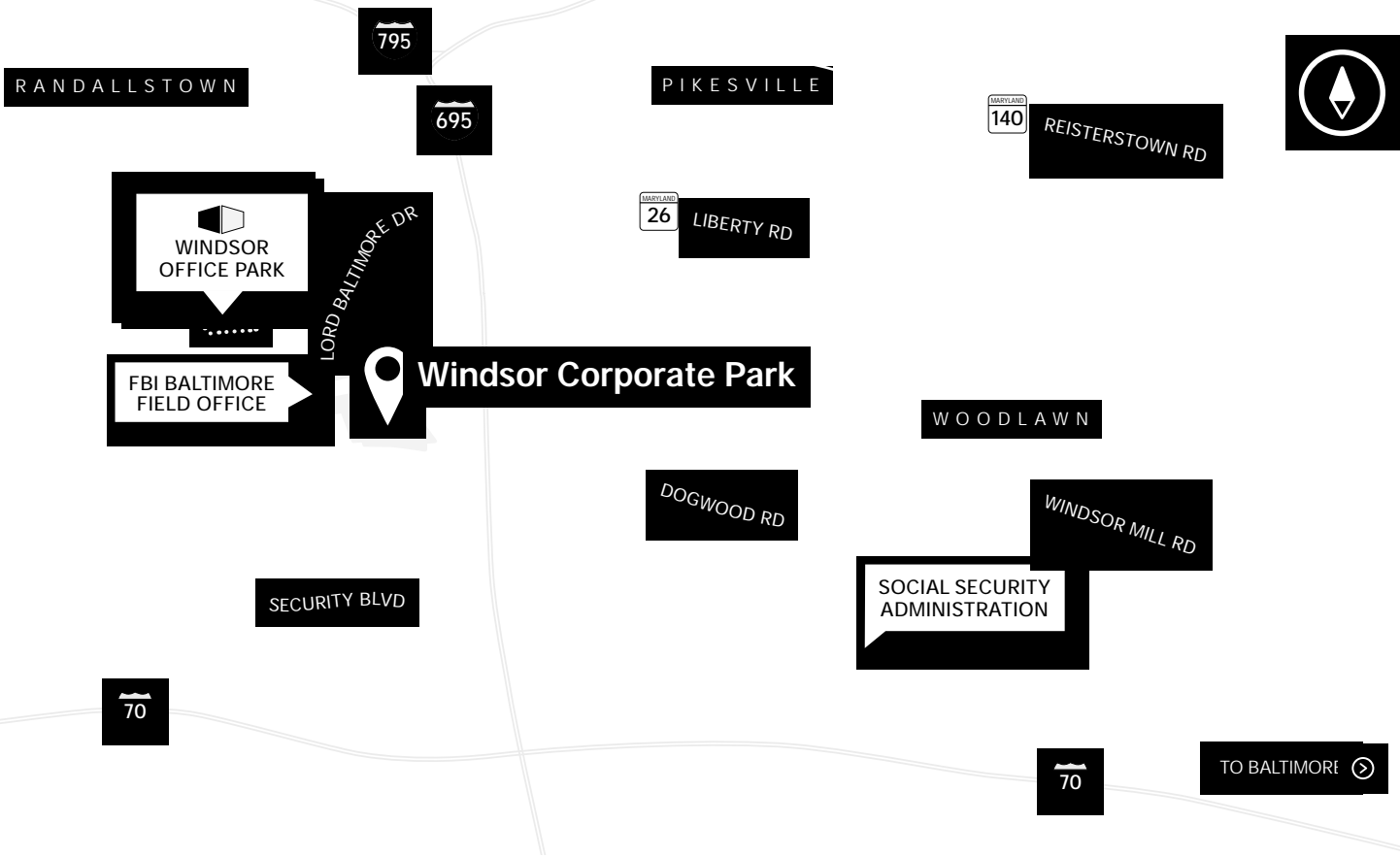


Total SF Available:

7,500 SF

All office with dock loading





Distances to:

- Baltimore, MD (Downtown) 9 miles
- BWI Airport 11 miles
- Columbia, MD 10 miles
- Interstate 70 4 miles
- Interstate 83 9 miles
- Interstate 95 7 miles
- Interstate 695 (Baltimore Beltway) 2 miles
- Interstate 795 3 miles
- Owings Mills, MD 5 miles
- Towson, MD 8 miles

About St. John Properties

St. John Properties, Inc. is a full-service real estate company headquartered in Baltimore, Maryland. The company owns, manages and has developed more than 21 million square feet of commercial real estate, including office, ex/R&D, warehouse, retail and residential space.




For additional leasing information or to schedule a tour, contact:

Michael Sacks
Partner in Training
 410.369.1233 | msacks@sjpi.com

Sean Doordan
Senior VP, Leasing & Acquisitions
 410.369.1211 | sdoordan@sjpi.com



2560 Lord Baltimore Drive
 Baltimore, MD 21244
 410.788.0100 | SJPI.COM
 MD | CO | LA | NV | PA | UT | VA | WI

Connect with us @stjohnprop    



This information contained in this publication has been obtained from sources believed to be reliable. St. John Properties makes no guarantee, warranty or representation about this information. Any projections, opinions, assumptions or estimates used here are for example only and do not represent the current or future performance of the property. Interested parties should conduct an independent investigation to determine whether the property suits their needs. REV 01/21