



410.788.0100 | SJPI.COM

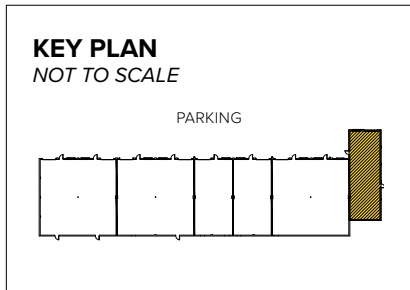
Stafford Business Center

2916 Stafford Street | Baltimore, MD 21223

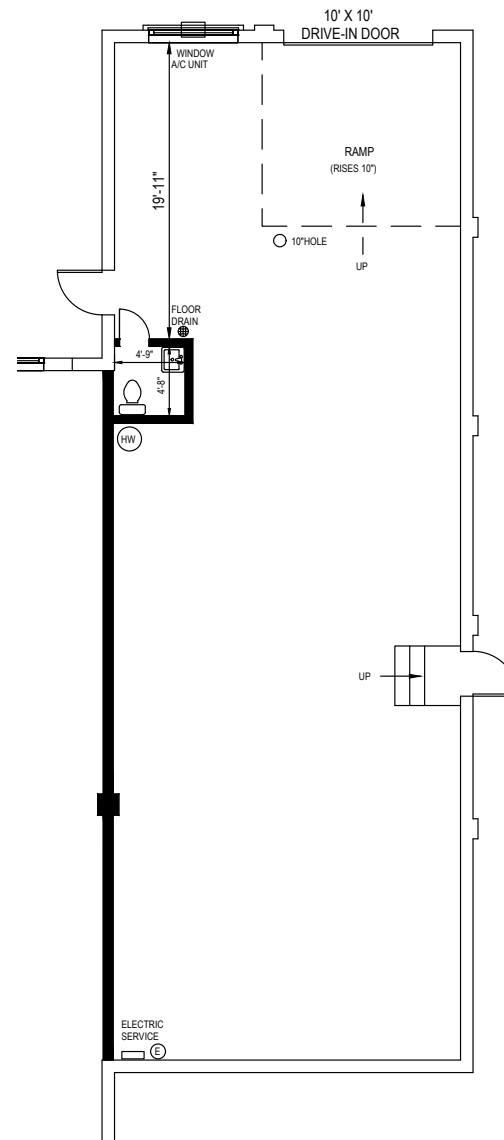


Total SF Available:
1,800 SF

*Small warehouse space with
drive-in loading available*



Note: This space plan is subject to existing field conditions. This drawing is proprietary and the exclusive property of St. John Properties, Inc. Any duplications, distribution, or other unauthorized use is strictly prohibited.





Stafford Business Center

Distances to:

Annapolis, MD (Downtown)	25 miles
Baltimore, MD (Downtown)	3 miles
BWI Airport	8 miles
Interstate 95	2 miles
MD 295	4 miles
Interstate 695	3 miles
Washington, D.C.	37 miles

About St. John Properties

St. John Properties, Inc. is a full-service real estate company headquartered in Baltimore, Maryland. The company owns, manages and has developed more than 20 million square feet of commercial real estate, including office, flex/R&D, warehouse, retail and residential space.



2560 Lord Baltimore Drive
Baltimore, MD 21244

410.788.0100 | SJPI.COM

MD | CO | LA | NV | PA | UT | VA | WI

**For additional leasing information
or to schedule a tour, contact:**

Claire Cobert

Leasing Representative

410.369.1274 | ccobert@sjpi.com

Sean Doordan

Senior VP, Leasing & Acquisitions

410.369.1211 | sdoordan@sjpi.com

Connect with us @stjohnprop    

