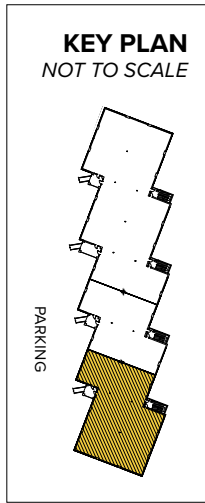
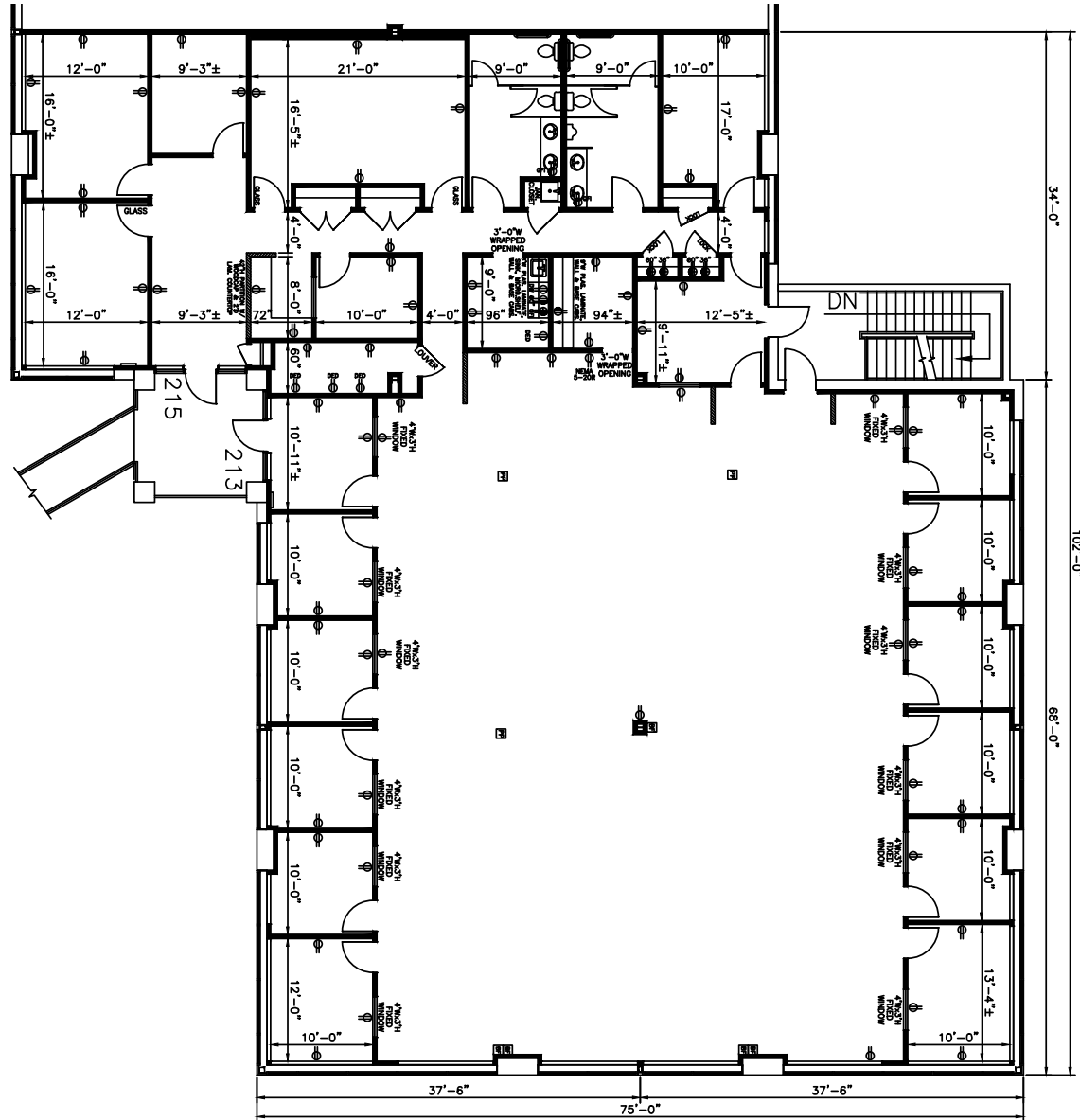


**Total SF Available:**  
7,650 SF



PARKING



Note: This space plan is subject to existing field conditions. This drawing is proprietary and the exclusive property of St. John Properties, Inc. Any duplications, distribution, or other unauthorized use is strictly prohibited.

## About Quarterfield Center

Quarterfield Center is an 18-acre business community located near the intersection of MD Route 174 (Quarterfield Road) and Interstate 97.

The business park is comprised of five office buildings and one retail building, totaling approximately 181,440 square feet of space, and provides Quarterfield Center a campus-like business environment. Two of the buildings have been custom-designed to suit medical/ office requirements.

Tenant sizes from 1,005 square feet to 61,200 square feet of space offer businesses straight-forward, economical and high-utility space in a covenant-protected, well-maintained atmosphere. Free, generous parking is available adjacent to the buildings.

*For more information on Quarterfield Center, visit: [sjpi.com/quarterfieldcenter](http://sjpi.com/quarterfieldcenter)*



## Inline Retail Space

### Inline Retail Buildings

801 Landmark Drive	7,200 SF
--------------------	----------

### Retail Tenants

Suite A	Subway	1,467 SF
Suite B	Soleil Pharmacy	913 SF
Suite C	VIP Nail Salon	1,220 SF
Suites D-E	Squisito	2,132 SF
Suite F	Edible Arrangements	1,467 SF

*Pictured Below: Single-story office building;  
Pictured Right: 801 Landmark drive, retail building*



## Single-Story Office Space

802 Landmark Drive	22,020 SF
804 Landmark Drive	18,000 SF
806 Landmark Drive	22,020 SF
<b>Suite Sizes</b>	1,005 up to 22,020 SF
<b>Ceiling Height</b>	9 ft. clear minimum
<b>Offices</b>	Built to suit
<b>Parking</b>	5 spaces per 1,000 SF
<b>HVAC</b>	Gas
<b>Roof</b>	EPDM rubber
<b>Exterior Walls</b>	Brick on block
<b>Zoning</b>	C-2



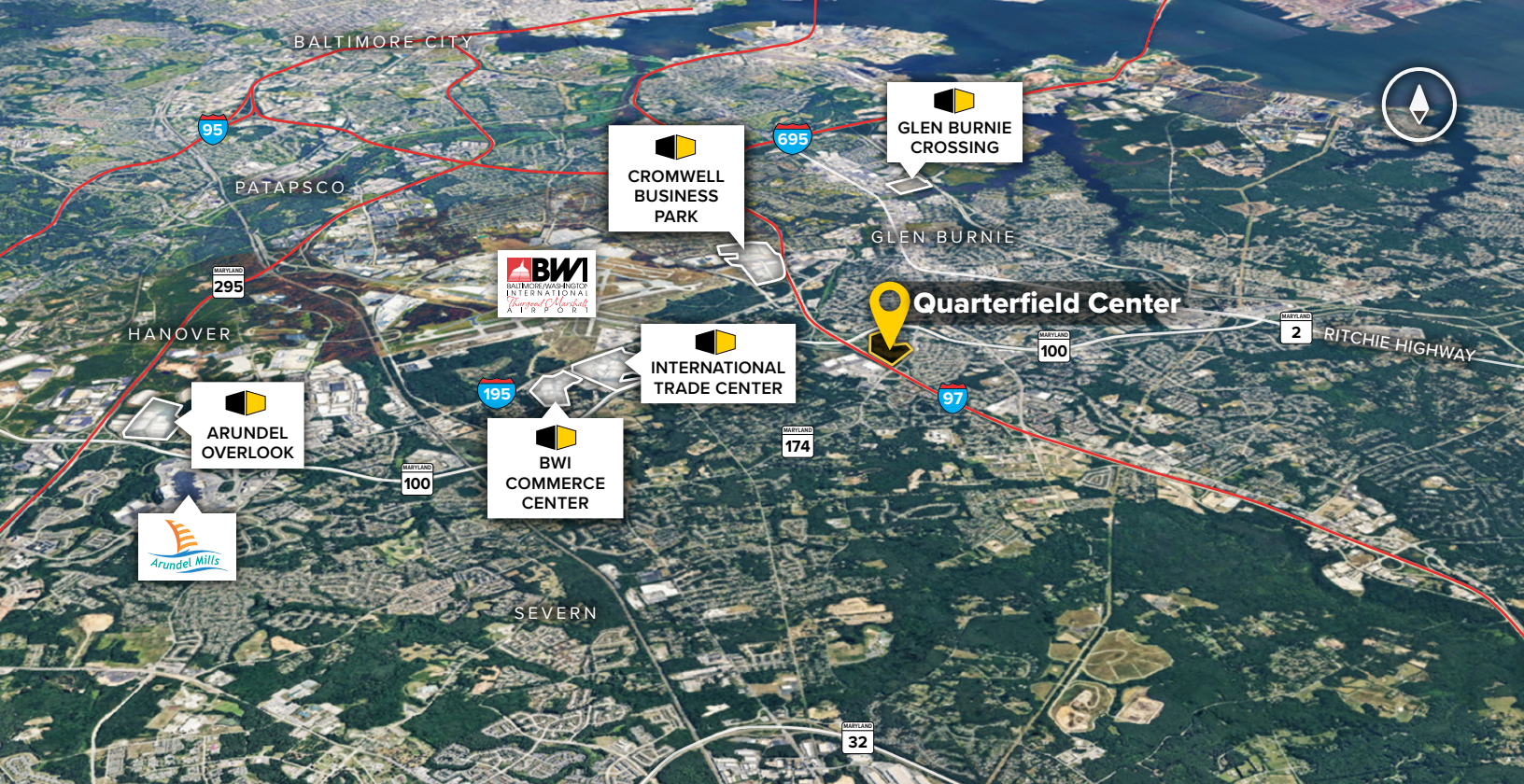
## Two-Story Office Space

### Two-Story Office Buildings

808 Landmark Drive	61,200 SF
810 Landmark Drive	51,000 SF

### Two-Story Office Specifications

<b>Suite Sizes</b>	1,275 up to 61,200 SF
<b>Ceiling Height</b>	9 ft. clear minimum
<b>Offices</b>	Built to suit
<b>Parking</b>	5 spaces per 1,000 SF
<b>Zoning</b>	C-2



**Distances to:**

- Annapolis, MD (Downtown) ..... 16 miles
- Baltimore, MD (Downtown) ..... 10 miles
- BWI Airport ..... 4 miles
- Interstate 95 ..... 8 miles
- Interstate 495 (Capital Beltway) ..... 20 miles
- Interstate 695 (Baltimore Beltway) ..... 4 miles
- MD 295 ..... 5 miles
- MD Route 100 ..... 0.25 mile
- Washington, D.C. (Downtown) ..... 30 miles

**For additional leasing information or to schedule a tour, contact:**

**Stephanie Caronna**  
*Leasing Representative*  
 410.369.1235 | scaronna@sjpi.com

**Sean Doordan**  
*Senior VP, Leasing & Acquisitions*  
 410.369.1211 | sdoordan@sjpi.com

**About St. John Properties**

St. John Properties, Inc. is a full-service real estate company headquartered in Baltimore, Maryland. The company owns, manages and has developed more than 20 million square feet of commercial real estate, including office, flex/R&D, warehouse, retail and residential space.



2560 Lord Baltimore Drive  
 Baltimore, MD 21244

**410.788.0100 | SJPI.COM**

MD | CO | LA | NV | PA | UT | VA | WI

Connect with us @stjohnprop    



*This information contained in this publication has been obtained from sources believed to be reliable. St. John Properties makes no guarantee, warranty or representation about this information. Any projections, opinions, assumptions or estimates used here are for example only and do not represent the current or future performance of the property. Interested parties should conduct an independent investigation to determine whether the property suits their needs. REV 07/20*