



410.788.0100 | SJPI.COM

Maple Lawn | Multi-Story Office

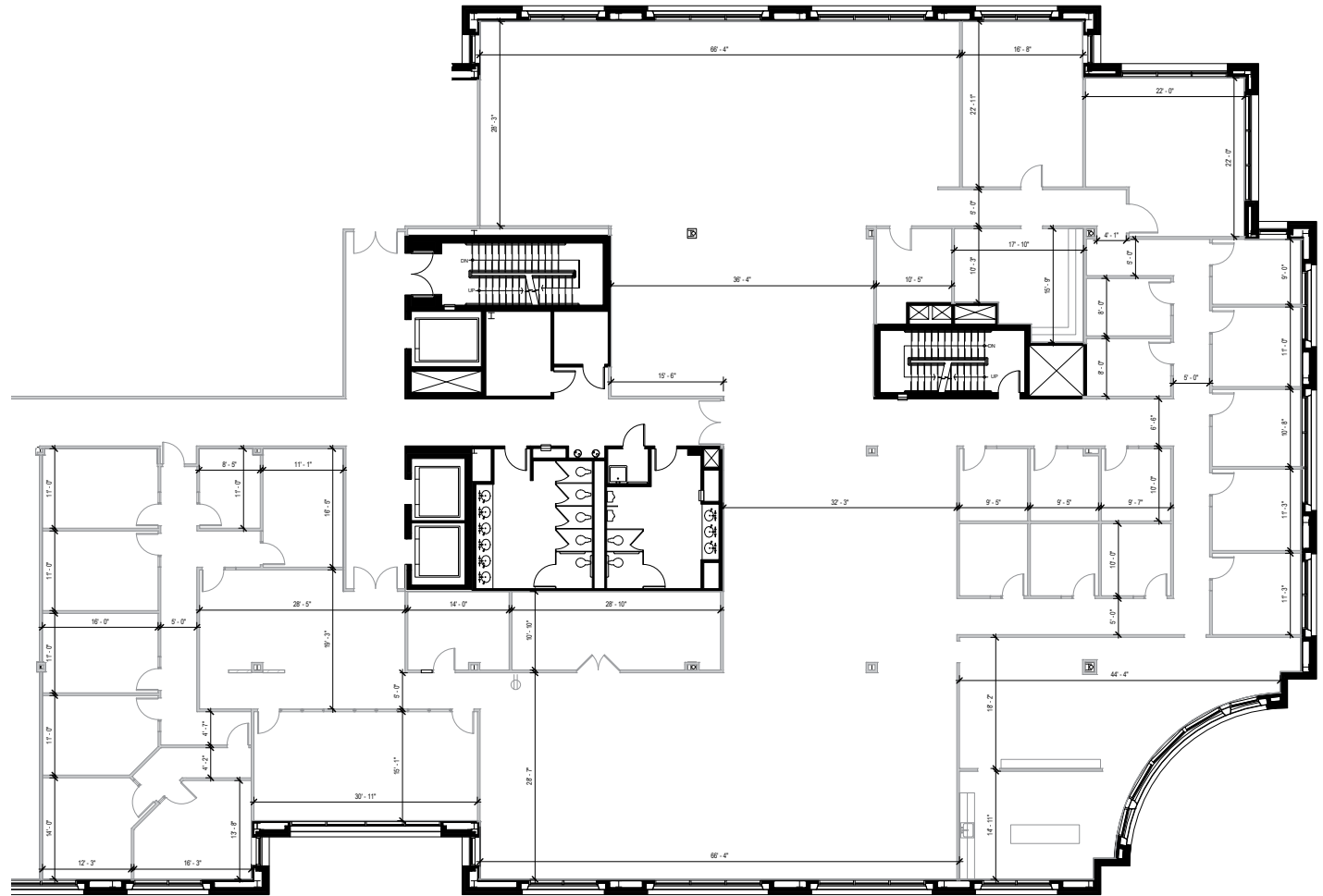
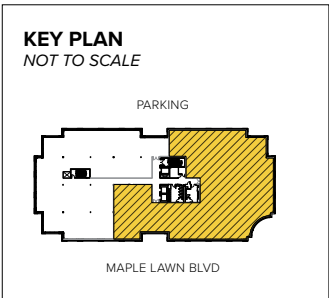
8161 Maple Lawn Boulevard | Fulton, MD 20759
Suite 200 | Second Floor



Total SF Available:
15,559 SF

Class 'A' office space with direct lobby entrance, great glass line

Take a Virtual Tour



Note: This space plan is subject to existing field conditions. This drawing is proprietary and the exclusive property of St. John Properties, Inc. Any duplications, distribution, or other unauthorized use is strictly prohibited.

8161 Maple Lawn Boulevard

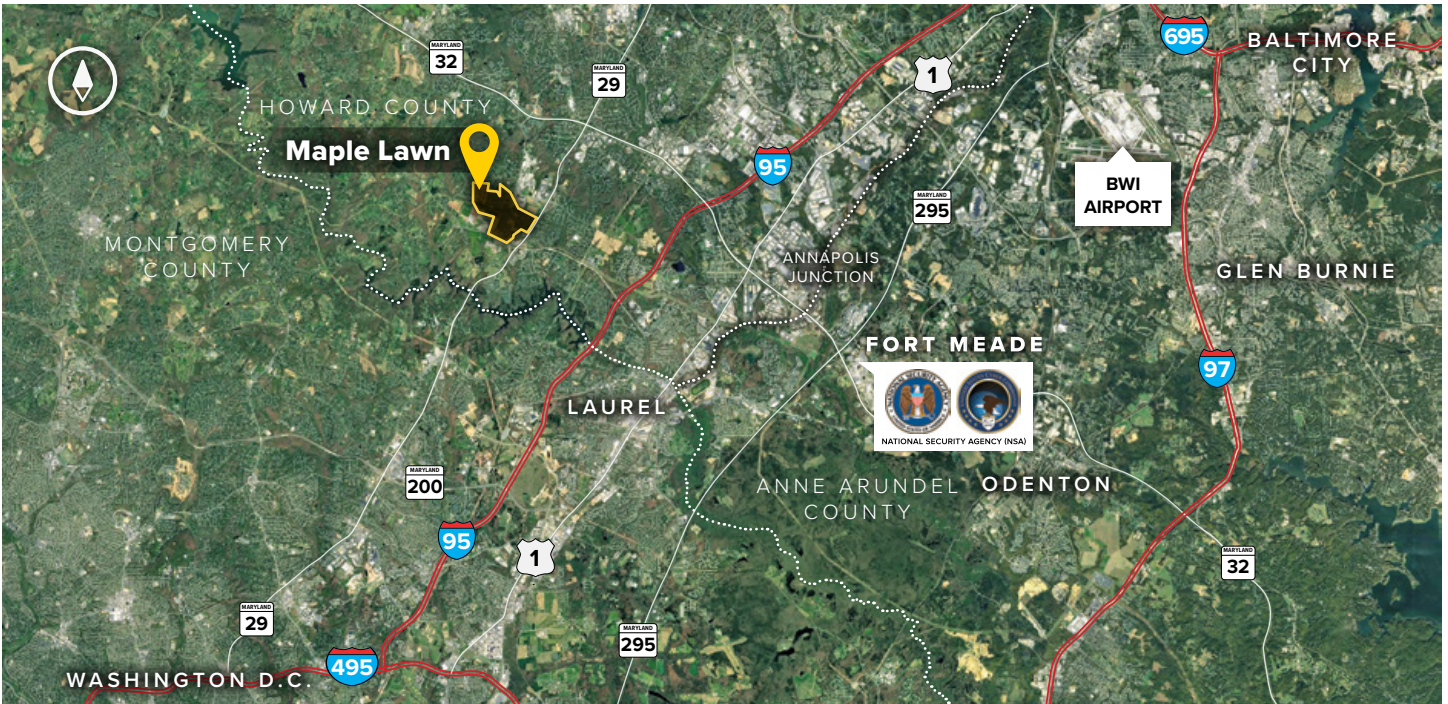
Four-Story Class 'A' Office • 110,646 Sq. Ft.

| 8161 Maple Lawn Boulevard | |
|---------------------------|----------------------------|
| Suite Sizes | 2,500 up to 110,646 SF |
| Office | Build to suit |
| Parking | 4 spaces per 1,000 SF |
| Elevator | Yes |
| HVAC | Gas, VAV with zone control |
| Lease Type | Full Service |

BUSINESS DISTRICT

MAPLE LAWN BLVD





Distances to:

| | |
|---|-----------|
| AMTRAK/Marc Station at BWI Airport | 20 miles |
| Annapolis, MD (Downtown) | 31 miles |
| Baltimore, MD (Downtown) | 22 miles |
| BWI Airport | 19 miles |
| Columbia, MD (Downtown) | 6 miles |
| Interstate 95 | 3 miles |
| Interstate 495 (Capital Beltway) | 10 miles |
| Interstate 695 (Baltimore Beltway) | 16 miles |
| Intercounty Connector (ICC)/MD 200 | 4.5 miles |
| JHU Applied Physics Laboratory | 1 mile |
| MD Route 29 | 1 mile |
| MD 295 (Baltimore-Washington Parkway) | 8 miles |
| MD Route 32 | 2.7 miles |
| National Institute of Health | 21 miles |
| NSA/Fort Meade | 9 miles |
| Reagan-National Airport | 32 miles |
| Washington-Dulles International Airport | 44 miles |
| Washington, D.C. (Downtown) | 28 miles |

About St. John Properties

St. John Properties, Inc. is a full-service real estate company headquartered in Baltimore, Maryland. The company owns, manages and has developed more than 21 million square feet of commercial real estate, including office, flex/R&D, warehouse, retail and residential space.

For additional leasing information or to schedule a tour, contact:

Bill Jautze
Leasing Representative
 410.369.1213 | bjautze@sjpi.com

Matt Lenihan
Vice President, Leasing
 410.369.1202 | mlenihan@sjpi.com

Master Developer:  **GREENEBAUM**
 ENTERPRISES



2560 Lord Baltimore Drive
 Baltimore, MD 21244

410.788.0100 | SJPI.COM

MD | CO | LA | NV | PA | UT | VA | WI

Connect with us @stjohnprop    



This information contained in this publication has been obtained from sources believed to be reliable. St. John Properties makes no guarantee, warranty or representation about this information. Any projections, opinions, assumptions or estimates used here are for example only and do not represent the current or future performance of the property. Interested parties should conduct an independent investigation to determine whether the property suits their needs. REV 03/21