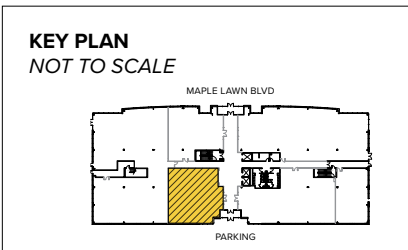


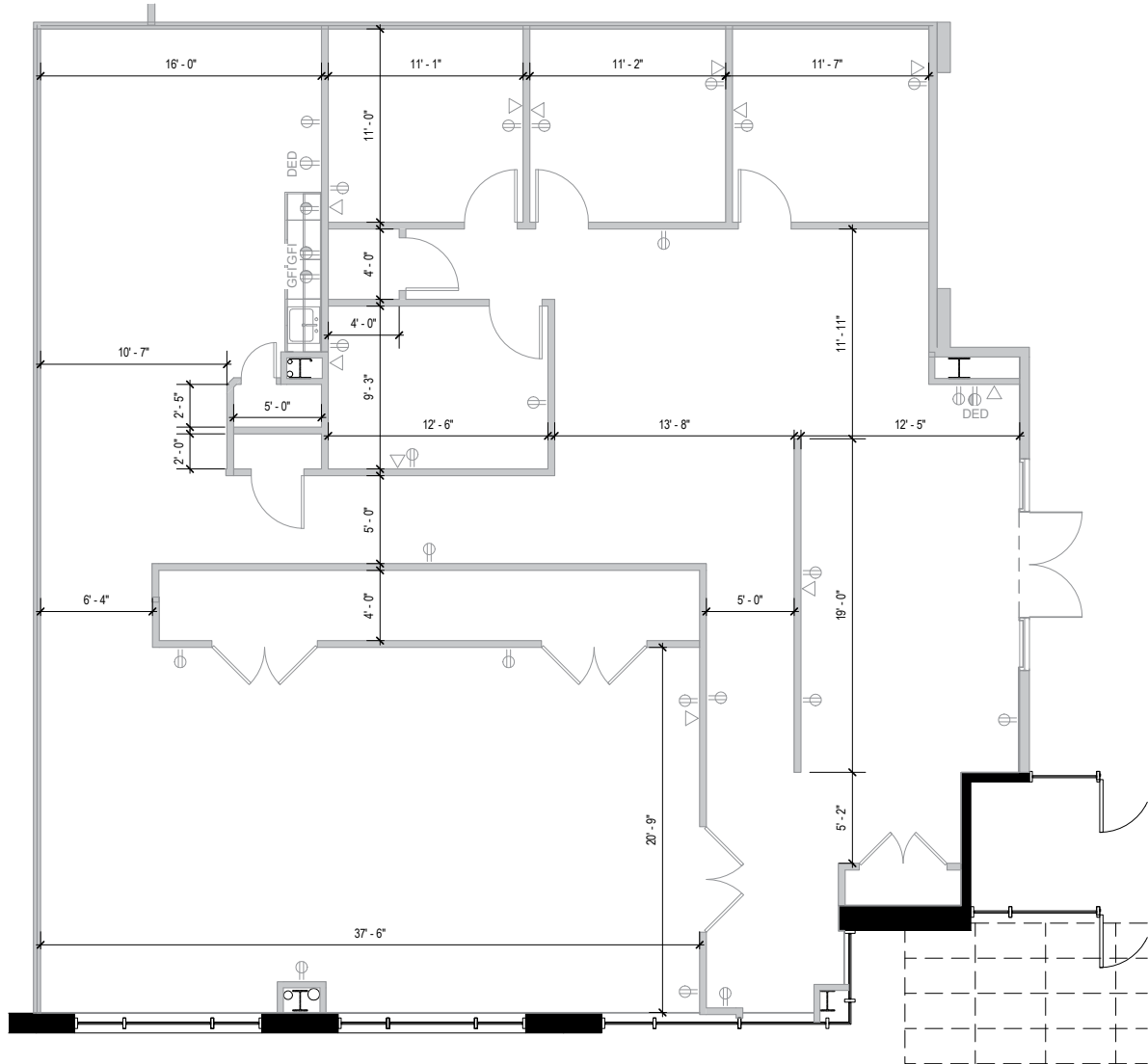


**Total SF Available:**  
2,849 SF

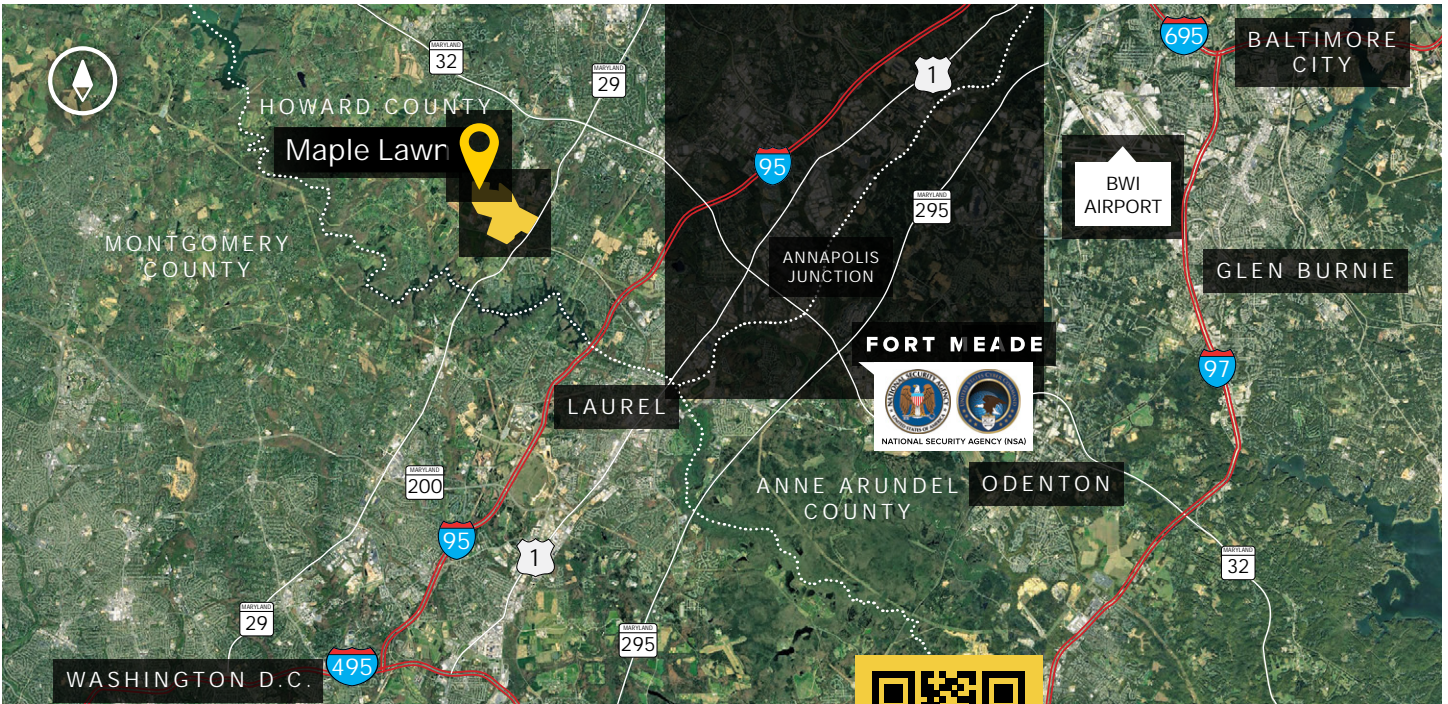
*100% office with a direct lobby entrance*



**Note:** This space plan is subject to existing field conditions. This drawing is proprietary and the exclusive property of St. John Properties, Inc. Any duplications, distribution, or other unauthorized use is strictly prohibited.







Distances to:

- AMTRAK/Marc Station at BWI Airport ..... 20 miles
- Annapolis, MD (Downtown) ..... 31 miles
- Baltimore, MD (Downtown) ..... 22 miles
- BWI Airport ..... 19 miles
- Columbia, MD (Downtown) ..... 6 miles
- Interstate 95 ..... 3 miles
- Interstate 495 (Capital Beltway) ..... 10 miles
- Interstate 695 (Baltimore Beltway) ..... 16 miles
- Intercounty Connector (ICC)/MD 200 ..... 4.5 miles
- JHU Applied Physics Laboratory ..... 1 mile



Scan with your mobile device to take a virtual tour, download our plans and more!

# Contact Us

For additional leasing information or to schedule a tour, contact:

Bill Jautze  
*Leasing Representative*  
 bjautze@sjpi.com  
 410.369.1213

Matt Lenihan  
*Vice President, Leasing*  
 mlenihan@sjpi.com  
 410.369.1202

Corporate Headquarters:  
 2560 Lord Baltimore Drive, Baltimore, MD 21244  
 410.788.0100 | SJPI.COM



### About St. John Properties

St. John Properties, Inc. is a full-service real estate company headquartered in Baltimore, Maryland. The company owns, manages and has developed more than 21 million square feet of commercial real estate, including office, ex/R&D, warehouse, retail and residential space.

Connect with us @stjohnprop



Master Developer:



*This information contained in this publication has been obtained from sources believed to be reliable. St. John Properties makes no guarantee, warranty or representation about this information. Any projections, opinions, assumptions or estimates used here are for example only and do not represent the current or future performance of the property. Interested parties should conduct an independent investigation to determine whether the property suits their needs. REV 08/21*