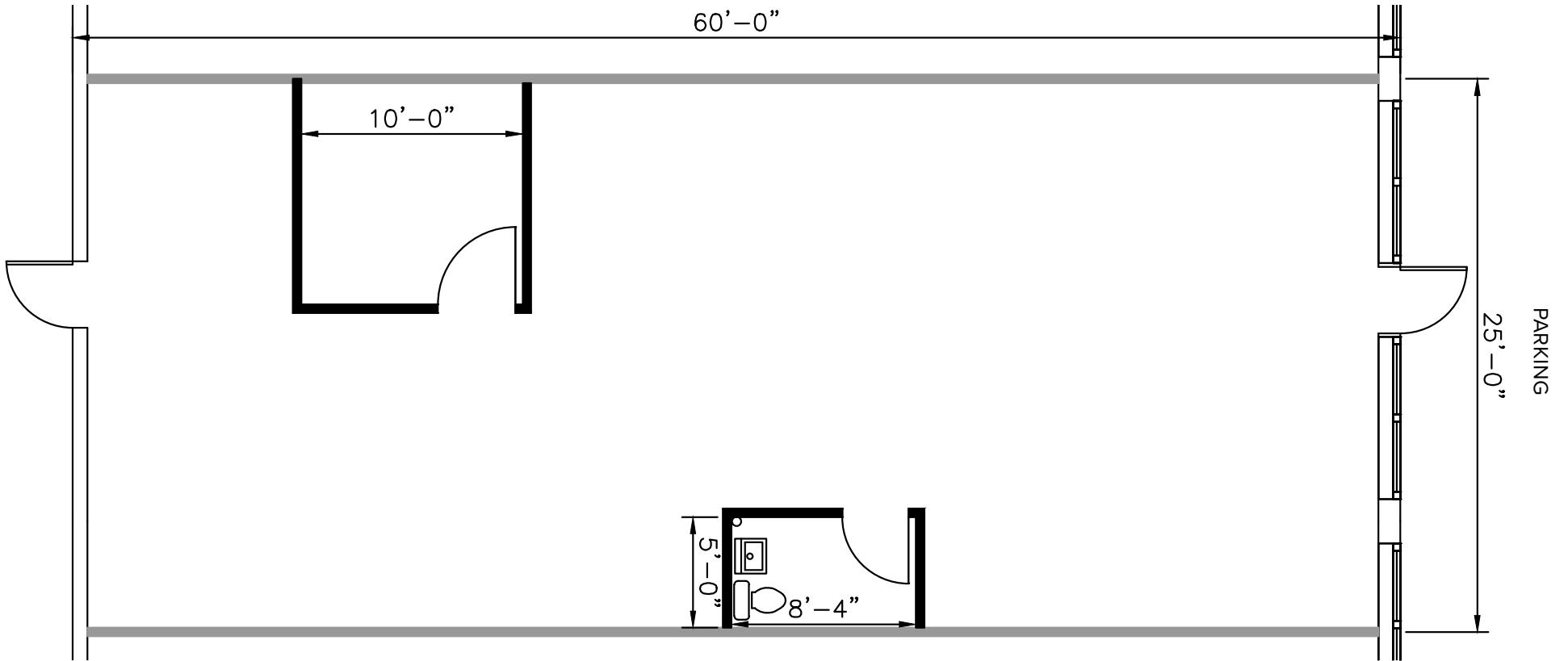
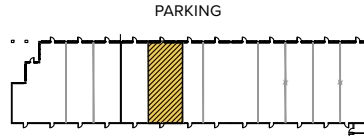


**TOTAL SF AVAILABLE:**  
1,500 SF

**KEY PLAN**  
NOT TO SCALE



## About Lisbon Center

Located in affluent western Howard County, MD, Lisbon Center is an 92,000 square foot neighborhood shopping center anchored by Food Lion and Dollar Tree. The center also features tenants including Dunkin' Donuts, Baskin Robbins, McDonald's and Subway.

Showcasing nearly 20 retail and service establishments, Lisbon Center is convenient to Carroll and Montgomery counties and is adjacent to the interchange of I-70 and MD Route 94 (Woodbine Road). This highly visible neighborhood center offers both flexibility and excellent household demographics.

### TRAFFIC COUNT (MDOT)

MD Rt 94 & MD Rt 70 - 7,921 vehicles per day

I-70 (0.5 Miles North) - 72,071 vehicles per day

### DEMOGRAPHICS

	1 Mile	3 Miles	5 Miles
Population	873	6,989	26,458
Households	287	2,340	8,936
Avg. Household Income	\$160,896	\$164,387	\$160,596



## RETAIL TENANTS

### 702 LISBON CENTER DRIVE

McDonald's 2,851 SF

### 703 LISBON CENTER DRIVE

Suite A Subway 1,416 SF

Suite C Verizon Wireless 1,308 SF

Suite D **AVAILABLE** 1,592 SF

Suite E Woodbine Wine & Spirits 1,997 SF

Suite F Dunkin' Donuts/Baskin Robbins 1,820 SF

### 704 LISBON CENTER DRIVE

Sandy Spring National Bank 2,618 SF

### 705 LISBON CENTER DRIVE

Food Lion 33,764 SF

### 708 LISBON CENTER DRIVE

Suites A-B Teitler Family Dental Care 1,916 SF

Suite C **AVAILABLE** 1,485 SF

Suites D-F High's Dairy Store 11,100 SF

### 710 LISBON CENTER DRIVE

Suite A **AVAILABLE** 1,500 SF

Suite B Pro Nails 1,200 SF

Suite C **AVAILABLE** 1,200 SF

Suite D Med.One Pharmacy 1,200 SF

Suites E-F Harvest Fried Chicken 2,400 SF

Suite G China Yee 900 SF

Suite H **AVAILABLE** 1,500 SF

Suite J MD Rural Water Association 1,200 SF

Suite K **AVAILABLE** 1,200 SF

Suites L-N Tony Locos Tavern 3,150 SF

### 712 LISBON CENTER DRIVE

Suite A **AVAILABLE** 1,359 SF

Suites B-D Dollar Tree 9,512 SF

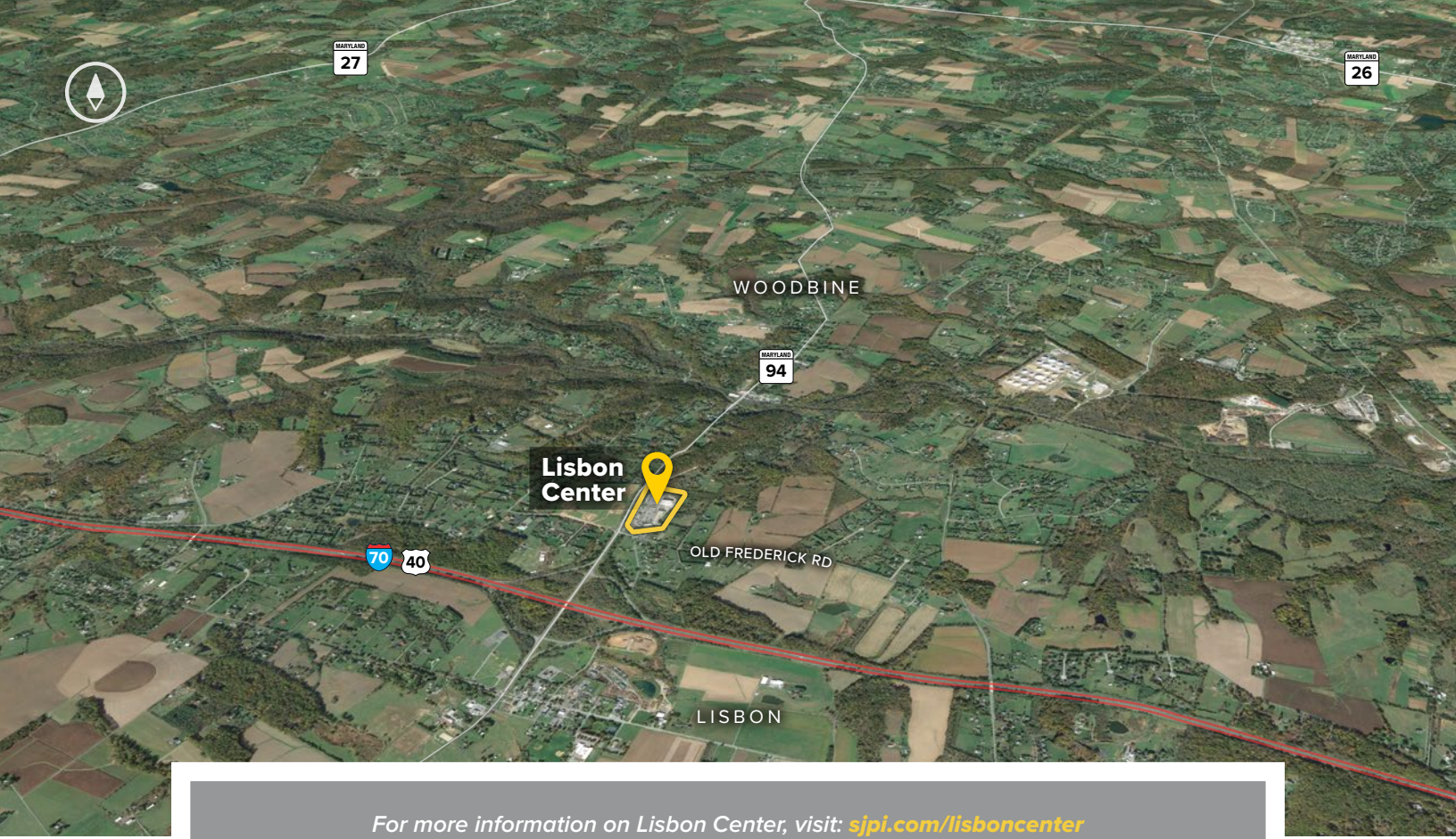
Suite E **AVAILABLE** 3,837 SF



## PAD SITES

### 706 LISBON CENTER DRIVE

**AVAILABLE** ±1 Acre Pad



For more information on Lisbon Center, visit: [sjpi.com/lisboncenter](http://sjpi.com/lisboncenter)

**Distances to:**

- Baltimore (Downtown) ..... 27 miles
- Columbia, MD ..... 17 miles
- Frederick, MD ..... 18 miles
- I-70 ..... 0.5 miles
- I-495 (Capital Beltway) ..... 25 miles
- I-695 (Baltimore Beltway) ..... 19 miles
- Washington, D.C. (Downtown) ..... 34 miles
- Westminster, MD ..... 18 miles

**About St. John Properties**

St. John Properties, Inc. is a full-service real estate company headquartered in Baltimore, Maryland. The company owns, manages and has developed more than 19 million square feet of commercial real estate, including office, flex/R&D, warehouse, retail and residential space.



2560 Lord Baltimore Drive  
 Baltimore, MD 21244  
**410.788.0100 | SJPI.COM**  
 MD | CO | LA | NV | PA | UT | VA | WI

Connect with us @stjohnprop    

**For additional leasing information or to schedule a tour, contact:**

**Eric Llewellyn**  
*Retail Leasing Representative*  
 443.464.1308 | [ellewellyn@sjpi.com](mailto:ellewellyn@sjpi.com)

**Bill Holzman**  
*Vice President, Retail Leasing*  
 410.369.1240 | [bholzman@sjpi.com](mailto:bholzman@sjpi.com)



This information contained in this publication has been obtained from sources believed to be reliable. St. John Properties makes no guarantee, warranty or representation about this information. Any projections, opinions, assumptions or estimates used here are for example only and do not represent the current or future performance of the property. Interested parties should conduct an independent investigation to determine whether the property suits their needs. REV 04/19