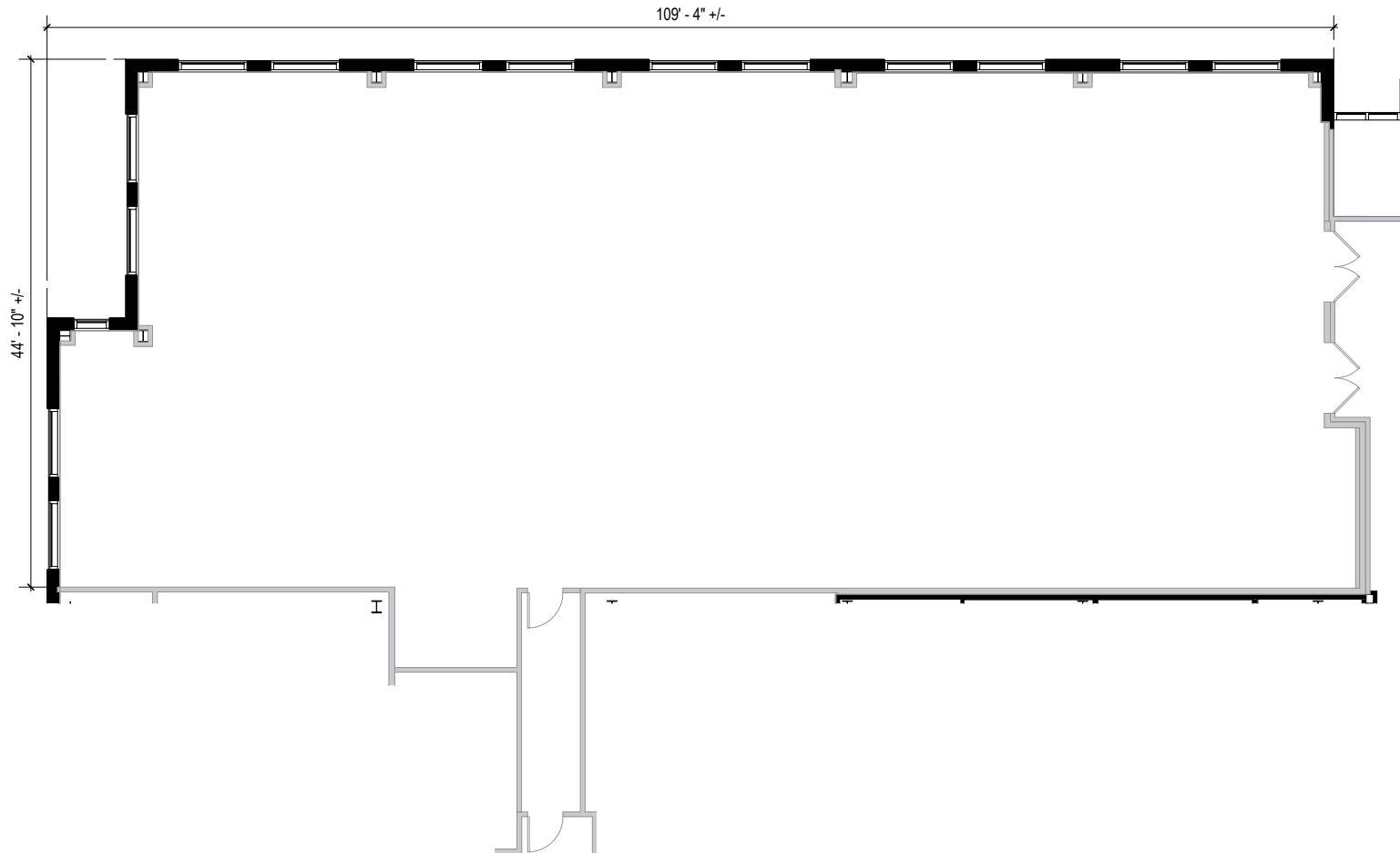


**THE GATE**

6260 Guardian Gateway | Aberdeen Proving Ground, MD 21005  
Suite 140

**TOTAL SF AVAILABLE:**  
5,531 SF

**KEY PLAN**  
NOT TO SCALE





- Seven three-story, Class 'A' office buildings
- Abundant free surface parking
- Sleek and modern Class 'A' lobbies
- Glass and brick exteriors constructed to Anti-Terrorism-Force-Protection (ATFP) Standards
- Virtually column-free construction floor-plates



**Three-Story Office Space**

**Three-Story Office Building**

|                       |           |
|-----------------------|-----------|
| 6190 Guardian Gateway | 75,000 SF |
| 6200 Guardian Gateway | 75,000 SF |
| 6210 Guardian Gateway | 75,000 SF |
| 6260 Guardian Gateway | 74,321 SF |
| 6280 Guardian Gateway | 74,334 SF |
| Three-Story Office    | FUTURE    |
| Three-Story Office    | FUTURE    |

**Multi-Story Office Specifications**

|                |                       |
|----------------|-----------------------|
| LEED           | Silver   Core & shell |
| Suite Sizes    | 1,252 up to 75,000 SF |
| Ceiling Height | 10 ft. clear minimum  |
| Offices        | Built to suit         |
| Exterior       | ATFP                  |
| Parking        | 5 spaces per 1,000 SF |
| Elevator       | Yes                   |





2560 Lord Baltimore Drive  
Baltimore, MD 21244

410.788.0100 | SJPI.COM

MD | CO | LA | NV | PA | UT | VA | WI

Connect with us @stjohnprop



**For additional leasing information  
or to schedule a tour, contact:**

**Matt Lenihan**

*Vice President, Leasing*

410.369.1202 | mlenihan@sjpi.com

**Sean Doordan**

*Senior VP, Leasing & Acquisitions*

410.369.1211 | sdoordan@sjpi.com

This information contained in this publication has been obtained from sources believed to be reliable. St. John Properties makes no guarantee, warranty or representation about this information. Any projections, opinions, assumptions or estimates used here are for example only and do not represent the current or future performance of the property. Interested parties should conduct an independent investigation to determine whether the property suits their needs. REV 01/20