

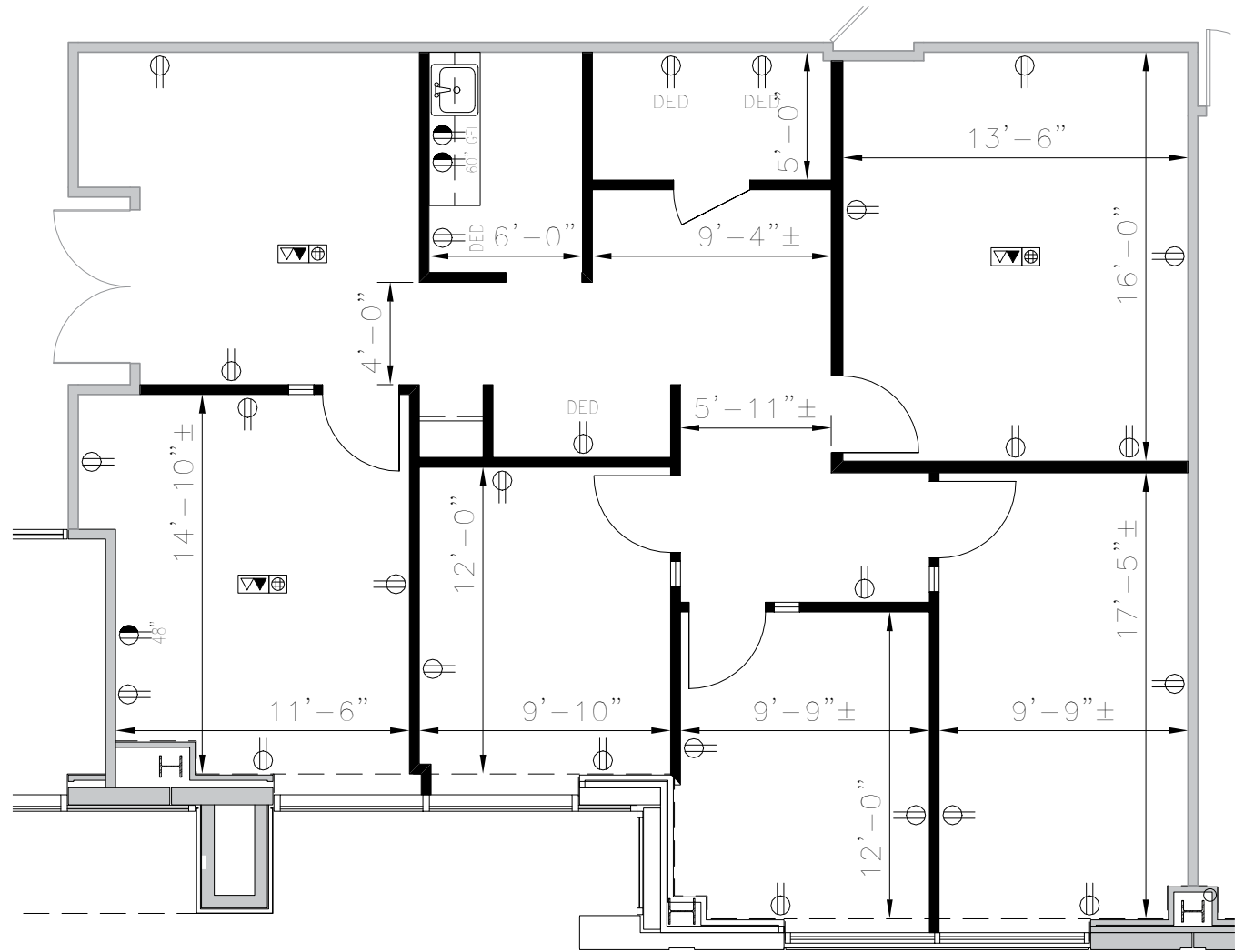
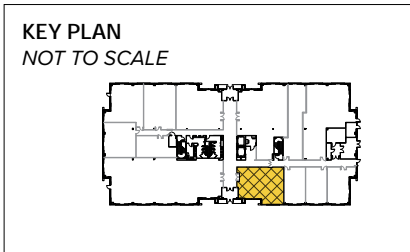
**The GATE**

6210 Guardian Gateway | Aberdeen Proving Ground, MD 21005  
Suite 175 | First Floor



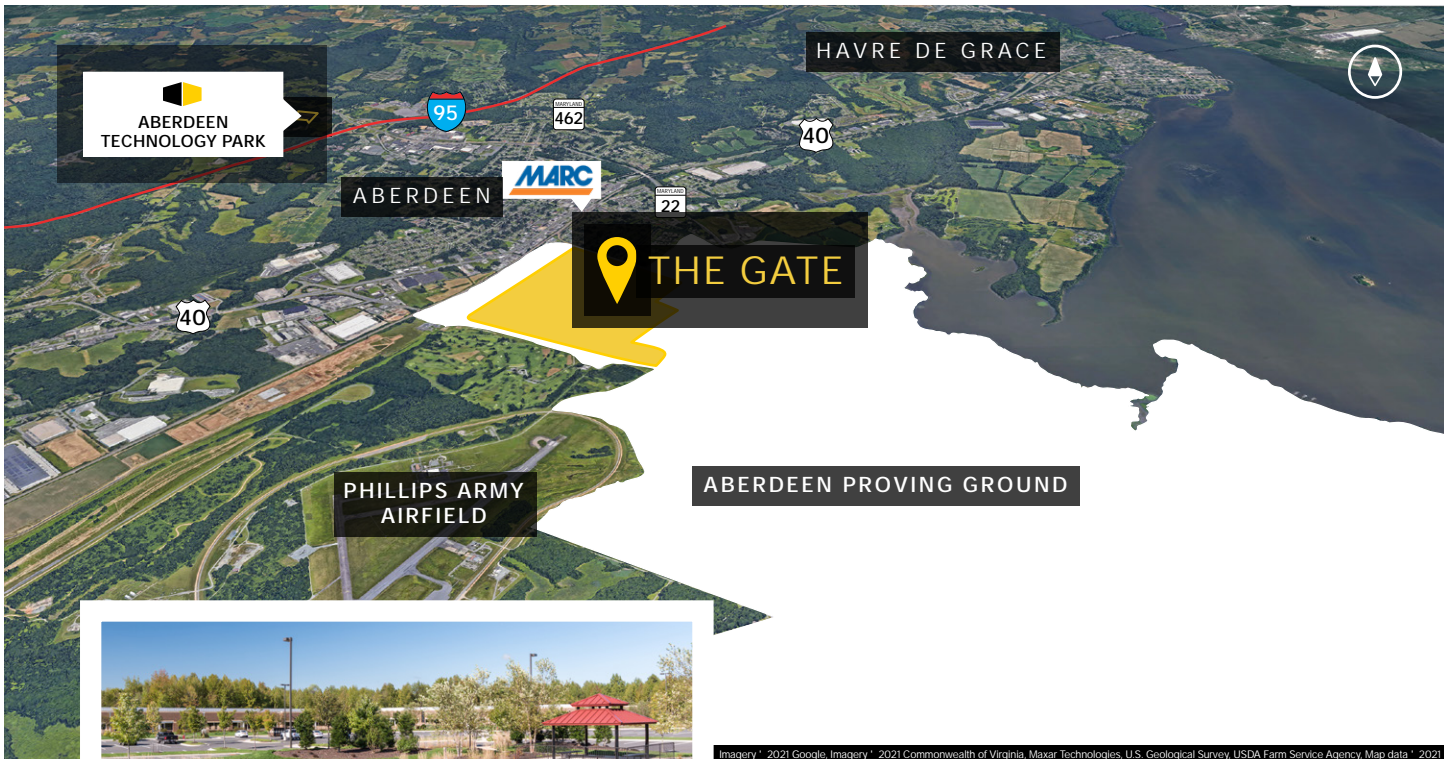
**Total SF Available:**  
1,538 SF

*First floor off-lobby entrance  
with (2) offices and (2)  
conference rooms*



*Note: This space plan is subject to existing field conditions. This drawing is proprietary and the exclusive property of St. John Properties, Inc. Any duplications, distribution, or other unauthorized use is strictly*





Imagery © 2021 Google, Imagery © 2021 Commonwealth of Virginia, Maxar Technologies, U.S. Geological Survey, USDA Farm Service Agency, Map data © 2021



Scan with your mobile device to take a virtual tour, download floor plans and more!

## Contact Us

For additional leasing information or to schedule a tour, contact:

**Matt Lenihan**  
*Vice President, Leasing*  
 mlenihan@sjpi.com | 410.369.1202

**Sean Doordan**  
*Senior Vice President, Leasing & Acquisitions*  
 sdoordan@sjpi.com | 410.369.1211

**Corporate Headquarters:**  
 2560 Lord Baltimore Drive, Baltimore, MD 21244  
 410.788.0100 | SJPI.COM

**About St. John Properties**  
 St. John Properties, Inc. is a full-service commercial real estate firm headquartered in Baltimore, Maryland. The company has developed, constructed, and owns more than 21 million square feet of commercial real estate, including office, ex/R&D, warehouse, retail and residential space.

Connect with us @stjohnprop



MD CO LA NV PA UT VA WI

