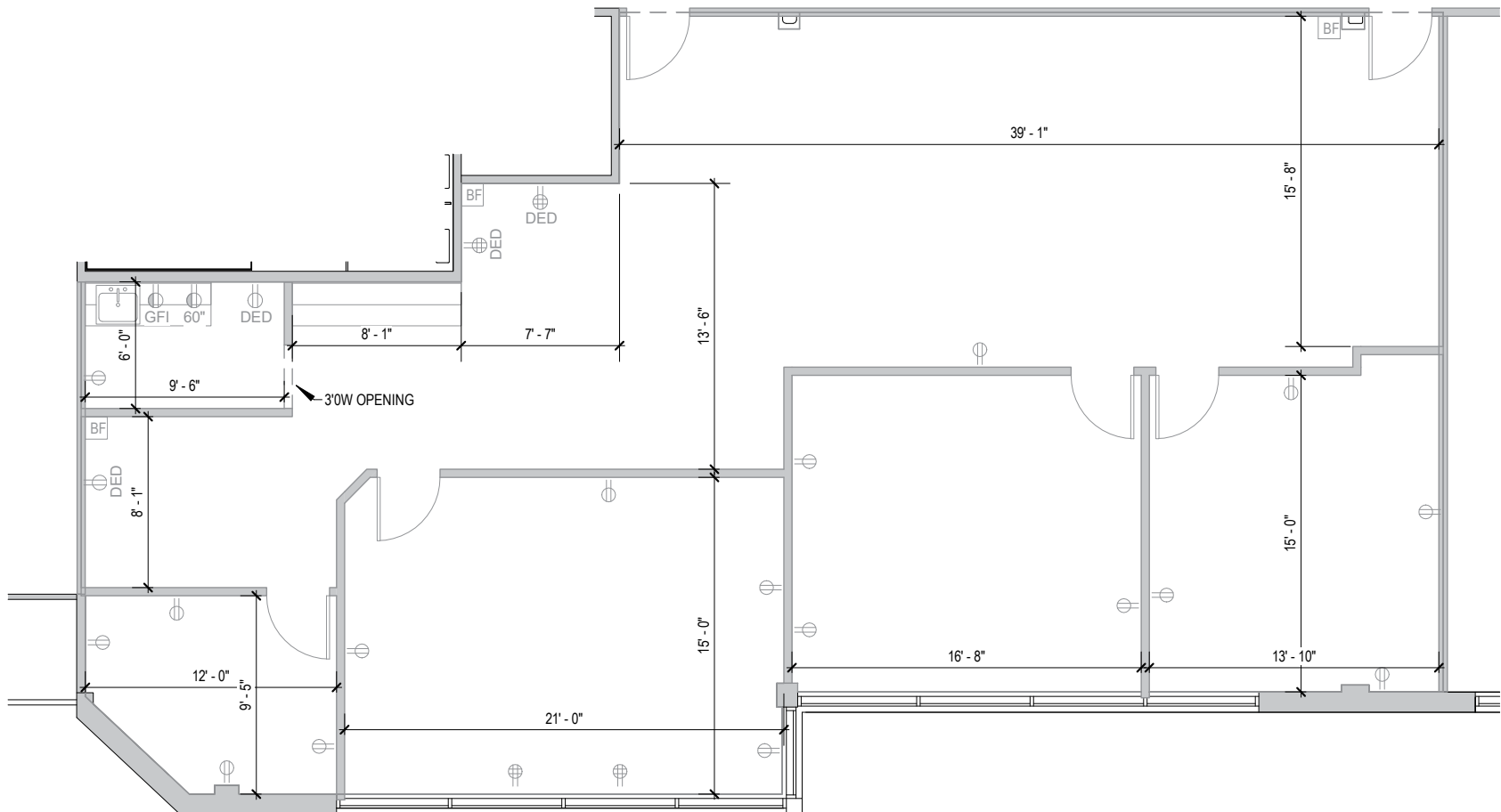
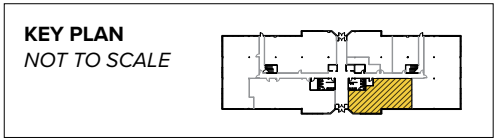


Total SF Available:
2,282 SF



About Cromwell Center

Cromwell Center is a two-building, 120,000 square foot complex located directly off Baltimore Beltway Exit 29A and Cromwell Bridge Road in Towson, Maryland. Two three-story, 60,000 square foot office buildings each has 20,000 square foot floorplates designed for maximum flexibility.

The project site features a beautiful wooded setting with mature landscaping, conference room, on site gym, as well as local business amenities, including a hotel within walking distance.

*For more information on
Cromwell Center, visit:
sjpi.com/cromwellcenter*



Multi-Story Office Space

Three-Story Office Buildings

809 Gleneagles Court 60,000 SF

810 Gleneagles Court 60,000 SF

Three-Story Office Specifications

Suite Sizes 1,000 up to 60,000 SF

Ceiling Height 8.5 ft. clear minimum

Offices Built to suit

Elevator Yes

Parking 5 spaces per 1,000 SF

HVAC Gas, VAV with zone control

Zoning ML-IM





Distances to:

Baltimore, MD (Downtown)	9 miles
BWI Airport	19 miles
Interstate 83	4.4 miles
Interstate 95	6 miles
Towson, MD	1.5 miles
Owings Mills, MD	12 miles
White Marsh, MD	8 miles

About St. John Properties

St. John Properties, Inc. is a full-service real estate company headquartered in Baltimore, Maryland. The company owns, manages and has developed nearly 21 million square feet of commercial real estate, including office, flex/R&D, warehouse, retail and residential space.

For additional leasing information or to schedule a tour, contact:

Matt Lenihan
Vice President, Leasing
 410.369.1202 | mlenihan@sjpi.com

Sean Doordan
Senior VP, Leasing & Acquisitions
 410.369.1211 | sdoordan@sjpi.com



2560 Lord Baltimore Drive
 Baltimore, MD 21244

410.788.0100 | SJPI.COM

MD | CO | LA | NV | PA | UT | VA | WI

Connect with us @stjohnprop



This information contained in this publication has been obtained from sources believed to be reliable. St. John Properties makes no guarantee, warranty or representation about this information. Any projections, opinions, assumptions or estimates used here are for example only and do not represent the current or future performance of the property. Interested parties should conduct an independent investigation to determine whether the property suits their needs. REV 03/21